



Photos courtesy of the Portage Lake Association. Photographer: David Maylen,.

# Portage Lake

## Lake Management Plan 2023

Prepared for Onekama Township and the Invasive Species Committee

Submitted By:  
BreAnne Grabill, Environmental Scientist  
Senior Regional Manager  
February 20, 2024



**PLM**  
LAKE & LAND  
MANAGEMENT CORP

## TABLE OF CONTENTS

<b>Executive Summary</b>	<b>5</b>
<b>Introduction</b>	<b>6</b>
Characteristics of the Lake	6
Management Goals for Portage Lake	6
<b>Lake Management Overview including various Best Management Practices</b>	<b>9</b>
Integrated Pest Management (IPM)	9
Prevention	9
Monitoring	9
Early Detection Rapid Response (EDRR)	10
Wake Boats	11
Fishery	11
Submersed Nonnative Plant Management	12
Emergent Nonnative Plant Management	12
Native Plant Management	13
Algae Management	13
Natural Shoreline/Nutrient Loading Abatement	14
Restoration	15
<b>Lake Management Approaches</b>	<b>16</b>
Aeration	16
Bacteria augmentation	17
Benthic barriers	17
Biological control	17
Chemical control	18
Diver assisted suction harvesting (DASH)	19
EutroSORB – Phosphorus Filtration Technology	19
Mechanical harvesting	19
Swimmers itch	19
<b>Lake Management Activities Conducted in 2023</b>	<b>20</b>
Water Quality	20
Weather Challenges of 203	20
Aquatic Plant Control	21
Map 1: Portage Lake June 2023 Treatment Map	22
Map 2: Portage Lake 2023 Emergent Treatment Map	22
Map 3: Private nonnative emergent treatment areas	23
Map 4: Portage Lake 2009 EWM Infestation Treatment Map	23
Table 1: Submersed Plant Treatment Quantities 2023	24
Table 2: Terrestrial Treatment Summary 2023-2009	24
Graph 1: Annual Management Acres	25
Graph 2: Annual Management Cost	25
Planning/Evaluation	26
Table 3: Plant Species Found in Portage Lake –2023	26
Map 6: Portage Lake AVAS/Grid Combination Map (updated in 2022)	27

Map 7: Portage Lake 2023 Plant Density Map	28
Graph 3: Native Plant Species (Fall AVAS Surveys)	28
Graph 4: EWM, SSW & Native Plant Cumulative Cover (Fall Data)	29
<b>Current Conditions in the Lake</b>	<b>29</b>
Aquatic Vegetation	29
Water Quality Monitoring	30
Map 8: Portage Lake Water Quality Testing Locations	30
Temperature and Dissolved Oxygen Profiles	31
pH	32
Total Alkalinity	32
Conductivity and Total Dissolved Solids	32
Oxidative Reduction Potential (ORP)	32
Turbidity	33
Secchi Disk Depth	33
Graph 5: Spring Transparency (Secchi Disk) – Deep Hole Basins 1, 2 (1993-2023)	33
Graph 6: Fall Transparency (Secchi Disk) – Deep Hole Basins 1, 2 (1993-2023)	34
Total Phosphorus	34
Graph 7: Total Phosphorus – Deep Hole Basins 1, 2 (2009-2023)	35
Graph 8: Total Phosphorus & Dissolved Oxygen – Deep Hole Basin 1, (2009-2023)	36
Graph 9: Total Phosphorus & Dissolved Oxygen – Deep Hole Basin 2, (2009-2023)	36
Graph 10: Total Phosphorus Spring – Tributaries 2009-2023	37
Graph 11: Total Phosphorus Fall – Tributaries 2009-2023	37
Graph 12: Total Phosphorus – Tributaries 2013-2023	38
Graph 13: Total Phosphorus – Tributaries May 2023	38
Graph 14: Total Phosphorus – Tributaries End of Summer 2023	39
Graph 15: Total Phosphorus – Storm Drains May 2023	39
Graph 16: Total Phosphorus – Storm Drains May 2013 - 2023	40
Total Kjeldahl Nitrogen (TKN)	40
Graph 17: TKN – Portage Lake Basins 1, 2 (2009-2023)	41
Graph 18: TKN & Dissolved Oxygen– Portage Lake Basin 1 (2009-2019)	41
Graph 19: TKN & Dissolved Oxygen– Portage Lake Basin, 2 (2009-2023)	42
Nitrates	42
Graph 20: Nitrates– Portage Lake Tributaries	43
Graph 21: Portage Lake Nitrates Basin 1 (2014-2023)	43
Graph 22: Portage Lake Nitrates Basin 2 (2014-2023)	44
Ammonia	44
Graph 23: Ammonia– Portage Lake Basin 1 (2014-2023)	45
Graph 24: Ammonia– Portage Lake Basin 2 (2014-2023)	45
Chlorophyll	46
Graph 25: Chlorophyll a– Portage Lake Deep Basins	46
Algae and Zooplankton Composition	46
Fecal Indicator Bacteria (E. Coli)	47
Table 4: Portage Lake E.coli Testing, District 10 Health Department 2023	48
Tributary Flow and Phosphorus	48
Graph 26 and 27: Tributary Flow Rates –May (top); September (bottom) 2013-2023	49
Graph 28 and 29: Tributary Flow Rates and Phosphorus (ug/L) comparisons – May 2023 (top) – September 2023 (bottom)	50

Additional Tributary/Upstream testing	50
Map 9: Portage Lake Stream #9 sampling locations	51
Evaluation of Trophic Status	51
Table 5: 2023 Trophic State Index (TSI) Values	52
2023 Water Quality Concerns/Recommendations	52
<b>Management Recommendations for 2024</b>	<b>52</b>
Submersed Aquatic Plants	52
Emergent Vegetation Management	53
Monitoring	53
Proposed Budget	53
Table 6: Proposed 2024 Budget Portage Lake	53
The Recommended Management Schedule for 2024:	53
<b>Addendum 1 Product Explanation guide</b>	<b>54</b>
Aquathol K	54
Flumioxazin	54
ProcellaCOR	54
Navigate (2,4-d)	54
Renovate 3	54
Renovate OTF	54
SeClear G	55
Sculpin G	55
Tribune	55
<b>Addendum 2 Product Terminology</b>	<b>56</b>
<b>Addendum 3A Portage Lake Product Use Overview</b>	<b>57</b>
Table 7: Submersed Plant Control Program Product Use Overview	57
<b>Addendum 3B Portage Lake Treatment Cost Overview</b>	<b>58</b>
Table 8: Portage Lake Treatment Cost Overview	58
<b>Addendum 4 Portage Lake Water Quality Data</b>	<b>61</b>
Table 9: Tributary Water Quality Portage Lake –2023	61
Table 9: Storm Drain Sampling Portage Lake –2023	61
Table 10: Shoreline Sampling Portage Lake –2023	61
Table 11: Deep Hole Basin 1 Portage Lake –2023	62
Table 12: Deep Hole Basin 2 Portage Lake –2023	63

# *Lake Management Plan*

## **Executive Summary**

In 2008, a group of concerned citizens began working on Phragmites control, to prevent this invasive species from continuing to spread throughout the Portage Lake Watershed. Throughout the process of learning Best Management Practices (BMPs) and determining priority areas of Phragmites control on Portage Lake, other nonnative, invasive plants were identified. A formal survey was completed on Portage Lake and initiation began to manage these environmentally damaging species in 2009. Although some of the species identified as a concern had been present for quite some time, others were newer infestations. In an attempt to manage all high risk invasive species, a lake management plan was set in place, with goals of identifying and reducing the presence of aquatic invasive species (AIS) throughout Portage Lake as well as the Portage Lake watershed. The plan included controlling high risk species, including those that had been left unmanaged and were continuing to spread in Portage Lake and negatively impact native plants, as well as tracking plant trends, monitoring water quality and ultimately protecting Portage Lake into the future. The following report breaks down the specifics of the previous, current and future management needs.

As part of this integrated program, numerous best management practices have been utilized in this management plan, including biological control methods for Purple loosestrife. Annual monitoring is key to the success of the program and regular surveys found a new nonnative infestation in 2020 and 2022. European frog bit (EFB) was found on the east shoreline of the lake, mixed in with cattails. EFB is a highly concerned floating leaf plant and as part of the early detection rapid response program underway on Portage Lake was addressed quickly and none was found post management. Starry Stonewort (SSW) was positively identified in Portage Lake in 2020 through early detection and rapid response, the negative impacts of this plant have been kept minimal, thus far. In 2023, just over 6 acres of nonnative, submersed aquatic plants were managed in total, ~0.3% of Portage Lake, while at no time has more than nine percent of the lake received herbicide management. This program has successfully removed and managed the exotic infestation population, while preserving much of the lake from exotic plant disturbance. Further, with over 92% of the lake not receiving any herbicide treatment, the native plant community has been left as natural as a lake will allow with adjusting water levels/depths, a constant changing environment and exotic species introductions. In addition, less than 1 acre of emergent, nonnative plants were targeted for control in 2023, showing long term success from the original infestation. As part of an integrated approach, hand pulling also occurred, in an effort to control European frogbit.

Extensive vegetation surveys and water quality testing is included in the management program annually, to allow a checks and balance over the program and ensure the long-term protection of the lake. The abundance of healthy native plants in Portage Lake increases the long-term stability of the lake, which has been continually found in the extensive surveys performed on Portage Lake. While some water quality parameters have maintained themselves with little change over the years, other parameters have shown some fluctuations. One of the most important parameters to test is Total Phosphorus (TP). Generally speaking, a downward trend in TP has been found in many years, with a few random elevations. However, trendline data shows consistent low levels, an excellent sign. Additionally, internal loading has only shown small peaks or elevated levels, meaning that overall lake trends are positive. The Tributaries and Storm Drains around Portage Lake continue to show elevated nutrient levels and prove to be a point source for bringing excess nutrients into the lake. In 2021 and 2023, sampling showed the smallest TP input in recent years, but in 2022, results were similar to historic high levels, showing a source of concern. This information is vital in determining the areas within Portage Lake that need to be focused on to reduce nutrient loading to help reduce the productivity in Portage Lake. Although seasonal fluctuations can occur, long term trend data has to be evaluated for overall health. The ability of Portage Lake to produce algae and aquatic plants is directly related to the overall health (nutrient base) of Portage Lake and its surrounding watershed. While the main goal of the management program is to

protect the long-term ecological health of the lake, it is also important to protect the recreational, aesthetical and financial aspects of the lake as well. All of these factors play into the management efforts on Portage Lake, which need to be continued into next season.

## Introduction

This management plan documents management activities during 2023, examines current conditions in the lake, and provides management recommendations for 2024. The plan will detail an integrated approach to lake management including but not limited to exotic weed control, water quality monitoring and aquatic vegetation surveying.

## Characteristics of the Lake

Portage Lake is a 2110-acre lake located in Onekama Township and the Village of Onekama, Manistee County, Michigan. Public access to the lake is provided by multiple access sties. A large portion of the shoreline has been developed and of that, a majority for single-family year-round homes. A formal lake-use survey was not included in this study, but observations made while working on the lake indicate that



the lake is used for fishing, boating (power & non-power), and swimming. Portage Lake makes up 13.6% of the overall Portage Lake Watershed, which drains into Lake Michigan. Numerous other lakes and tributaries flow into Portage Lake, which has a man-made channel into Lake Michigan on the west end. Portage Lake is a natural lake with two deep holes approximately 60' deep.

A few problems necessitating management of Portage Lake are: (1) exotic and invasive species, and (2) water quality concerns. The presence of multiple exotic species has required annual management of the aquatic and terrestrial plants within and around Portage Lake.

Establishment of weedy exotic aquatic plants, including Eurasian watermilfoil and curly leaf pondweed, exacerbates problems caused by aquatic vegetation in the lake. These weedy exotic plants grow to the surface and cause substantially more interference with recreation than native plants.

## Management Goals for Portage Lake

- The primary goal of management in Portage Lake is to control and manage nonnative plants, to allow recreational use of the lake and promote a healthy fishery. The nonnative or exotic plant species, Eurasian watermilfoil, Starry stonewort, Curlyleaf pondweed, Eurupen frogbit and Phragmites, should be controlled throughout Portage Lake to the maximum extent possible. Native plants should be encouraged throughout the lake to promote an overall healthy ecosystem. Genetic testing in Portage Lake has found that the Eurasian watermilfoil is hybrid, a new genetic strand of milfoil. In reference to Portage Lake, Eurasian milfoil or EWM will be referring to both EWM and Hybrid milfoil as it all needs to be managed as a nonnative or exotic, invasive species.
- Aquatic plant management should preserve species diversity and cover of native plants sufficient to provide habitat for fish and other aquatic organisms. Native plants should be managed to encourage the growth of plants that support the Portage Lake fishery (by creating structure and habitat) provided that they do not excessively interfere with recreational uses of the lake (e.g., swimming and fishing) in high-use areas. Where they must be managed, management techniques that reduce the stature of native plants without killing them (e.g., harvesting, contact herbicides) should be used whenever possible. Specific areas should be set aside where native plants will not be managed, to



provide habitat for fish and other aquatic organisms. Muskgrass (*Chara*) should be allowed to grow throughout the lake, except in where it grows so tall as to interfere with boating and swimming.

- Water quality efforts in Portage Lake should continue to be made to reduce external loading of nutrients. Proper watershed management techniques should be applied where possible and lake residents should be encouraged to practice “lake friendly” lawn maintenance.
- Outreach/education of the Portage Lake residents should continue in an attempt to communicate lake activities and management goals. The Portage Lake website should be maintained as a way to directly relay pertinent information along with annual meetings and newsletters.
- Based on currently survey results, the following species are recommended for specific management on Portage Lake.
  - EWM, an exotic species, is an extremely aggressive submerged aquatic plant that has the abilities to form a monoculture among vegetation. EWM spreads by fragmentation (every inch of plant can sprout new growth) and has a very strong root system. EWM forms a canopy above native plants, choking out the competition. EWM also has the ability to overwinter underneath the ice, allowing it to be present throughout the winter. This gives the plant a head start in growing during the spring and chokes out native plants very quickly. EWM should be controlled as soon as it is found within a waterbody to prevent further infestation and loss of native plant diversity. NOTE: Once a native plant is lost in a lake, there is no guarantee it will return.



- The macroalgae species, Starry stonewort (SSW), should be actively controlled and managed. Starry stonewort is in the same family as Muskgrass (*Chara*) but is considered an exotic invasive species. Starry stonewort, which looks very similar to the beneficial species *Chara*, is appearing in more and more lakes. *Chara* is a highly desired plant because it is typically low growing, keeps the water clear and can slow down the invasion of exotic weed species. Starry stonewort also forms dense mats, but unlike *Chara*, it can grow from 5 to 7 feet tall. Starry stonewort can be very detrimental to a lake’s ecosystem and has the ability to kill off native plants and have a negative impact on a lake’s fisheries.
- European frog-bit, an exotic plant found in Portage Lake in 2022, is a free-floating aquatic plant native to Europe, Asia and Africa. European frog-bit was first found in SE Michigan in 1996 but has recently made its way to west



Michigan over the last 5 years and is now popping up in Northern Michigan and in numerous areas along the Lake Michigan coastline. European frog-bit can form dense mats on the surface of slow-moving waters like bayous, backwaters and wetlands. Mats can impede boat traffic and alter food and habitat for fish. Prolific growth of European frog-bit can also reduce oxygen and light in the water column. The plant is spread by plant fragments or turions (seed pods) transported on boats, trailers and recreational gear. Once established, drifting mats of vegetation spread to connected waters. Control options include chemical, mechanical and physical removal.



- The aquatic invasive terrestrial plants, Purple loosestrife and Phragmites should be controlled along the shoreline and adjacent wetlands where present. Both species are exotic and have the ability to displace beneficial native vegetation. Purple loosestrife grows 2 -4 feet tall and is a vibrant magenta color. It is very aggressive and can quickly become the dominant wetland vegetation. Phragmites (common reed) is a wetland grass that ranges in height from 6 to 15 feet tall. “Phrag” quickly becomes the dominant feature in aquatic ecosystems, aggressively invading shorelines, wetlands, and ditches. This plant creates dense “strands” - walls of weeds crowding out beneficial native wetland vegetation and indigenous waterfowl habitats. Spreading by fragmentation and an extensive root system, Phragmites ultimately out-competes native plant life for sun, water and nutrients. As Portage Lake also hosts a healthy native Phrag community, it is vital to identify each strand for proper management and promote native Phragmites, when present.



- The terrestrial invasive plant, Japanese knotweed should be controlled throughout the Portage Lake Watershed. Japanese knotweed is a large, herbaceous perennial plant native to Eastern Asia. In North America, the species has been classified as an invasive species. Japanese knotweed has hollow stems with distinct raised nodes that give it the appearance of bamboo, though it is not closely related. Reaching a maximum height of about 12' each growing season, it is typical to see much smaller plants in places where they sprout through cracks in the pavement or are repeatedly cut down. The invasive root system and strong growth can damage concrete foundations, buildings, roads, paving, retaining walls and architectural sites. It can also reduce the capacity of channels to carry water. It forms thick, dense colonies that completely crowd out any other herbaceous species. The success of the species has been partially attributed to its tolerance of a very wide range of soil types, pH and salinity. The plant is also resilient to cutting, vigorously resprouting from the roots. The most effective method of control is by herbicide application close to the flowering stage in late summer or autumn.



- Narrow-leaf cattails, another terrestrial invasive species, which can often be confused with the Common cattail, are often found growing in marches, lakeshores, ponds, ditches, etc. Similar to other invasive species, Narrow-leaf cattails often form monocultures and outcompete other native species, leading to a concern for species habitat and often affecting recreational use of the area. Narrow-leaf cattail's leaves are about ½ inch wide, roughly half the width of the native broadleaf cattail. The stem is roughly 3-6' tall. The two species also hybridize, producing a cross that can exhibit characteristics of both species, though is often taller and more aggressive than either parent species and can be more difficult to identify. Management options include mowing, digging, grazing, water level manipulation, and chemical control.





## Lake Management Overview including various Best Management Practices

### Integrated Pest Management (IPM)

IPM approaches to aquatic plant control emphasize spending more effort evaluating the problem, so that exactly the right control can be applied at just the right time to control the pest. IPM approaches minimize treatment costs and the use of chemicals. Lake Management planning



ensures the most appropriate, cost-effective treatment for your lake. Planning is an essential phase of Integrated Pest Management and includes lake vegetation surveys, water quality evaluation and a detailed, written lake management plan. Having the plan in place helps lake users know what to expect from lake management. Survey results provide a permanent record of conditions in the lake and the impact of management practices.



### Prevention

Early detection and rapid response are key to a successful program. As part of any community education and outreach program, preventing introductions is key. More often than not, nonnative aquatic plants (exotic species) were possibly introduced to Portage Lake by plant fragments carried on boats and/or boat trailers. A variety of other troublesome exotic plants and animals that have been introduced to Portage Lake are also transported this way. Preventing their inadvertent introduction to Portage Lake can significantly lower the cost of future lake management. Education can be an effective preventative measure. Newsletter articles should alert lake residents to the threat from exotic nuisance plants and animals. Warning signs should be erected at any public boat access sites, if applicable, that encourage boaters to clean boats and trailers when launching or removing watercraft from the lake.



**STOP AQUATIC  
HITCHHIKERS!™**  
Be A Good Steward.  
Clean. Drain. Dry.  
[StopAquaticHitchhikers.org](http://StopAquaticHitchhikers.org)

### Monitoring

It is important to maintain a record of lake conditions and management activities. Vegetation surveys monitor types and locations of plants in the lake, providing information that is essential to the administration of efficient, cost-effective control measures. Vegetation surveys also document the success or failure of management actions and the amount of native vegetation being maintained in the lake. Water quality monitoring can identify trends in water quality before conditions deteriorate to the point where remediation is prohibitively expensive or impossible. Records of past conditions and management activities also help to keep management consistent despite changes in the membership of the organization. Records should include (at a minimum):

- Temperature, dissolved oxygen and Secchi disk depth should be measured in the lake at both deep hole basins. Temperature and dissolved oxygen profiles should be obtained in the deep hole, so as to monitor the timing and extent of oxygen depletion in the hypolimnion (i.e., bottom water).
- Total phosphorus, nitrates, and ammonia should be measured in the surface and bottom water at least two times per season (spring and late summer) to monitor nutrient accumulation in the hypolimnion.
- Chlorophyll a sampling
- Tributary testing including flow and nutrient sampling

- Lake vegetation should be surveyed on an annual basis (late spring and/or late summer/early fall) to document the results of plant management efforts and provide information necessary for planning future management.

## Early Detection Rapid Response (EDRR)

Early detection and rapid response, EDRR, addresses the critical period between introduction and establishment of a new invasive species population, and is the point when the focus of management shifts from prevention to containment, control and eradication. In Michigan, numerous watch list species are listed with established procedures to appropriately and efficiently respond to new invasions. This list to the right includes some high priority species within Michigan. Other species may be found within Michigan but not in Portage Lake and therefore would be considered a watchlist species for your lake (i.e. Starry stonewort).



Portage Lake has successfully used an EDRR protocol to address the new introductions in the last three years including, Starry stonewort and European frog bit. To better allow the Portage Lake management program and Invasive Species Committee to be successful, if and when a new nonnative species and/or watchlist species is found in Portage Lake, the following plan will take place:

- 1) Immediate notification to the Invasive Species Committee and/or Chair with possible phone call while still on site and/or email/phone call following survey.
- 2) Notification to local municipalities (Township and Village) via email.
- 3) Notification to the State of Michigan, including but not limited to EGLE, CISMA, Michigan Invasive Species Program, DNR.
- 4) Warning signage at the site, if needed, to prevent transport in/and out of area.
- 5) Containment of area if possible.
- 6) Review of management options with committee including but not limited to the following: use of funds from current SAD fund, if applicable; implementation of best management practices for control.
- 7) Control Implementation as quickly as possible to stop further spread.

This policy may be modified and updated as required by the committee. Additional resources are set up to assist in identification and management including [www.misin.msu.edu](http://www.misin.msu.edu); [www.michigan.gov/invasives](http://www.michigan.gov/invasives)

If and when a species is found during an active treatment and if Lake Manager determines immediate threat and if the permits, etc. are in place and if management follows standard best management practices, implementation of control may take place on site.

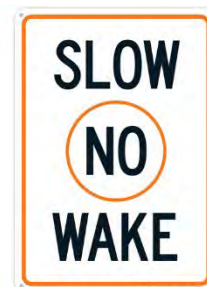
## Wake Boats

The popularity of wake sports has been on the rise over the past decade and with it the number of “wake boats” operating on lakes. Whether wake boarding or wake surfing, these boats are designed to produce large waves. Hull shape, ballast tanks, adjustable plates, and horse power are some of the technologies used. These waves are often equal to or greater than most major storm events which can increase shoreline erosion. Unlike old school/conventional “ski” boats which typically push thrust parallel to the water’s surface, wake boats tend to push thrust at a downward angle and therefore have a greater potential to disrupt bottom sediments in addition to shoreline erosion.



Several recent scientific findings provide unequivocal evidence that the dramatic upsurge in popularity of enhanced wake dependent water sports are having an adverse impact on frequently exposed aquatic ecosystems. Shoreline degradation, shallow water habitat disturbance, safety related incidences, and damage to waterfront property occur primarily as a result of operating too close to shore. Waves decrease in size the longer they travel. When operated too close to the shoreline, extensive damage to natural shorelines, seawalls and waterfront property occur. Impacts from wake boats include but is not limited to high volume sediment resuspension, deposition and accumulation includes loss or degradation of fish spawning areas, less desirable fish species, loss of fish foraging habitat, impaired or destroyed adjoining wetlands and a reduction in the capacity of affected lakes, rivers and wetlands to support diverse and recreational opportunities (Johnstone *et al.*, 2010).

Studies conducted on different wake boat models suggest that thrust (depending on the trim angle) will typically reach a depth of ~12 feet. Operating wake boats in depths greater than 12 feet whenever possible is high recommended. Maintaining isolation areas from shorelines is also recommended and/or trying to avoid shoreline areas of importance due to erosion, habitat, etc. As time goes on there is certain to be more research done in this area and/or regulation. For the time being, being aware of potential effects on your lake and adapting boating practices to minimize impacts is the best practice.



## Fishery

Portage Lake has a diverse fishery including both cool and warm water species. Many of the fish species rely on vegetated areas to spawn, forage and seek refuge. A healthy native aquatic plant community offers favorable habitat for many species that benefit from the complexity of architectural diversity. Exotic invasive aquatic plant species, such as Eurasian watermilfoil and Starry Stonewort are known to displace native plant communities, reduce architectural diversity and have negative effects on fish populations. Managing exotic aquatic plant species while maintaining native plant communities promotes a healthy and stable fish community.



In 2023, an independent fish survey was completed by Advanced Ecological Management, under the oversight of Robert (Doug) Workman, PhD. That report is available in a separate document, but did find a diverse and healthy fish community with 28 species of fish observed. Although certain panfish were low in abundance (bluegill and pumpkin seed) others, the rock bass, were abundant and none appeared in poor health, even when less abundant. “The size of the fish were consistent or slightly better than the state average” and based on observations it is possible that “juvenile and egg predation from gobies could be contributing to lower abundances of bluegills and pumpkinseed sunfish”. Angers have reported small northern pike in the lake, but the survey found

“norther pike were consistent with state of Michigan average sized northern pike, which would indicate Portage Lake northern pike are not experiencing growth difficulties. “The baitfish community is diverse and abundant” and “alewives were the third most abundant species collected by AEM”. Observations were made on water quality and aquatic vegetation as well, as part of the evaluation and found “dissolved oxygen is adequate, conductivity is consistent with most inland lakes, and pH was adequate to support life in the lake”. Additionally, most of the vegetation found was native and at densities that provided great habitat. “A high density of aquatic vegetation could lead to problems with low dissolved oxygen in late summer” and Portage Lake did not appear to be too dense. Overall, further evaluation on gobies may provide more sight to their impact on bluegill and the low levels found in shallower areas.

Source: “Investigation of the Fish Community of Portage Lake in Manistee County, Michigan 2023”

## **Submersed Nonnative Plant Management**

Areas of nonnative plant growth need to be identified and mapped for management. Utilizing latest technologies available, such as GIS software, precise management maps can be created for implementation. Nonnative infestations, such as Eurasian watermilfoil, require prompt control. Methods of management are provided in this lake management plan. Although a variety of options are available and should be weighed out for each lake, the most common management method is treatment using herbicides.

Starry stonewort should be aggressively controlled to reduce biomass as soon as it is detected. Treatments are most effective when controlled early using algaecides such as SeClear G, Copper Sulfate, and/or Chelated Copper.

European frogbit should be aggressively controlled to reduce biomass as soon as it is detected. Physical, mechanical and chemical treatments are management options. Chemical control has proven effective when controlled early using products such as Flumioxazin and/or Diquat.

When management strategies are applicable and used correctly, control is achievable. Although one management strategy may have been successful for one waterbody, many factors impact success from lake to lake and each unique ecosystem and infestation requires evaluation.

## **Emergent Nonnative Plant Management**

Emergent species such as Purple loosestrife and Phragmites need to be actively monitored and control around the lake.

Purple loosestrife is an exotic species, which is out competing native vegetation, destroying valuable wetlands and animal habitat and expanding in density along Portage Lake. Purple loosestrife can be managed through a variety of techniques including hand pulling, digging, spot treatments or biological control. Selective control through the use of triclopyr (Renovate) is a feasible option for large or small infestations. Hand pulling/digging is more viable for small infestations or in response to an early detection and rapid response. The biological control effort, beetles, have shown positive control measures and this method. Portage Lake has utilized all three management efforts in the past.

Both native and nonnative Phragmites is present in the Portage Lake watershed. Nonnative Phrag, which can out compete native vegetation, destroys valuable wetlands and animal habitat. Research has proven that the BMP for Phragmites is to selectively control the plant through the use of glyphosate or imazapyr herbicides. Treatment techniques often include both hand swiping of plants as well as foliar spray. After treatment, controlled burns, cutting, mowing, etc. can be done with success to remove biomass. Burning or mowing prior to application can further the spread of this highly invasive species. Chemical treatment on Portage Lake has successful remove much of this biomass and allowed native plants to naturally recover.



Narrowleaf cattails, another exotic species, can outcompete native cattails and wetland vegetation. Management options are limited and spot treatments can be effective.

Japanese knotweed is yet another highly invasive nonnative plant found growing around Portage Lake. Although terrestrial, there are areas of it growing near the lake and as a highly invasive plant, management of this species should be considered.

## Native Plant Management

Native plants should be controlled primarily by harvesting if required. Unlike Eurasian watermilfoil, most native plants do not regrow rapidly after harvesting, and a single harvest is often sufficient to control them for the entire summer. Normally low-growing species should not be controlled unless unusually fertile growing conditions allow them to grow tall in areas of high recreational use. Contact herbicides applied at higher rates can be effective at controlling native plants that are causing a nuisance close to shore, in between docks.

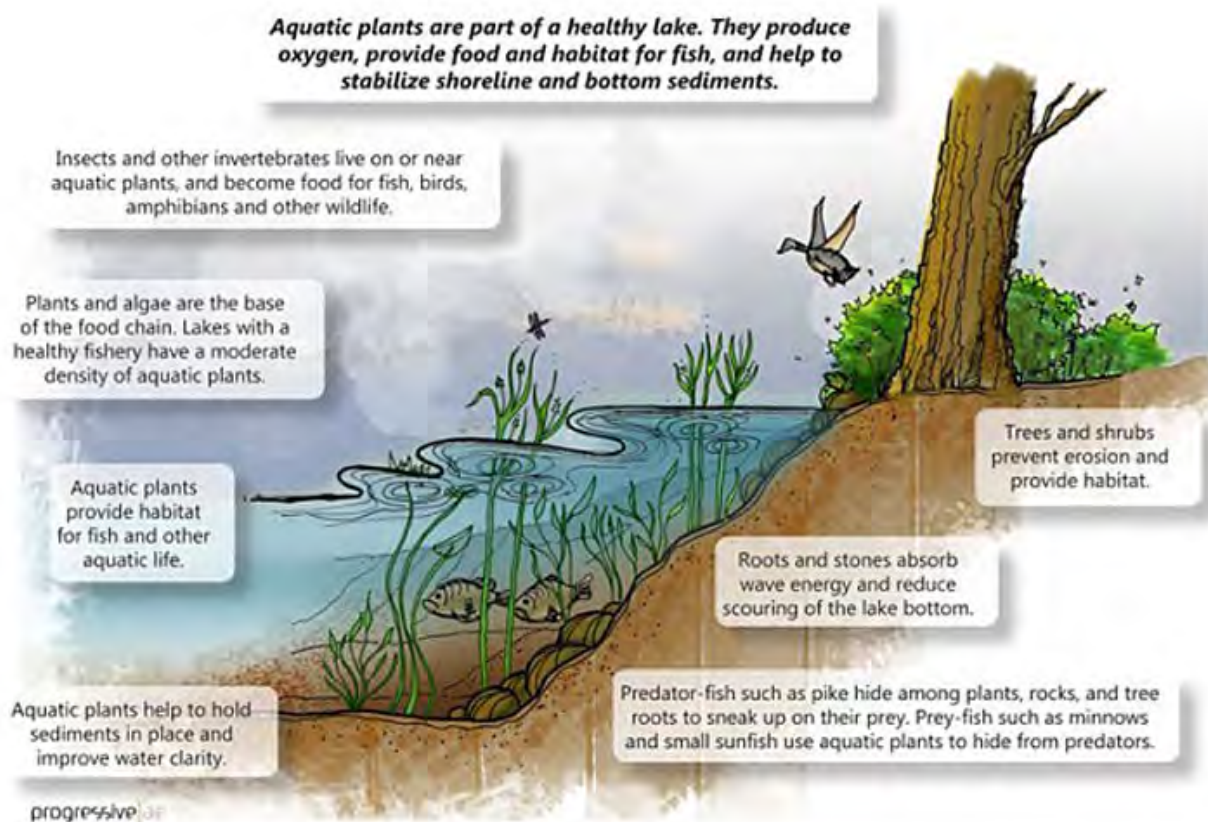


Photo curiosity Progressive AE

## Algae Management

Algae are divided into planktonic, filamentous, and macroalgae forms. Planktonic algae are microscopic, free floating plants, often referred to as "water bloom". In large number, the algae can cause water to appear green, brown, yellow, or even red. Cyanobacteria are planktonic algae and can produce a toxin called cyanotoxins. This doesn't mean that if you see any planktonic algae it will have a toxin, but it is wise to be cautious. These algae blooms can last from days to months if conditions are right. Filamentous algae, commonly called "pond scum" can form raft-like masses over the water surface. Since they are vulnerable to winds and currents, they are generally restricted to bays, bayous, and sheltered shorelines. Filamentous algae can grow attached to the lake bottom, weeds and docks. The filamentous algae will frequently detach from the lake bottom and form floating mats. The macroalgae includes three types, Chara, Starry stonewort and Nitella. Chara grows like a carpet on the bottom of the lake. It is nature's



water filter and is excellent for fish bedding. Chara grows approximately one inch a week during the summer months.

An overabundance of algae is an indicator that there is an excess amount of nutrients within the water column/lake, causing the waterbody to become overly productive. Algae are very beneficial in a lake ecosystem and can be thought of as the base of the food chain. Therefore, some algae is required.

However, when an algae reaches the point of hindering the use of the lake, control measures are available. Firstly, actions should be taken within the watershed to promote a healthy lake ecosystem and decrease nutrient loading, etc. However, no immediate change will be seen with these actions. Therefore, many lakes opt to include limited algae control within their management program.

Filamentous algae control is not required at this time, on Portage Lake. Whenever possible reducing nutrient loading entering the lake and watershed is recommended to help reduce future growth. A natural shoreline can also help buffer out nutrients,

Chara, a macroalgae should be encouraged lake wide and is one of the most vital species within the waterbody as it is a natural filter for clarity and is very beneficial for sediment stabilization and the fishery.

Starry stonewort, another macroalgae species, is nonnative and needs to be aggressively managed to prevent ecological damage and the loss of Chara. Although these species look similar, SSW requires immediate management, which can be done through chemical application as well as harvesting (mechanical and suction). This species can spread by fragmentation as well, so harvesting practices need to be very specific to avoid spread. Early detection and rapid response with chemical treatments have proven high effective. Established infestation management practices may differ.

Management of algae is best done through watershed management and reducing the nutrient loading that enters the lake, which can reduce the phosphorus present that feeds algae. If and when algae is present and requires management, a thorough review of options should take place. One common method of algae control is treatment using algaecides. Some algaecides contain copper based products. Whenever using a algaecides, permits, proper licensing and labels must be followed. One of the large concerns with using copper based products is with them building up in the sediments. Although it is true that copper accumulates in the environment, the accumulation occurs in the form of copper carbonates, which are not bioavailable. Copper is a necessary dietary micronutrient and is naturally found in the environment already and like any management tool, should be fully evaluated using best management practices and an integrated approach to determine the cost/risk benefit analysis of the species being discussed.

## **Natural Shoreline/Nutrient Loading Abatement**

Lakeshore property owners should be encouraged to use phosphorus-free fertilizers on lawns and other areas that drain into Portage Lake or the adjacent wetlands. Lakeshore residents should also be encouraged to manage their waterside landscapes according to the recommendations outlined in publications on this topic available from the MSU Extension.

It is also important to remember that rooted plants derive most of their key nutrients from the sediments; thus, they respond slowly, if at all, to reductions in nutrient loading. In fact, if reductions in nutrient loading lead to improved water clarity, the growth of rooted plants will probably increase.

If organic material (muck) accumulates to undesirable levels in shoreline areas, bacterial treatments should be considered as a way to alleviate the buildup.

Shoreline development has led to habitat degradation and as lakes continue to become more and more developed, the impacts continue to be damaging to the lake ecosystem. From mowed grass and sandy

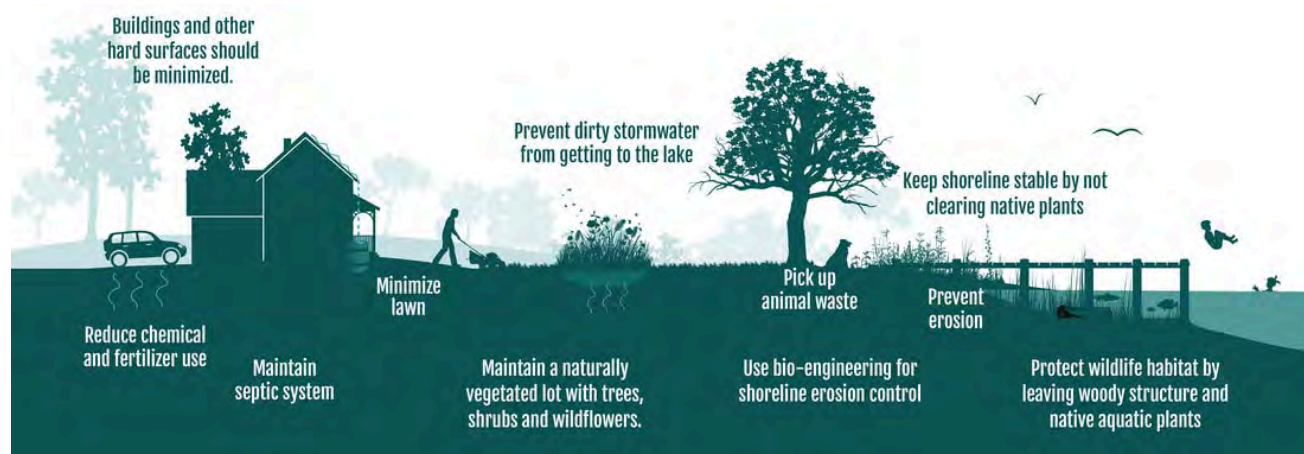
beaches, to seawalls and riprap to wake boat waves and fertilizer, development has negatively impacted a lake in all ecological aspects. By working to reduce the human footprint around the lake, the health of the lake will be improved. Natural shoreline restoration is helpful from reducing nutrient loading and runoff to providing habitat for frogs and fish to naturally defending against Canadian geese congregating in your yard, it is important that action is taken to minimize development impact and restore natural features.

The picture from MSU extension shows the same property with three different landscapes. Maintaining a natural shoreline can greatly aid in the overall health of the lake. “Left, traditional lake front landscape. Middle, residential lake front landscape: natural or restored buffer zones. Right, residential lake front landscape: manicured landscape with buffer zones. Graphics by Kristen Faasee.” Residents are encouraged to incorporate as much “natural” shoreline to their property as possible. Even with seawalls, changes can be made to be more environmentally friendly and preserve habitat while enjoying the beauty of the lake and the recreational access many desire.



Kristen Faasee, MSU Extension

The implementation of natural shorelines should be encouraged around Portage Lake. Converting seawall shorelines back to natural vegetation; plants, trees and shrubs along the water's edge has many benefits for the lake. Some of benefits of having a natural shoreline are erosion control, nutrient and pollution absorption, increase in wildlife and fish habitat and reduction of nuisance geese on lawns. If seawall removal is not feasible there are other options residents can do to improve and protect the lake. Placing rip rap in front of a seawall will help reduce wave action thus reducing lake scour. Rip rap can also create a suitable shoreline for animals to access the land and provide places for aquatic insects and plants to grow. Also, native vegetation can be planted within the rip rap, creating a more natural shoreline. Adding rip rap is an easy, affordable and effective way to help the lake. For more information please visit: <https://www.shorelinepartnership.org/>



Picture courtesy of MI Natural Shoreline Partnership

## Restoration

Pending the level of a waterbody's impairment, specific activities such as phosphorus mitigation, native plantings, fish plantings, etc. can be recommended. As this varies tremendous on a site by site basis, it

is generally best to work with healthy lake front living practices, early detection rapid response and education/outreach to prevent infestations and make improvements in the overall ecosystem.

In regards to nonnative plant infestations, it is best to control early. Controlling nonnative plants early is key to lowering the impact to the native plant communities. If and when a monoculture is formed, there is no guarantee that a native species will return. In most cases, once a nonnative plant has been controlled, native plants will naturally flourish in that area. If and when a planting is considered, it is important to only use native species as well as species that have a historical presence within that system. Even native species, once introduced into a new environment can cause negative impacts and have consequences (i.e. Wild Celery (*Vallisneria americana*)).

## Lake Management Approaches

Areas of the lake that support vegetation will grow plants, despite intense efforts to remove them. Aquatic vegetation provides important benefits to a lake, including stabilizing sediments, providing habitat for fish and other aquatic organisms, and slowing the spread of exotic plant species. In general, native plants interfere less with recreation and other human activities than exotic species. Non-native plant species, Eurasian watermilfoil and curly leaf pondweed concentrate their biomass at the water surface where they strongly interfere with boating, swimming and other human activities. This growth form also allows exotic plants to displace native plants and form a monospecific (i.e., single species) plant community. The dense surface canopies of Eurasian watermilfoil and Curly leaf pondweed provide a lower quality habitat than that provided by a diverse community of native plants. Control of exotic plant species minimizes interference of plant growth with human activities and protects the native vegetation of the lake. The goal of environmentally responsible aquatic plant management, therefore, is not to remove all vegetation, but to control the types of plants that grow in the lake and the height of plants, to minimize interference with human activities. All activities performed should be do so using best management practices (BMP) and an integrated pest management (IPM) approach using environmental sound technologies and finically feasible options.

It is important that control techniques meet the needs and expectations of lake users. Each technique has advantages and disadvantages. Many aquatic plants are relatively susceptible to some control measures but resistant to others. Too often, lake groups select a control technique before determining what their needs are and the pros and cons associated with various techniques. Further, upon goals being achieved or shifted, various practices may become better suited (or less) for a desired outcome. Often times, one practice will not meet every stakeholders individual goal, however the established practice for various pests needs to be explored for the outcome that best meets practicability. All practices have inherit risk associated with them and reviewing best management practices can be determine which is best suited for each individual situation.

## Aeration

Aeration can be a beneficial tool to sustain ecological balance within an aquatic ecosystem. By maintaining sufficient oxygen levels throughout a waterbody, the entire eutrophication process can be slowed down, the health of the fishery can be maintained and overall water quality can be improved. The implementation of an aeration system to control rooted aquatic plant growth is not recommended. Rooted plants, such as Eurasian watermilfoil, will not be affected by aeration. Similar to the use of biological control, the impact of aeration on improving water quality and reducing organic sediment will vary greatly from site to site. Therefore, it is extremely important to thoroughly evaluate each site's conditions and expectations before implementing an aeration system. Aeration systems are regulated by EGLE with an extensive and costly monitoring program. Aeration is not permitted and hould not be used for plant management. It can be used to help improve dissolved oxygen levels in lakes. The cost of aeration systems can very and are currently not permittable



in deep water with the State of Michigan. Additional costs include electrical costs and maintenance in addition to the water quality testing and equipment. Project costs are various with ballpark figures of \$10,000-\$15,000 for a 10 acre shallow basins with estimated annually management/testing fees of \$5,000. Some Pros: Potential improvement in DO, water quality. Some Cons: Cost, permitting, maintenance.

### Bacteria augmentation

The use of bacteria product formulations and application techniques has greatly improved in recent years. Granular bacteria products can be applied to specific shoreline areas to reduce organic muck that has accumulated over the years. As waterbodies age, organic sediment can build up due to excessive plant and algae growth. This process is called eutrophication. Increasing native populations of bacteria can slow this process down. Reductions in the depth of muck may depend on many variables. Most importantly, the percent of sediment that is organic. The more organics in the sediment, the greater the potential for muck reduction via bacteria augmentation. Bacteria use is performed under a Rule 97 permit, overseen by EGLE and is a nonrestrive, all natural product. Bacteria augmentation is utilized within lake management for muck control, not plant or algae management. Costs of products can range, with an approximate cost of \$300/acre/application. Application recommendations vary with product and are typically monthly during the warmer months, equating to \$1,500.00/acre/season. Some Pros: All natural product, DIY. Some Cons: Slow results, varied amongst site conditions.

### Benthic barriers

The use of benthic barriers dates back quite far as a form of pest or weed control. Mats can be placed on bottom sediments to stop light penetration and control places in small areas. This method is not selective and should be used with caution in areas of spawning. Securely placing mats and avoiding navigational hazards is highly important as well. This management technique does require a permit through EGLE and should be used in smaller areas to avoid negative impacts to the native plant community. Benthic barriers are not species selective, therefore using them in areas of high native plant diversity is discouraged as they can negatively impact native plants. The cost and practicality of placing them is most appropriate for small scale projects. Various materials can be used but need to be environmentally friendly and costs can vary. For example, Lake Leelanau has spent ~\$200,000 in two years to control several acres (~3.5) of EWM, giving that program an average of \$57,142/acre. The manpower/labor of installing the mats is a large portion of this as well. Some Pros: Chemical free. Some Cons: non selective, cost, labor, navigation, water depth.



### Biological control

Biological control options for nuisance aquatic vegetation are limited. Grass carp, which indiscriminately devour aquatic vegetation, have been restricted in many states because of their nonselective grazing



and fear they may escape into nonintended waters. The use of the milfoil weevil (*Euhrychipsis lecontei*) to control Eurasian watermilfoil has been implemented in many Michigan lakes. The idea of using a native weevil to target nonnative plants would be ideal, but the success remains extremely varied. Overwintering, shoreline habitat, being eaten by fish are some concerns evaluated when reviewing the appropriateness of planting them on a waterbody. PLM Lake & Land Management Corp has many years of experience participating in weevil stocking, evaluations and longterm observations related to their performance and



sustainability. Although the milfoil weevils may impact EWM populations in certain situations, the use of this tool remains unpredictable. Often time control was off the top few inches of the plant, potentially stopping a canopy from forming, but not controlling the entire plant and leaving it available for fragmentation as well as negative impacts to native plant communities. In recent years, the production of milfoil weevils has ceased. Historically, a weevil cost ~\$1.00/bug and thousands would be needed per acre with annual stocking. The use of Purple loosestrife beetles (*Galerucella* beetle) has shown some success on dense infestations of Purple loosestrife with less impact on sparse populations. Some Pros: non chemical; natural. Some Cons: Cost; habitat/overwintering/shoreline; being eaten by fish; results are varied.

## Chemical control

Michigan Department of Environment, Great Lakes and Energy (EGLE) regulates the use of chemical control in lakes and ponds across Michigan. This highly restrictive practice uses federal and state approved herbicides and/or algacides under permits for controlling plants or algae. Dosage, timing, product, and location and among some factors restricted by the permit. The use of aquatic herbicides, is the most common strategy for controlling nonnative or exotic plant species. Aquatic herbicides provide predictable results and there is a great deal of research and data regarding these products. There are two types of herbicides, systemic or contact. Many of the aquatic herbicides available can be used to selectively control exotic species with minimal or no impact on native species.

Systemic herbicides are capable of killing the entire Eurasian watermilfoil plant with little or no impact on most native plant species. Under ideal conditions, several consecutive annual applications of these herbicides can reduce Eurasian watermilfoil to maintenance (low) abundance, such that only relatively small spot treatments are required to keep it under control. For this strategy to succeed, it is necessary to treat most of the Eurasian watermilfoil in the lake each time. There are currently five systemic herbicides, 2,4-D (Sculpin G or Navigate), Triclopyr (Renovate 3 & OTF), Fluridone (Sonar or Avast), and ProcellaCOR which can be used to achieve long-term, selective control of Eurasian watermilfoil. ProcellaCOR has systemic like capabilities, while using low application rates and potentially allowing for multiple season control. Triclopyr is a systemic herbicide with selectivity very similar to 2,4-D. Triclopyr is not subject to the well setback restrictions that currently affect 2,4-D. Therefore, triclopyr can be used to control Eurasian watermilfoil in near shore areas. A combination of both systemic herbicides in Portage Lake could greatly reduce the growing Eurasian watermilfoil problem.

Several contact herbicides, including diquat (Reward) can also provide short-term control of Eurasian watermilfoil and other nonnative species. These herbicides kill only the shoots of the plant, and plants regrow relatively rapidly from their unaffected below ground parts.

Chemical control should only be used by licensed and trained applicators. The State of Michigan has a rigorous licensing protocol. Additionally, using an experienced applicator can ensure that proper dosages and labels are followed. The label is the law when using aquatic herbicides. When using any sort of drug or chemical, from Tylenol to caffeine to herbicides, inherent risk is involved. Aquatic herbicides have inherent risk that is reduced through proper use. Using a licensed applicator does increase the cost of chemical control, as does applying them under a State of Michigan EGLE permit. Depending on the type of product as well as the location within the lake, water depth, etc., the rate of products can vary, further impacting cost. Some products can provide residual (seasonal or multiple season control) while others are short term. Cost per acre of control can vary, but systemic control with the goal of seasonal management can range from \$400-\$800/acre. Some Pros: selective; lower per acre cost than other options; can be used numerous water types, i.e. flow, no-flow, deep, shallow, turbid, etc.; fast acting; used in small and large scale systems. Some Cons: use of chemicals is often misunderstood and not organic; plant response can vary; may require annual management; water use restrictions may apply including irrigation restrictions.



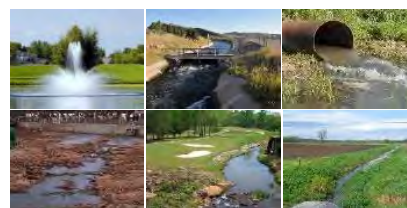
## Diver assisted suction harvesting (DASH)

DASH utilizes a suction hose and a diver that hand removes individual plants in selected areas (similar to a vacuum). On land, the collection of material is removed to an offsite location. This management option is also permitted through EGLE. Although very costly on a per acre basis, it is more commonly used on very small infestations. Bottom sediment type is a consideration with this management type as the area can become very stirred up and make visibility extremely difficult, impacting the end results. As fragmentation is a concern, prevention of spreading plants needs to be a consideration. This tool can be used specifically for both nonnative and native species. DASH costs can vary pending projects and is typically charged on a per day basis/project based on depth, location from access/shore, etc. With varying costs, an approximate range is \$6,000- \$9,000/acre. Some Pros: Non chemical management. Some Cons: Cost; offsite disposal; turbidity/visibility may impact results, distance from shore/access site.

## EutroSORB – Phosphorus Filtration Technology

Reducing the phosphorus loading coming into the waterbody, specifically from the numerous creeks and storm drains entering Portage Lake would directly improve the waterbody. Through new technology, SePRO (a leader in water quality enhancement technology) has developed a phosphorus filtration product, EutroSORB, that rapidly binds nutrients in flowing water. This proactive water management technique is a critical need for most waterbodies large and small. This ecologically benign product can be used to offset the need for responsive algae management. EutroSORB bags filter phosphorus from entering a waterbody for a safe, efficient and environmental sound alternative for nutrient control. As a new technology, prices are not yet available as the State of Michigan is still finalizing the permitting process. Some Pros: proactive approach; non herbicide; preventative. Some Cons: permitting.

**EutroSORB™**  
Phosphorus Filtration Technology



## Mechanical harvesting

Mechanical harvesting is best suited for native plant species. Most native plant species have a higher tolerance to aquatic herbicides and require higher dosage rates (higher cost and reduced selectivity).

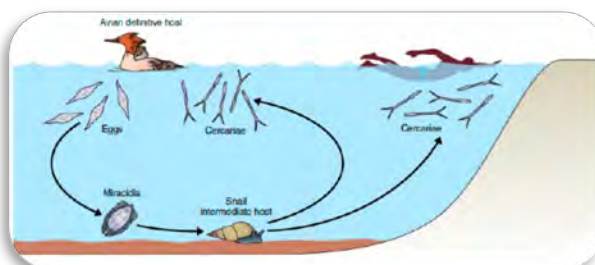


Mechanical harvesting can be used to provide relief from native plant species if they are causing a recreational nuisance. Harvesting does not kill the plants, but simply reduces it's stature, leaving lower growth for fish habitat and sediment stabilization. Mechanical harvesting of Eurasian watermilfoil is not recommended as it will expedite its spread throughout a lake through fragmentation. Harvesting is typically charged on a per hour basis and there is often a minimum mobilization fee associated with moving equipment into an area, meaning that it is often best suited for medium

or larger projects. Cost per acre can range and are often estimated at \$300- \$700/hour. Some Pros: Non chemical; quick results. Some Cons: Non selective; depth/distance from shore; dumping/offload sites; speed on water.

## Swimmers itch

Swimmers itch, caused by a parasite that travels through waterfowl (i.e. Mergansers) after eating snails and is present in the water column. This parasite can cause an allergic reaction on the skin of lake users, resulting in a rash. Although managing a lake for swimmers itch is difficult, there are preventions that swimmers can use to reduce the impact. Applying



sunscreen prior to water entry to create a barrier on your skin, toweling dry immediately upon leaving the water and swimming in deeper water are recommended. Michigan Department of Environment, Great Lakes and Energy (EGLE) no longer permits the control of Swimmers Itch using copper sulfate, which was historically done. Reducing the presence of the parasite by limiting the presence of the hosts (Mergansers) is promising. Much research is being done on this front currently across the State of Michigan and additional management recommendations may become available in the future.

## Lake Management Activities Conducted in 2023

### Water Quality

Water quality was evaluated on May 2, June 7, July 27, and September 20, 2023. The May sampling included storm drain and tributary testing. In June, deep hole testing and shoreline testing of Portage Lake occurred. The later July sampling for deep hole testing occurred (this was an additional sampling added into the program in 2015) as well as shoreline sampling. During the last sampling; tributaries, shoreline and the deep hole basins were sampled. During the deep hole sampling the following occurred, (1) a depth profile of water temperature and dissolved oxygen concentrations were measured at ten foot intervals at both Deep Hole Basins and the Secchi disk depth was measured, (2) samples for LakeCheck™ analysis was collected from the deep holes of the lake (surface, bottom and every 10' between) for numerous parameters, (3) chlorophyll and algal composition analysis was collected from surface, mid thermocline and bottom samples. During the shoreline sampling, the following occurred, (1) depth profile for water temperature and dissolved oxygen concentrations were measured at the surface, (2) samples for LakeCheck™ analysis was collected at the surface for numerous parameters, (3) chlorophyll and algae composition analysis was collected at the surface. During the Storm Drain sampling the following occurred at four designated drains, (1) Flow testing, (2) surface reading of temperature and dissolved oxygen (3) samples for LakeCheck™ analysis was collected. During the tributary testing, the following occurred at seven designated tributaries, (1) surface reading for temperature and dissolved oxygen, (2) samples for LakeCheck™ analysis was collected and (3) flow was determined. LakeCheck measures at the various sites included some or all of the following parameters: Conductivity, Total Dissolved Solids, pH, Conductivity, Total Phosphorus, Oxidative Reduction Potential (ORP), Alkalinity, Ammonia, Nitrates and Total Kjeldahl Nitrogen. The additional tributary testing included sampling at one tributary and including testing multiple locations from the entrance at the lake, upstream. Parameters tested included Total Phosphorus, Nitrates and Alkalinity.



Eurasian watermilfoil

### Weather Challenges of 2023

Michigan winters are usually quite different from year to year. While some are very cold and have high snowfall amounts, others are the opposite. The winter of 2022/2023 was once again, relatively mild. When looking at the previous few winters, which were also rather mild, it brings some concern with how the lakes, specifically the plants, will respond the following summer. Weather patterns can have impacts well into the next few seasons, so when we have a mild Michigan winter, it is not helpful with controlling exotic species. Further, ice coverage came late and was not as thick as normal; leading to more sunlight penetration and ability for EWM to overwinter. Weather patterns throughout the summer also have impacts. Each lake responds differently from the weather impact and as Portage Lake tends to be slow to grow in the spring, the longer, warmer falls may impact growth differently than smaller, inland lakes. Finally, weather patterns have brought unusually high-water levels to the Great Lakes, which in turn have had large impacts on Portage Lake. Changes in water levels will have impacts on a waterbody, both short and long term and do need to be taken into consideration when managing aquatic plants.

Exotic species tend to benefit from changes in weather conditions. In Portage Lake, little plant growth is evident early on into the growing season and it is not until mid-summer that diverse plant coverage is

found. Weather patterns can have impacts on lakes and individual plant trends that may not be evident right way.

## Aquatic Plant Control

Nonnative (submersed) plant treatments were conducted in June to control Eurasian watermilfoil (EWM) and Curlyleaf pondweed in Portage Lake. Phragmites, Japanese knotweed and narrowleaf cattails (individually done) was also treated throughout the summer and fall of 2023. The lake was closely monitored this year for any areas of exotic plant growth and treated accordingly.

Control for European frogbit was performed by PLM in August 2023 via physical removal methods (hand pulling). The North County CISMA group was also contracted in 2023 to do physical removal of European frogbit.

The management strategy for the control of Eurasian watermilfoil has been working, with substantial reductions in EWM treatments from when the initial treatments began. Although some years see some fluctuation, overall there is a downward trend. However, despite our efforts, EWM control is a constant battle that is heightened with hybrid watermilfoil. The presence of Hybrid watermilfoil supports the conclusion that milfoil treatments will continue to be required annually. Although fewer acres of milfoil management have been required in recent years, the recommended application rates have increased, which uses up the budget more quickly. It is important to plan according for increasing costs from the economy as well as from an evolving plant community. In 2020, through early detection and rapid response, Starry stonewort was identified and treated quickly, in hopes of limiting the spread lake wide. 2023 surveys found the previous year's actions to be very successful, and no growth was found. In 2022, through early detection and rapid response, European frogbit (EFB) was identified and treated quickly as well. A few small areas of EFB were found in 2023. Having a management program in place allowed for both SSW and EFB to be detected and managed within a matter of days versus months. Post survey results have showed a highly effective treatment and time will tell on future impact from these species.



A reflection of proper/successful management is a good fishery, which has been verified through Michigan DNR surveys, independently contracted surveys (separate reports available), as well as the fishing reports on the lake.

The Phragmites Treatment Program has been very effective as well. After the initial treatment of 83 acres, the follow up years have required just small treatments in proportion to the initial application. In certain years, Purple loosestrife beetles have been planted as a biological control method in the Portage Lake Plan. Access to beetles is currently limited and has prevented new plantings.

The below maps and table show a breakdown of the treatments in Portage Lake in 2023.

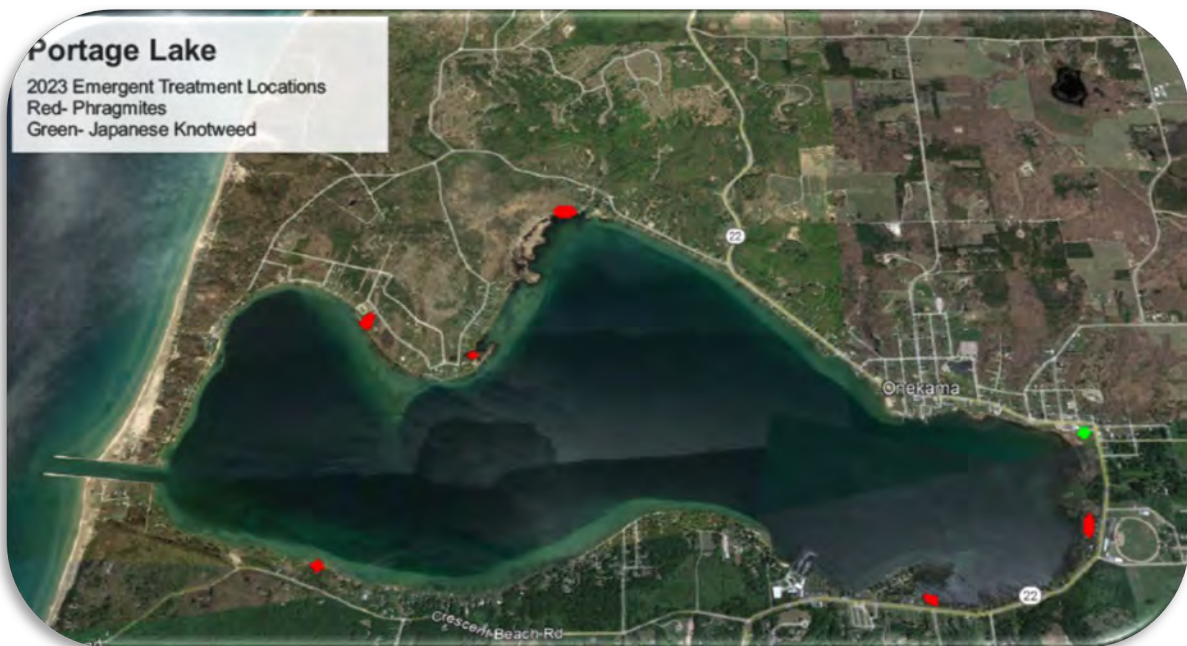


### Map 1: Portage Lake June 2023 Treatment Map



June 15, 2023 EWM and CLP Treatment, 6.35 acres Flumioxazin, marked in yellow.

### Map 2: Portage Lake 2023 Emergent Treatment Map



2023 Emergent Treatment Map ~ 1 acre Phragmites (red) and Japanese knotweed (green)



**Map 3: Private nonnative emergent treatment areas**

**Private Nonnative Emergent Treatment Areas**

i.e. Narrowleaf cattails <0.2acres



**Map 4: Portage Lake 2009 EWM Infestation Treatment Map**

Portage Lake  
Onkama, MI  
2009 EWM Treatment (161acres)





**Table 1: Submersed Plant Treatment Quantities 2023**

		Product	Rate lbs/Acre	Acres	Total Acres
<b>2023</b>	15-Jun	Flumioxazin	200ppb	6.35	6.35

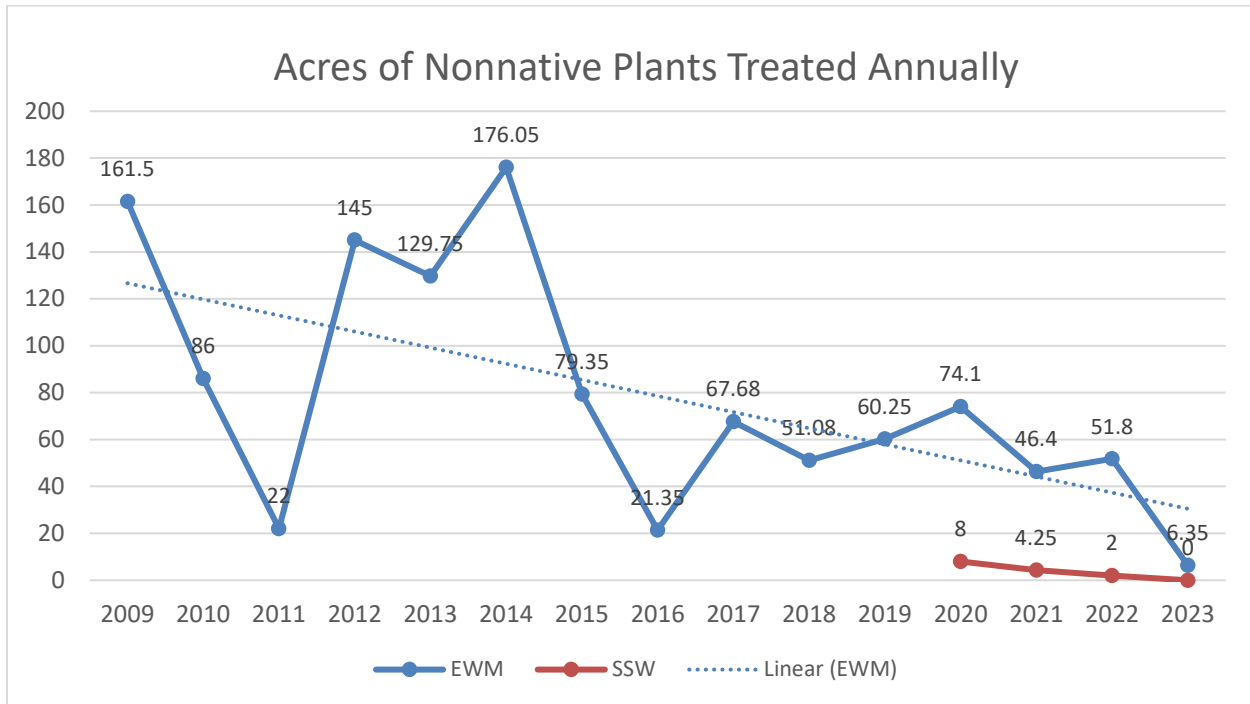
For a complete, historical overview of product usage, treatment dates, acres, etc., please see addendum 2.

**Table 2: Terrestrial Treatment Summary 2023-2009**

(Phragmites, Narrow leaf cattails, Yellow iris, Purple loosestrife, Japanese knotweed)-

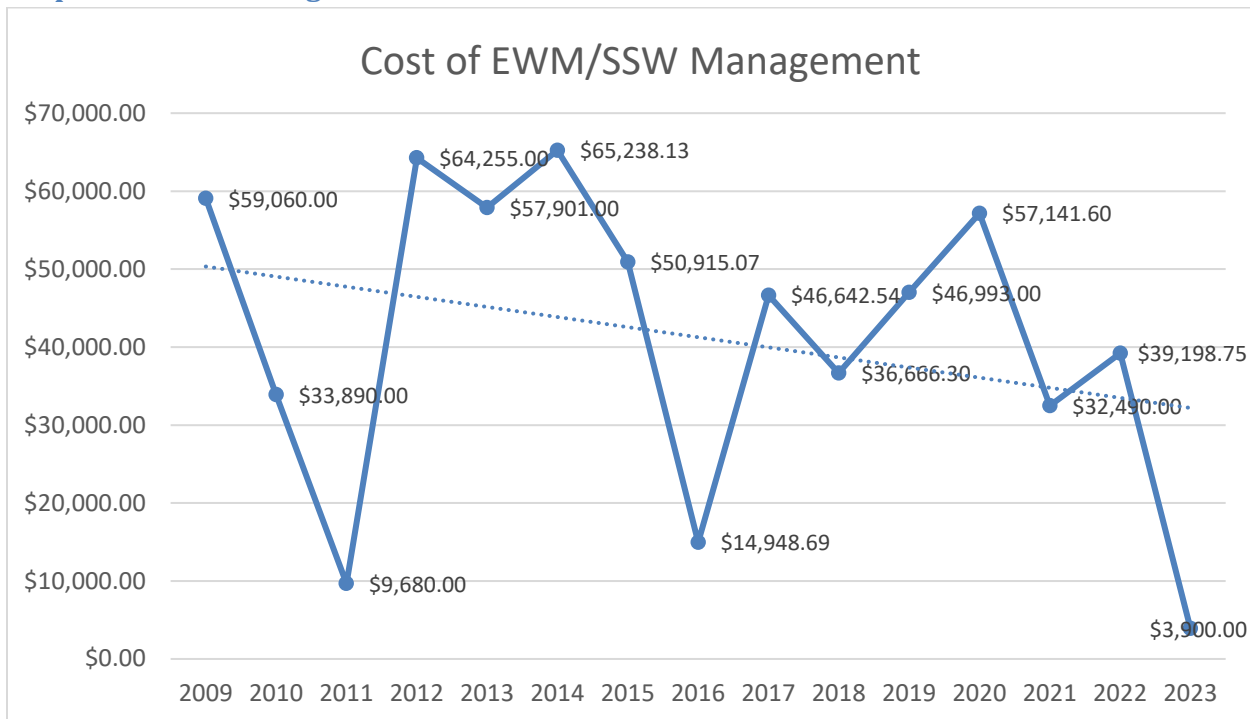
Year	Product	Rate	Acres
2023	Glyphosate, Milestone	5%	1.0
2022	Glyphosate	5%	0.2
2021	Glyphosate	5%	0.23
2020	Glyphosate	5%	0.35
2019	Glyphosate/Imazapyr	3%	6.8
2018	Glyphosate/Imazapyr	1.5, 3%	0.2
2017	Glyphosate/Imazapyr	1-3%	0.15
2016	Glyphosate/Imazapyr	1-3%	0.48
2015	Glyphosate/Imazapyr; Triclopyr	1-3%	4
2014	Glyphosate/Imazapyr	4%	6.2
2013	Glyphosate/Imazapyr	2%	7.9
2012	Glyphosate/Imazapyr	2%	13.5
2011	Glyphosate/Imazapyr	2%	7
2010	Glyphosate/Imazapyr	2%	10
2009	Glyphosate/Imazapyr	2%	83

**Graph 1: Annual Management Acres**



This graph shows acres of EWM and SSW treated since the start of the program. The EWM trendline shows a clear trend down, indicating the success of reducing the coverage of EWM through proper management techniques.

**Graph 2: Annual Management Cost**



Graph 2 shows the cost of EWM and SSW treatment since the start of the program. The overall trendline here is decreasing as well, an excellent sign. Although unit costs have increased with application rates and economic impacts, the program has been able to keep a similar budget and minimize cost increases whenever possible.

## Planning/Evaluation

Surveys of the aquatic vegetation of the lake were conducted on June 7, 15, 28; July 27; August 2, 18, 31; September 20, 21 and 27, 2023. Surveys of the lake were made frequently throughout the summer months for pre or post treatment evaluation, to collect water quality parameters, as well as to have additional survey data available for management purposes. Vegetation surveys determine the locations of target and non-target plant species. The results of the surveys are used to determine the most appropriate management strategy. The vegetation surveys also document the success of the prescribed management program. An AVAS survey is the State of Michigan's method for conducting a complete aquatic vegetation survey. The Aquatic Vegetation Assessment Site (AVAS) survey divides the parts of the lake capable of growing plants (littoral zone) into subareas and records the cover of each aquatic plant found in each "site". This method of surveying considers not only the types of plant species present in the lake but also the densities of those species. AVAS surveys are also an excellent way to track plant species trends over time. A goal of invasive plant management is to have native plants increase while exotic plants decrease over time. The success of this goal can be illustrated using the AVAS data collected over several years. Since different native plants grow at varying times throughout the season, it is important to evaluate the lake multiple times to account for *all* species in the lake. The first evaluation is conducted in the spring/early summer while the second is conducted in late summer or fall.

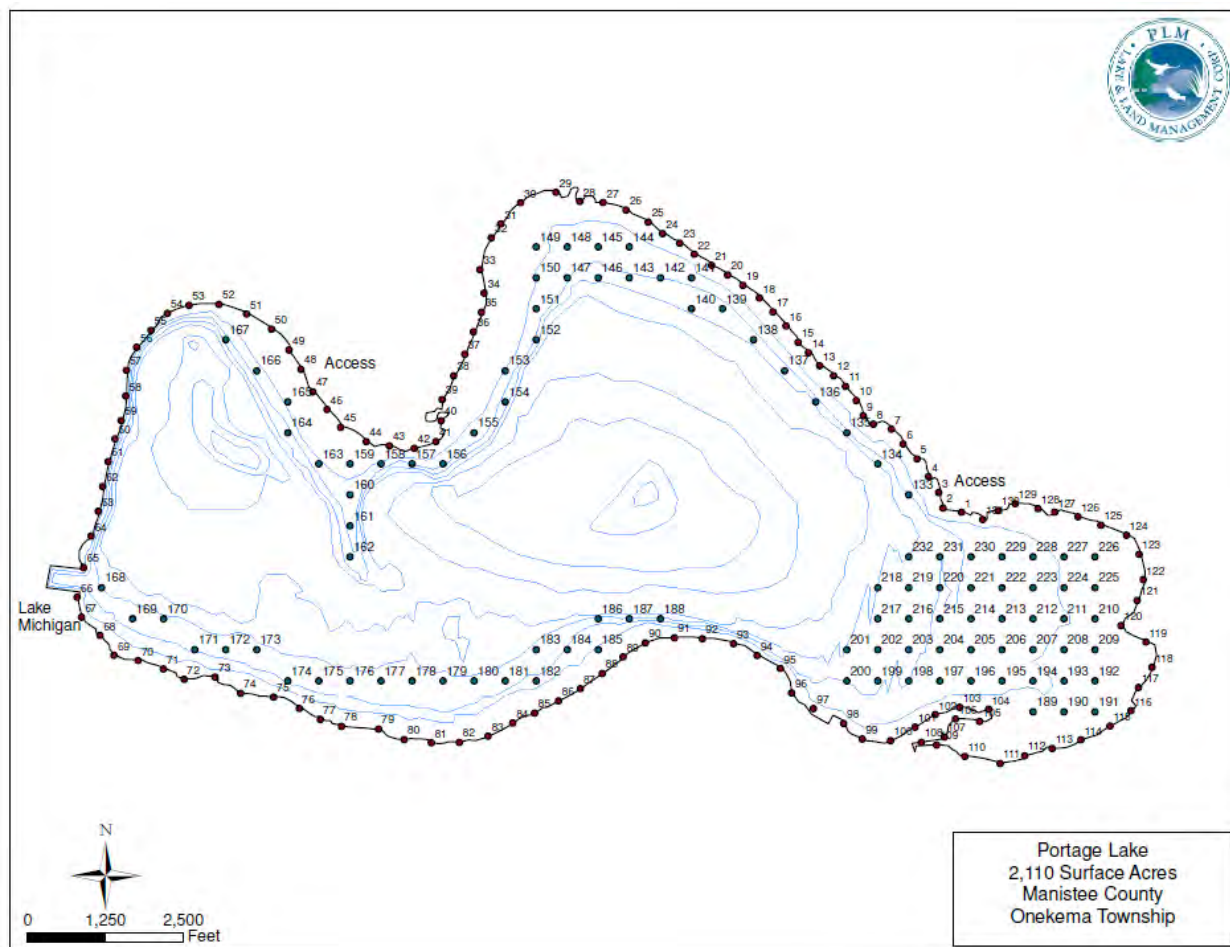
**Table 3: Plant Species Found in Portage Lake –2023**

**\* Based from boat survey, not as precise as a walking shoreline survey**

AVAS Code	Common Name	Scientific Name	% Cumulative Cover June 2023	% Cumulative Cover September 2023
	<b>Submerged- Exotic</b>			
1	Eurasian watermilfoil	<i>Myriophyllum spicatum</i>	0.20	0.65
2	Curlyleaf pondweed	<i>Potamogeton crispus</i>	0.82	0.01
29	Starry stonewort	<i>Nitellopsis obtusa</i>	0.00	0.00
	<b>Submerged- Native</b>			
3	Muskgrass	<i>Chara</i>	26.80	37.41
4	Thinleaf pondweed	<i>Potamogeton spp.</i>	4.06	2.26
5	Flatstem pondweed	<i>Potamogeton zosteriformis</i>	2.01	4.52
6	Robbins pondweed	<i>Potamogeton robbinsii</i>	0.00	0.22
7	Variable leaf pondweed	<i>Potamogeton gramineus</i>	4.62	4.97
8	White stem pondweed	<i>Potamogeton praelongus</i>	2.77	6.00
9	Richardsons pondweed	<i>Potamogeton richardsonii</i>	4.84	5.29
10	Illinois pondweed	<i>Potamogeton illinoensis</i>	2.34	5.78
11	Largeleaf pondweed	<i>Potamogeton amplifolius</i>	1.55	2.20
12	American pondweed	<i>Potamogeton americanus</i>	0.00	0.18
14	Water stargrass	<i>Zosteria dubia</i>	0.09	0.00
15	Wild Celery	<i>Vallisneria Americana</i>	7.46	17.34
17	Northern milfoil	<i>Myriophyllum sibiricum</i>	0.06	0.21
19	Variable leaf watermilfoil	<i>Myriophyllum heterophyllum</i>	0.00	0.01
20	Coontail	<i>Ceratophyllum demersum</i>	0.78	0.95
21	Elodea	<i>Elodea Canadensis</i>	1.59	0.98
22	Bladderwort	<i>Utricularia vulgaris</i>	0.65	0.32
24	Buttercup	<i>Ranunculus longirostris</i>	0.04	0.00
25	Naiad	<i>Najas flexilis</i>	2.03	12.41
27	Sago pondweed	<i>Potamogeton pectinatus</i>	0.75	3.38
48	Water smartweed	<i>Polygonum amphibium</i>	0.00	0.00
	<b>Floating leaf- Native</b>			
30	Water lily	<i>Nymphaea odorata</i>	0.00	0.00
33	Duckweed	<i>Lemna minor</i>	0.04	0.00
	<b>Floating leaf- Exotic</b>			
50	European frogbit	<i>Hydrocharis moresus-ranae</i>	0.00	0.09
	<b>Emergent- Native</b>			

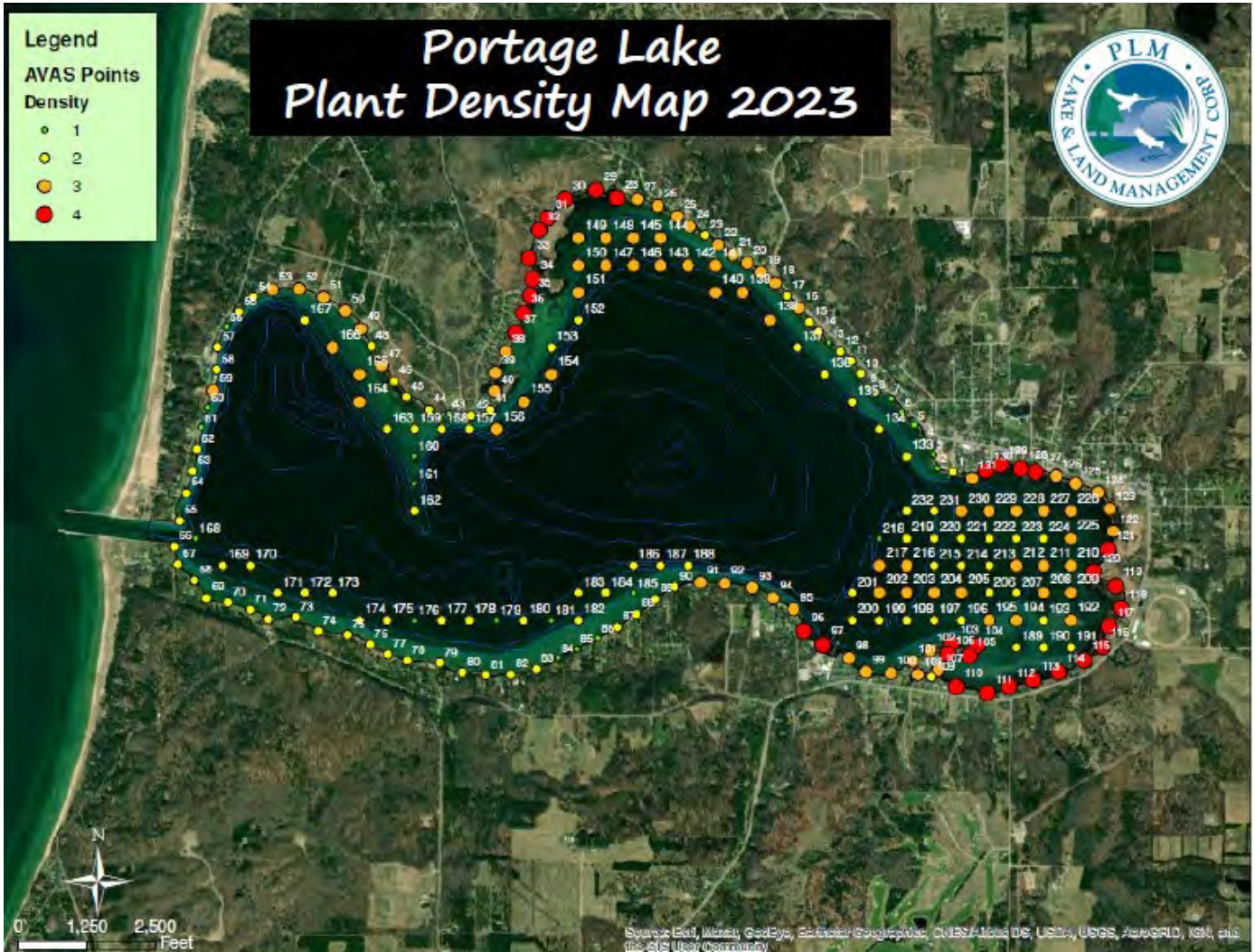
37	Pickeralweed	<i>Pontederia cordata</i>	0.00	0.00
39	Cattail	<i>Typha spp.</i>	9.31	9.99
40	Bulrush	<i>Scirpus spp.</i>	8.31	9.08
42	Swamp loosestrife	<i>Dianthera americana</i>	0.00	0.00
	<b>Emergent - Exotic</b>			
43	Purple loosestrife	<i>Lythrum salicaria</i>	0.00	0.00
44	Common reed	<i>Phragmites</i>	0.07	0.02
46	Slender spike rush	<i>Eleocharis baldwinii</i>	0.00	0.04
	<b>Total</b>		<b>81.29</b>	<b>124.31</b>

**Map 6: Portage Lake AVAS/Grid Combination Map (updated in 2022)**

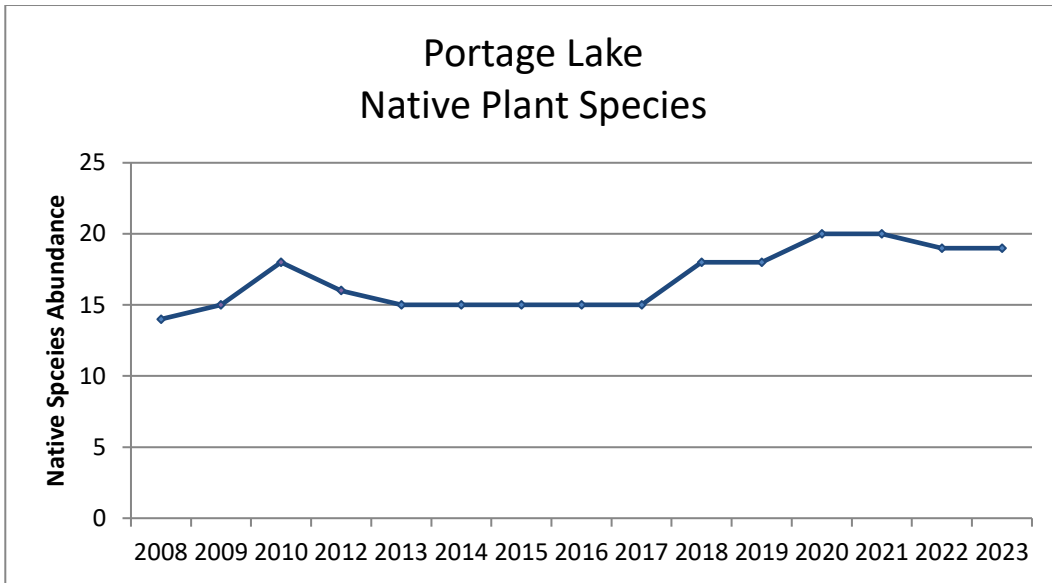




## Map 7: Portage Lake 2023 Plant Density Map



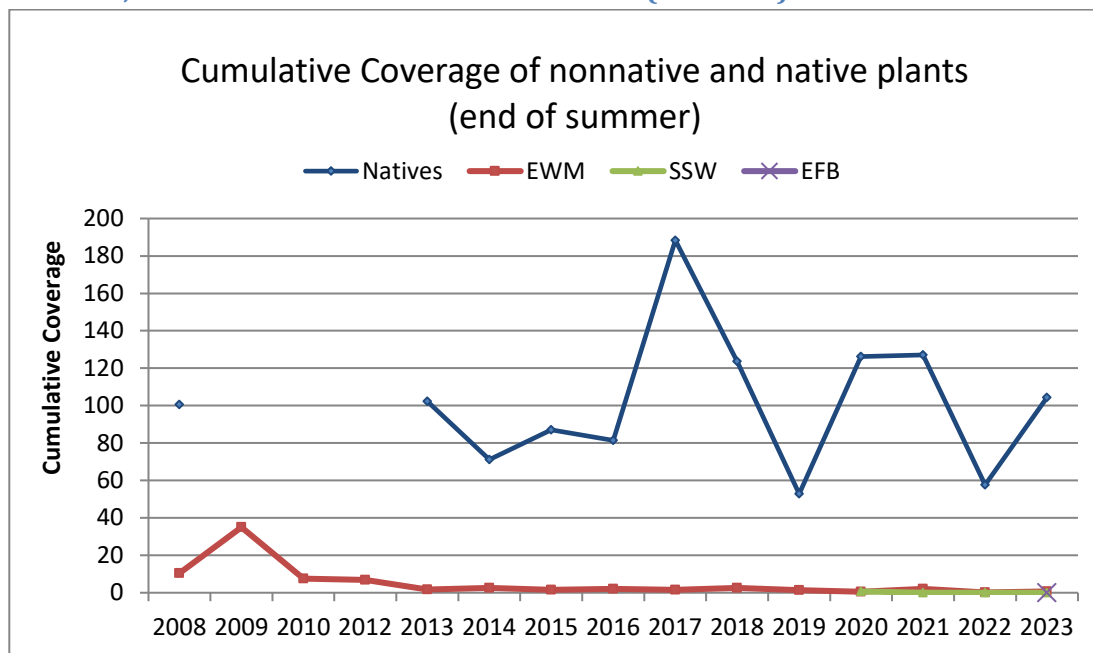
### Graph 3: Native Plant Species (Fall AVAS Surveys)



Graph 3 shows the diversity of native plants in Portage Lake. Portage Lake has excellent native plant diversity and this has been maintained throughout managing the nonnative plant species within the waterbody. Although seasonal fluctuation is expected, trendlines are strong and maintaining a diverse native plant community has been archived.



**Graph 4: EWM, SSW & Native Plant Cumulative Cover (Fall Data)**



Graph 4 shows the cumulative coverage of EWM, SSW, EFB & Native plants from 2008-2023. The overall decline in the presence of EWM from the start of the management program shows the success of the program and that the population is currently being maintained at very low levels. The 2019 survey found great diversity but lower density, likely contributed to the weather patterns and a cooler September than the previous few years when increases in plant densities were found. As thought in 2019, the 2020 densities increased, with a warmer fall and earlier survey. In 2022, the number of sites surveyed increased with the additional points, and therefore the comparison of data is skewed and further reflection of numbers can be determined upon additional data being collected. The native plant population will naturally vary from year to year based on weather, water depth and many other factors; but has been maintained during the management of EWM. EWM data marked with purple dots was not collected by PLM, some data provided in Portage Lake LMP's, 2009-2012.

## Current Conditions in the Lake

### Aquatic Vegetation

Over the years, the presence of Eurasian watermilfoil and Curlyleaf pondweed undoubtedly reduced native plant diversity in the lake. Curlyleaf pondweed, although aggressive, naturally dies out mid-season and the increase in native plants after that die off is evident when looking at the early and late season surveys. With the new introduction of Starry stonewort, potential impact to native plant communities is increased with this aggressive species. Native plants currently have good diversity and density in the lake and though proper management, they can be maintained.

Native plant diversity will continue to be promoted in the lake. The native plant species in Portage Lake benefit the lake, performing such functions as stabilizing sediments and providing habitat for fish and other aquatic organisms. In general, native species cause few problems, compared with those caused by exotic plants. Plant diversity is key to maintaining and improving the overall ecological balance of Portage Lake.

All of the plants listed in Table 3 are native North American species except Eurasian watermilfoil, Curlyleaf pondweed, Starry stonewort, European frogbit, Purple loosestrife and Phragmites. These plants are non-indigenous aquatic nuisance species, i.e., plants from other places. These exotic plants cause considerably more problems than most native species. Eurasian watermilfoil and Starry stonewort can attain nuisance levels of growth at almost any time of year, whereas curly leaf pondweed completes its lifecycle and drops out of the water column by approximately the Fourth of July.

The native plant species benefit the lake, performing such functions as stabilizing sediments and providing habitat for fish and aquatic organisms. In general, native species cause few problems, compared with those caused by exotic plants. Three species commonly found in Portage Lake:

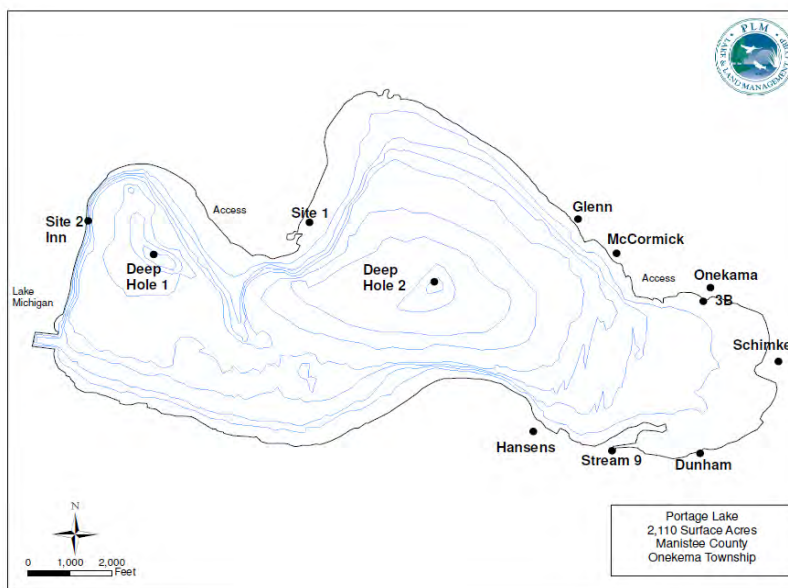


## Water Quality Monitoring

Water quality monitoring is a critical part of lake management. Water quality monitoring provides an ongoing record of conditions in a waterbody. Changes in water quality can indicate threats from sources such as failed or inadequate septic systems, agricultural and lawn runoff, burgeoning development and erosion from construction site. Prompt identification of threats to water quality makes it possible to remedy them before irreversible harm has been done. Riparian's enjoyment of the water resource and the value of their property depend on maintaining water quality. The following tables break down the parameters tested in the different locations in Portage Lake including the Deep Hole Basins (Basin 1 and Basin 2), Shoreline Sites (3A, 3B, 3D), Tributaries (Glen Creek, McCormick Creek, Onekama Creek, Schimke Creek, Dunham Creek, Stream #9, Hansen Creek) and Storm Drains (#2, #5, #6, #7).

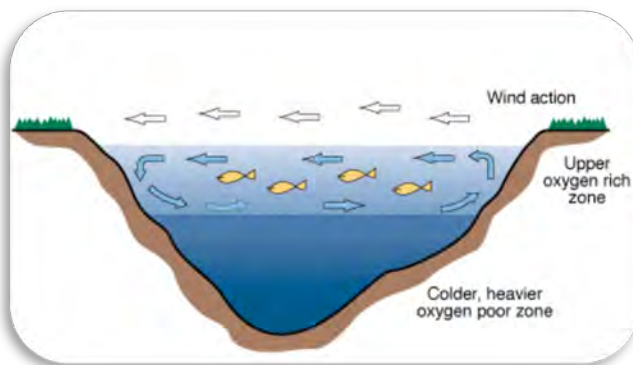
The graphs and tables below contain historical water quality data on Portage Lake that has been collected from numerous parties other than PLM. All information was made available to PLM via the Invasive Species Committee, on behalf of the Portage Lake Watershed Forever and Onekama Township and used with permission.

## Map 8: Portage Lake Water Quality Testing Locations



## Temperature and Dissolved Oxygen Profiles

Depth profiles of temperature and dissolved oxygen indicate that on June 7 the lake was already stratified. The surface levels were above saturation, 10.01 mg/L at Basin 1 and 9.98 mg/L at Basin 2 with shoreline ranging from 8.09 to 11.09 mg/L. At this time, Portage Lake had adequate dissolved oxygen all the way down to 60' in depth (12.73 mg/L in Basin 1 and 12.23 mg/L in Basin 2). On June 7, the lake was thermally stratified, with a thermocline at approximately 30' in Basin 1 and 20' in Basin 2 - similar to 2022 but much deeper than in 2021. The epilimnion (i.e., water above the thermocline) was well oxygenated, with oxygen concentrations at adequate levels to support a healthy fishery. Conditions in the hypolimnion (i.e., water below the thermocline) were also oxygenated.



On May 2, four storm drains (table 9) and seven tributaries (table 4) were tested coming into Portage Lake. The storm drains had similar DO levels to past years, including Drain #2 Zosel Park, which couldn't be sampled in 2021 due to water levels. All of the tributaries were well oxygenated ranging from 10.89 to 111.78 mg/L, slightly increased from 2022.

In late July, the lake was still strongly divided. The late July sampling was added into the program in 2015 and has been sampled since. Basin 1 was stratified and unlike many years when it has been anoxic at the bottom of the lake (void of oxygen), there was plenty of dissolved oxygen this year. Readings at 60' were 8.13 mg/L. The thermocline in Basin 1 was still at 30', similar to most recent years. Oxygen levels stayed more consistent all the way to the bottom than most years. Excellent news for Basin 1! In Basin 2, the surface waters had dissolved oxygen levels at 9.38 mg/L (similar to past years) and a thermocline at 30' with dissolved oxygen at 12.2 mg/L. Dissolved oxygen levels the last few years have been better in the July sampling, but in 2022 and 2023, levels were concerning again. Basin 2 deep sample had a reading of 1.83 mg/L (it was 0.3 mg/L in 2022) compared to 4.83 mg/L in 2020/ In 2023, oxygen levels below 50' were concerning, showing signs of anoxic water, whereas in 2022, levels below 40' were concerning. Having multiple deep holes is a benefit, as cold water fish can relocate between the deep holes.

During the fall, the lake was still stratified strongly in Basin 1 and not in Basin 2 during the sampling period. In years past, both mixing and no mixing has been found during this sampling period. The warmer Michigan fall seasons of the last few years will impact this greatly. Basin 1 was stratified and unlike the June and July readings, was anoxic below the thermocline (void of oxygen). DO levels ranged from 10 mg/L at the surface to 1.83 mg/L at the bottom, similar to 2022 and much lower than in 2021. In Basin 2, which is often already mixed at this time of year due to the fetch of the lake, was still strongly stratified at 30' during the sampling. Dissolved oxygen was present at and above the thermocline, but dropped drastically below the thermocline. Top to bottom dissolved oxygen ranged from 9.81 mg/L at the surface, 6.37 mg/L at the thermocline and 0.11 mg/L at the bottom.

Substantial oxygen demand leads to rapid deoxygenation of the hypolimnion upon thermal stratification in the spring and oxygen concentrations are frequently decreased in bottom waters during the summer. Depletion of oxygen beneath the thermocline during the summer is a common symptom of eutrophication, and often leads to elevated internal nutrient loading as the result of the release of phosphorus from hypolimnetic sediments. The 2019 sampling showed good oxygen levels present in the hypolimnion, compared to previous years, as did some of the 2020 readings. The 2021 and 2022 sampling wasn't as positive and overall in 2023, were better up until the September sampling.

## pH

pH describes the balance between acids and bases in the water. Neutral values of pH are desirable. Low pH values typically result either from the growth of bog vegetation (such as peat moss), acid precipitation ("acid rain"), or acid runoff (as in acid mine drainage). Excessive growth of certain plants and algae can raise pH values. A majority of Michigan lakes have pH values in the 7-9 range. Portage Lake pH was recorded in Basin 1 and Basin 2 in the June, July and September as well as in the tributaries and shoreline sites. The pH average in June was 8.5, in July 8.2 and in September averaged 8.04. The shoreline sampling was similar to the deep hole basins as was the tributary and storm drain sampling. This data is consistent with previous samplings.

## Total Alkalinity

Alkalinity, in addition to pH, measures the amount of dissolved bases and the balance of acids and bases in the water. Alkalinity specifically measures the concentration of carbonates and bicarbonates in the water. These compounds and other ions associated with them can make water "hard". High alkalinity lakes are hardwater lakes, while low alkalinity lakes are softwater lakes. Different kinds of plants, algae and other aquatic organisms live in hardwater versus softwater. Alkalinity is a basic characteristic of water and is neither inherently good nor bad. Total Alkalinity was measured in June, July and September in both Basin 1 and Basin 2. The average sampling between both basins in June was 123 mg/L with a range of 118-126 mg/L. The July samples were similar with an average of 116 mg/L with a range of 111 - 119 mg/L. The September samples were similar with an average of 116 mg/L with a range of 105 - 129 mg/L. All samplings show the lake to be considered "soft" with readings under 150 mg/L, a typical threshold of a hardwater lake. Overall, the 2023 readings on the lake are similar than previous readings, but overall show consistent softwater data for Portage Lake.

## Conductivity and Total Dissolved Solids

Conductivity and Total Dissolved Solids (TDS) measure the total amount of material dissolved in the water. Higher values indicate potentially rich, more productive water, whereas lower values indicate potentially clean, less productive water. (If nutrient pollution is occurring, the total phosphorus concentration is a much better indicator of potential productivity.) The combined readings of TDS on Portage Lake ranged from June readings averaging 291 ug/L, July averages of 292 ug/L to September readings averaging 292 ug/L. (Shoreline samplings were very similar to deep basins). The tributary sampling was slightly higher, averaging 335 ug/L in May and 289 ug/L in September. Overall, these averages classify the overall TDS of Portage Lake as Low Dissolved material. The conductivity readings on Portage Lake are slightly lower than the TDS readings with the basin average of 189 uS/cm in June, 290 uS/cm in late July and 190 uS/cm in September. (uS/cm=microsiemens per centimeter). Higher levels can likely be due to runoff, which is also supported by the slightly higher conductivity readings from the tributaries (May average Conductivity reading is 218 uS/cm while September average is 234 uS/cm). Tributary readings are similar to past readings.

## Oxidative Reduction Potential (ORP)

The oxidative reduction potential of a lake measures the ability of the water to serve as potential oxidizers and indicates the degree of reductants present within the water (the ability to gain or lose electrons). The reduction potential measurement has proven useful as an analytical tool in monitoring changes in a system rather than determining their absolute value. Like pH, the redox potential represents an intensity factor. It does not characterize the capacity of the system for oxidation or reduction; in much the same way that pH does not characterize the buffering capacity. Generally speaking, higher ORP values, the healthier the lake. As a lake stratifies and oxygen levels decrease towards the bottom of the lake, ORP values will decrease even in a healthy lake due to the lack of oxygen. This is because there are many bacteria working in the sediments to decompose the material and they use up the available oxygen. ORP is measured in addition to pH and dissolved oxygen as it can provide additional information of the water quality and degree of pollution, if present. High ORP values indicate high levels of oxygen in the water and that bacteria that decompose the dead matter can work more effectively.



The deep basins ranged from 61 - 126 mV in June sampling to 69 - 113 mV in the late July sampling to 38 - 123 mV in the end of summer/fall sampling, indicating oxidized conditions. Tributaries and shoreline samples had similar results to past years.

## Turbidity

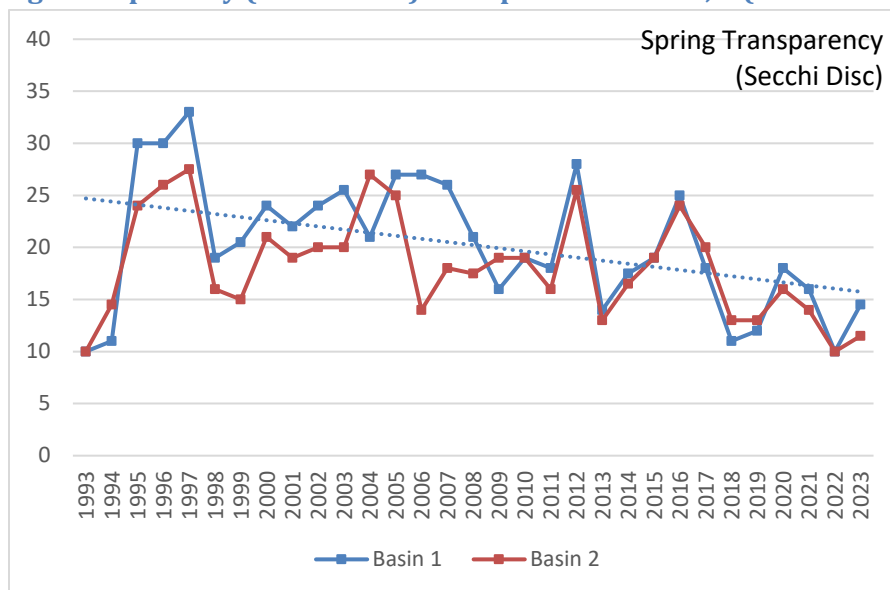
Turbidity is a measure of the clarity of the water, specifically from the presence of suspended particles in the water. Turbidity will typically increase as the suspended particles in the water increase, lowering clarity of the water. Turbidity may be caused by a variety of factors from the bottom sediments, erosion, algae production, and runoff and possibly from fish species such as carp. Suspended particles can capture heat from the sun raising water temperature as well (often witnessed in shallow waters). Turbidity readings on Portage Lake ranged from 0.51 - 1 NTU's in June to 0.45 -1.77 (at the bottom) NTU's in late July to 0.54 - 7.5 NTU's in September. This outlier result is likely due to the bottom sediments getting disrupted during sampling and should be thrown out based on historical data. Shoreline sampling ranged from 0.92 - 1.48 NTU's in June, 0.38 - 1.11 NTU's in late July and 0.74 - 0.79 NTU's in September, all decreased from 2022! The 2023 turbidity readings are overall lower than previous years, indicating potentially improved clarity. The World Health Organization (WHO) requires drinking water be less than 5 NTU's, but recreational water can be significantly higher. Overall, the turbidity readings on Portage Lake are within safe drinking water standards (this does not mean that the lake water should be used for drinking as it is not filtered).

## Secchi Disk Depth

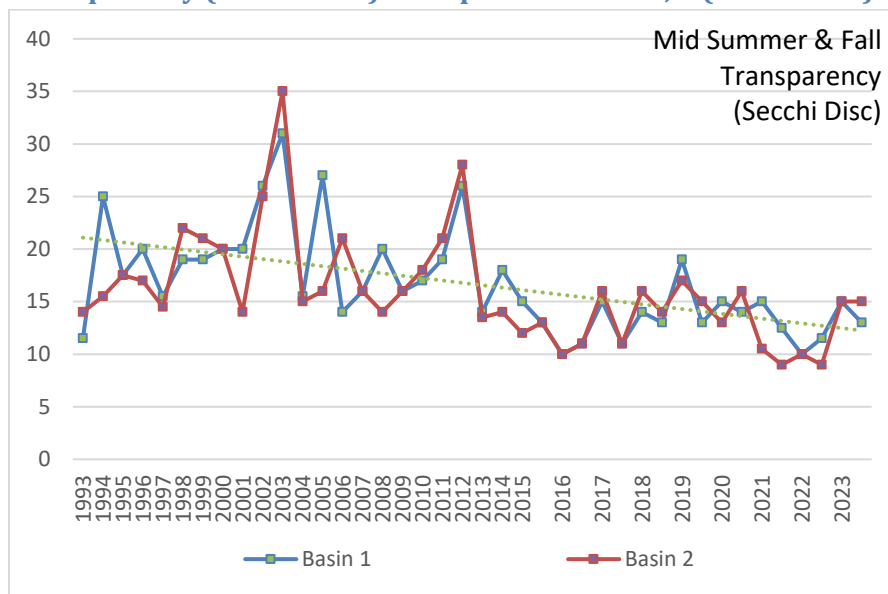
The Secchi disk depth is another measure of water clarity, determined by measuring the depth to which a black and white disk can be seen from the surface. (Larger numbers represent greater water clarity.) In June, Basin 1 was 14.5' and Basin 2 11.5'. Clarity improved some into summer, with the Secchi disk depth of 15' in late July in Basin 1 and 15' in Basin 2. Reading were 13' in Basin 1 and Basin 2 was at 15' in September. Generally speaking these results are slightly above the last few years. Water clarity can fluctuate from week to week depending on several environmental factors such as rain fall & algal production. Basin 2 may likely be more affected by the fetch of the lake, therefore could likely have a lower Secchi disk reading. These clarity readings show that sunlight is available for plant and algae throughout a good portion of the lake. Reviewing trendline data for clarity, Portage Lake clarity is decreasing.



**Graph 5: Spring Transparency (Secchi Disk) – Deep Hole Basins 1, 2 (1993-2023)**



**Graph 6: Fall Transparency (Secchi Disk) – Deep Hole Basins 1, 2 (1993-2023)**



### Total Phosphorus

Total phosphorus measures the total amount of phosphorus in the water. Phosphorus is an important plant nutrient (i.e., fertilizer) and the nutrient most likely to limit algal growth. Phosphorus levels are not only related to internal loading of nutrients but also from external sources. Elevated phosphorus inputs to lakes caused by human activities are a major cause of cultural eutrophication. Readings above 10 µg/L are considered slightly enriched while readings over 30 µg/L are considered enriched.

Total phosphorus concentrations in June in Basin 1 were 8 µg/L at the lake surface, and 8 µg/L at thermocline depth and 8 µg/L in the bottom water. In Basin 2, 8 µg/L at the lake surface, and 8 µg/L at thermocline depth and 8 µg/L in the bottom water. The June shoreline readings from sites Cove was 8 µg/L, 3B was 8 µg/L and the Inn was 8 µg/L.

The tributary TP readings in May ranged from 8 - 29 µg/L. similar to 2022 data but not as aligned with historic data. Storm Drain TP May readings were all 8 µg/L, much below previous results. In the past, higher TP readings have been found coming from the tributaries and storm drains.

Late July Total Phosphorus concentrations were 8 µg/L at the surface, 8 µg/L in the thermocline and 8 µg/L at bottom in both basin. No increases from the June testing and readings are still well below levels of concern. This indicates that the TP is consistent from top to bottom and even with a void of dissolved oxygen, TP levels are not elevated, indicating no internal loading.

End of summer Total Phosphorus concentrations were: Basin 1 8 µg/L at the surface, 8 µg/L at 30' and 8 µg/L at bottom, same results as Basin 2. These samples are considered relatively low.

In 2017, levels were increased from 2016, but in 2018, levels had decreased and were back similarly to 2016 concentrations. Overall, the sampling in 2019, 2020, 2021, 2022 and 2023 are all similar, with very few fluctuations overall. This is a positive sign for Portage Lake.

In years past, tributary sampling showed Stream #9 was generally the highest of the reading; however, in recent years, this is not always been the case. In 2023, the tributaries were similar in the spring and fall and are classified as enriched. Historically, the tributary samplings show higher levels of TP compared to the basins. Stream #9, which has had additional tributary upstream testing completed upstream in the past, did not have enough flow or water present in the creek, to collect adequate samples in 2021 or 2022. Stream #9 fall sampling, came back very high at 202 µg/L, and was likely contamination during

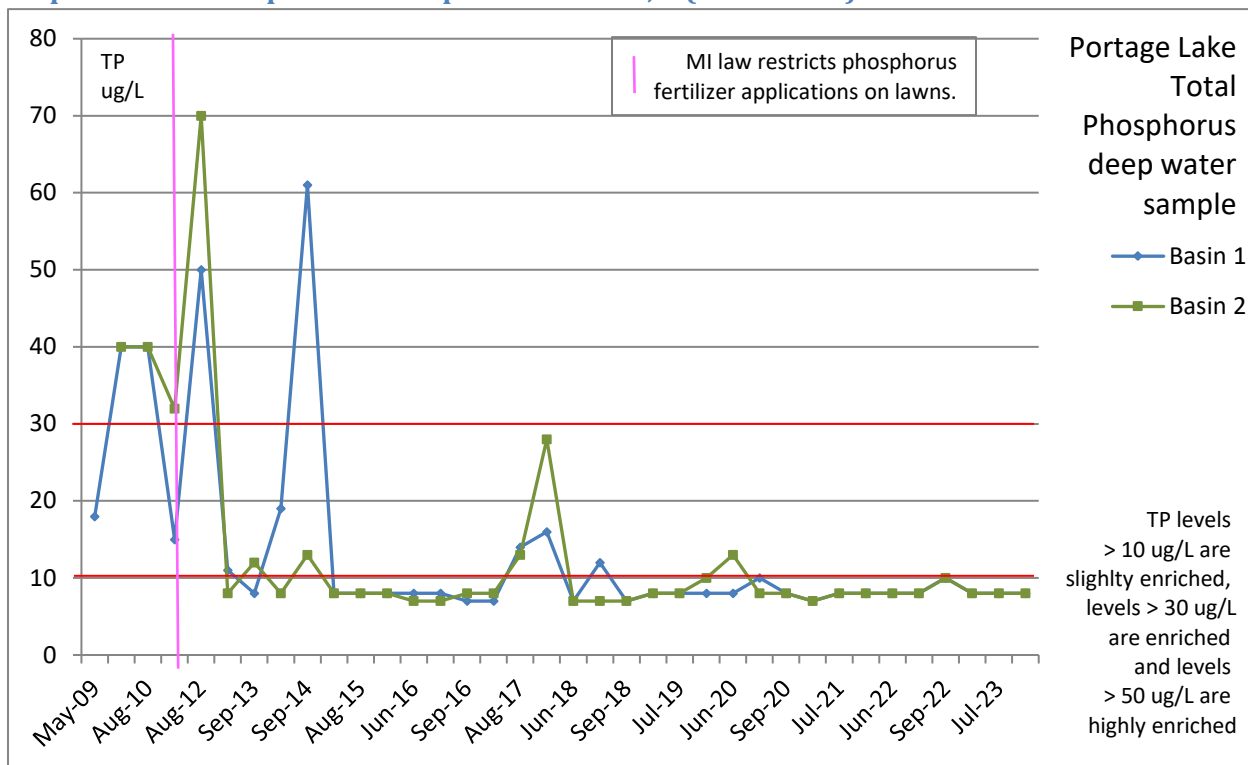
sampling, based on the lack of flow from this area. As an extreme outlier, this result has been removed from some of the graphs below.

Overall readings show that higher phosphorus concentrations are found in the tributaries and that internal loading was not a contributing factor to TP in 2023, same as in 2022. The 2023 data shows the TP had stayed low in both Basins, similar to what was found in 2019-2022, and still well below historical data. Past data has shown that Basin 2 is routinely higher in concentrations than Basin 1, which is expected due to the fetch and potential lack of oxygen of Portage Lake; however, the last few years of data has shown a declining trend.

See below graphs of TP concentrations from 2023. Basin 1 and 2 are graphed using data previously collected on Portage Lake (via various sources, provided to PLM via the Portage Lake Watershed Forever website with permission from the committee).

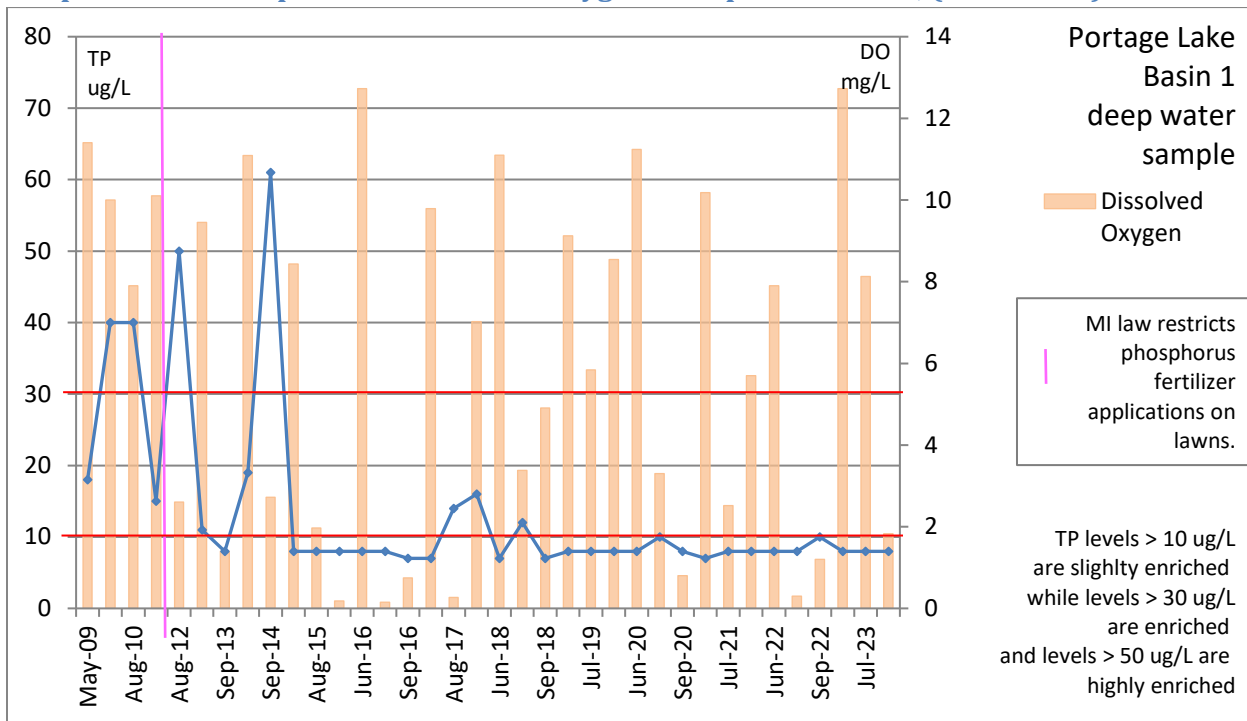
Beginning January 1, 2012, Michigan law restricts phosphorus fertilizer applications on lawns. This is noted in graphs as an event to track Phosphorus trends post ban.

**Graph 7: Total Phosphorus – Deep Hole Basins 1, 2 (2009-2023)**



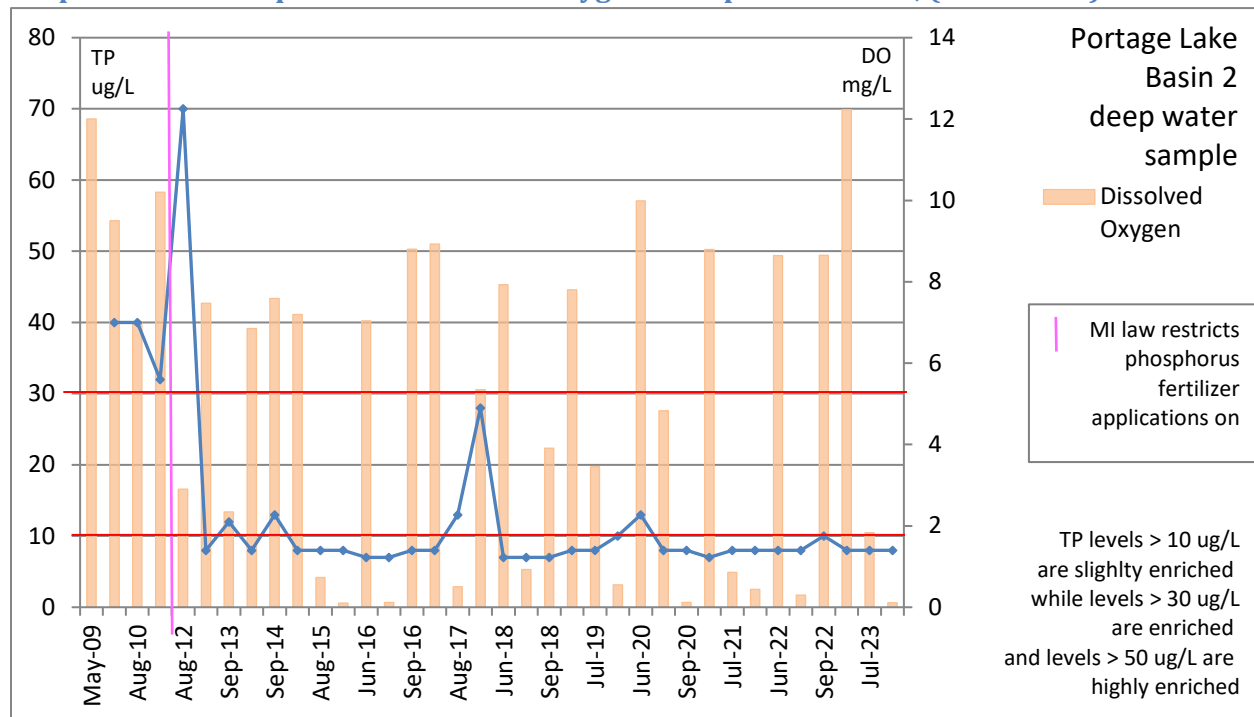
There have been a few spikes in TP over time but generally speaking, the bottom waters of Portage Lake are not classified enriched based on the sampling in recent years. Note: Basin 2 May 2009 sample is not graphed as the reading of 340 ug/L is an extreme outlier and not reflective of the overall lake results.

**Graph 8: Total Phosphorus & Dissolved Oxygen – Deep Hole Basin 1, (2009-2023)**



Looking at the trendlines, Basin 1 has higher DO levels during mid to late summer months than Basin 2. Higher DO levels are better. Internal loading (spikes in TP) can take place when DO levels decrease. There is no indication of internal loading taking place.

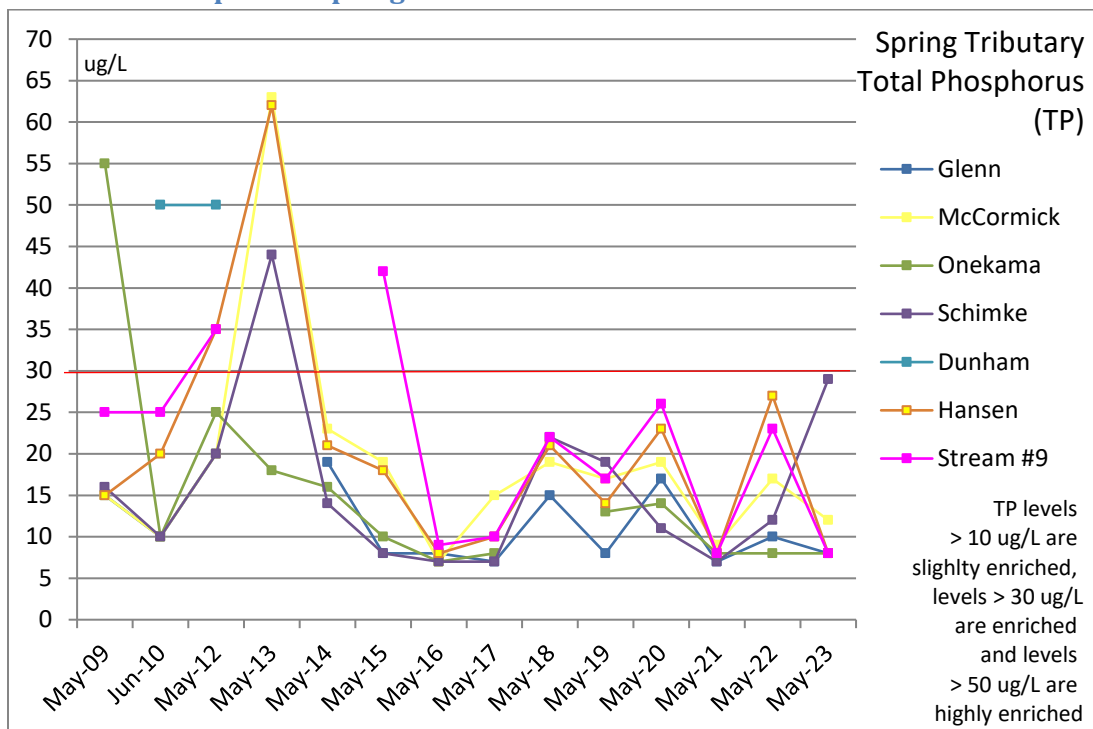
**Graph 9: Total Phosphorus & Dissolved Oxygen – Deep Hole Basin 2, (2009-2023)**



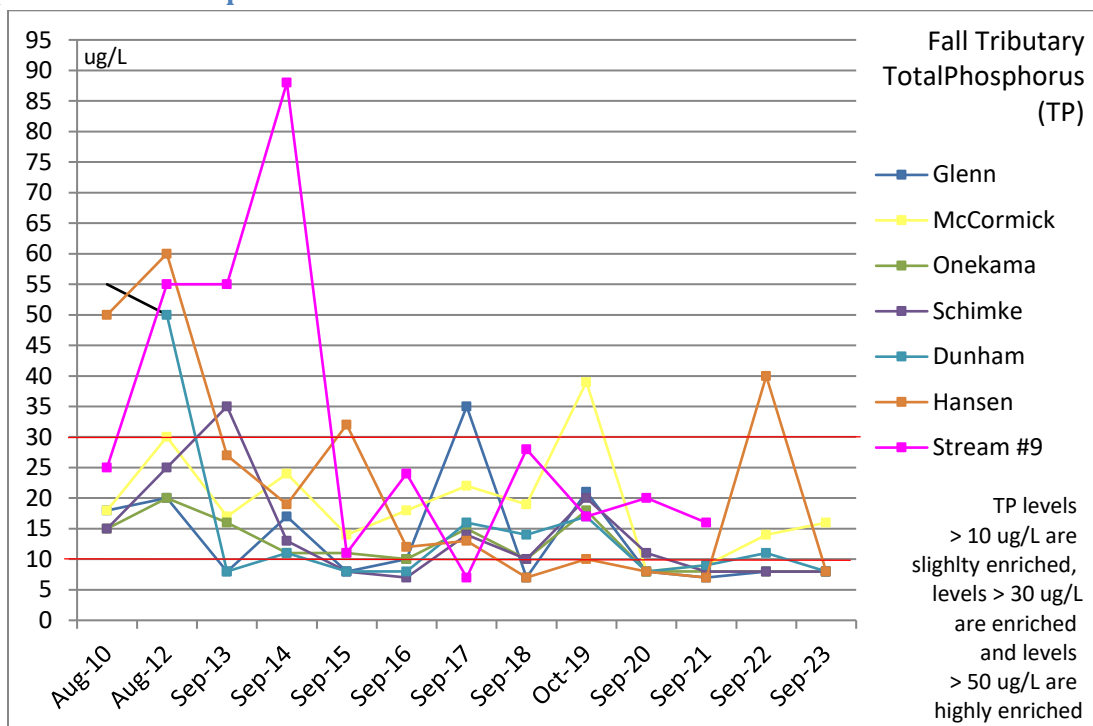
Looking at the trendline data, DO has consistency declined in the mid to late summer months, leading to anoxic conditions. However, TP levels have stayed low; which is an excellent sign. There is no indication of internal loading in Basin 2.



**Graph 10: Total Phosphorus Spring – Tributaries 2009-2023**

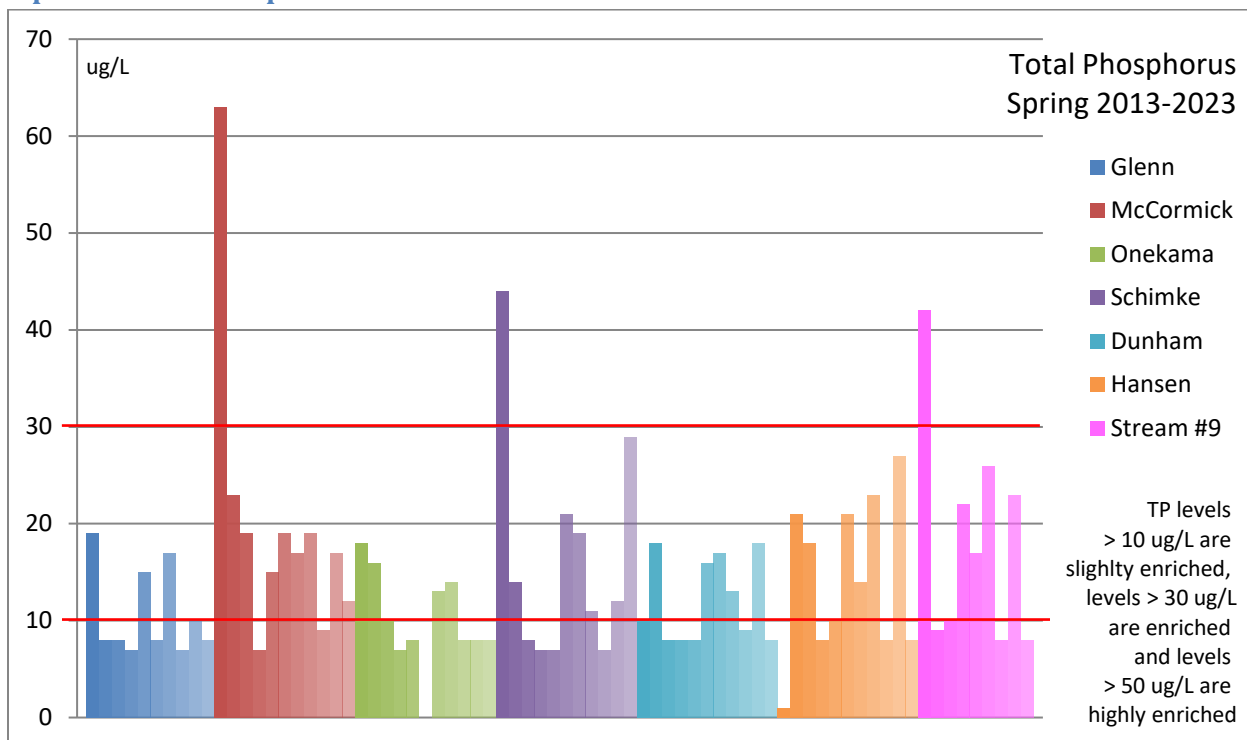


**Graph 11: Total Phosphorus Fall – Tributaries 2009-2023**



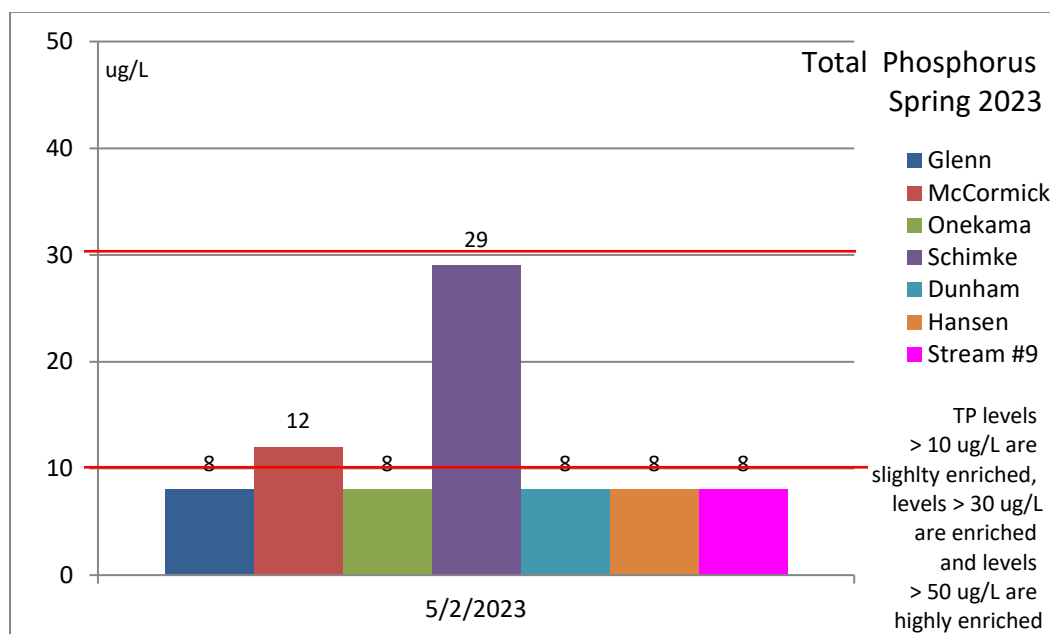
Graphs 10 and 11 indicate there are fluctuations between the creeks over time. See below graphs to show the 2023 comparisons between the creeks. Glenn Creek May 2013 and Stream #9 2023 samples were removed from this graph as an extreme outliers, likely from a contaminated sample. Stream #9 was not sampled in 2013.

**Graph 12: Total Phosphorus - Tributaries 2013-2023**



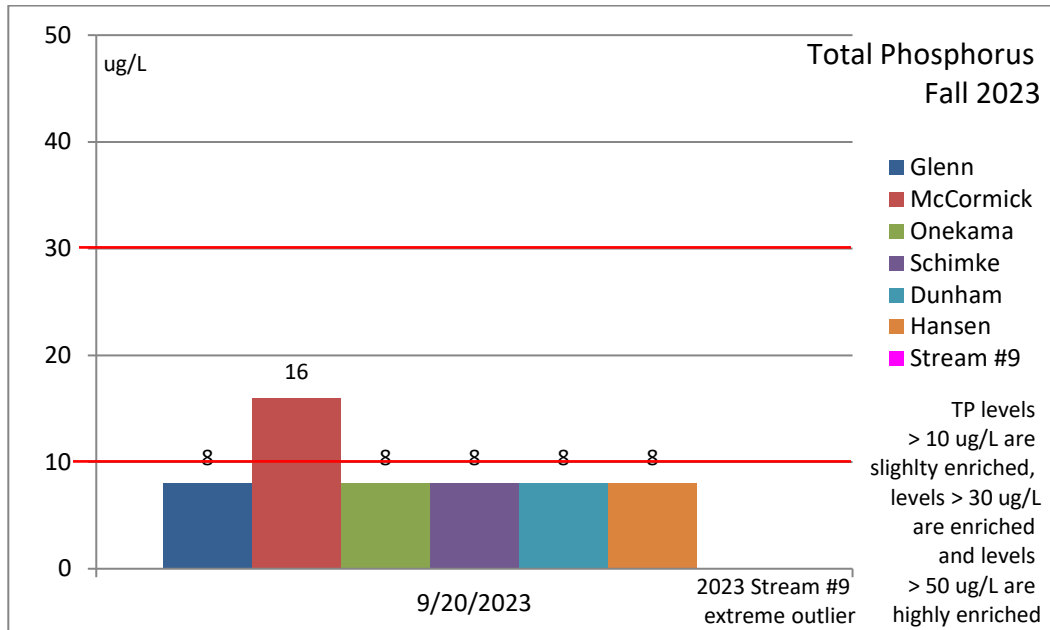
Graph 12 shows the fluctuation in TP in each Tributary over time. Historically, the tributaries have been and remain a point source of pollution for Portage Lake. Stream #9

**Graph 13: Total Phosphorus - Tributaries May 2023**



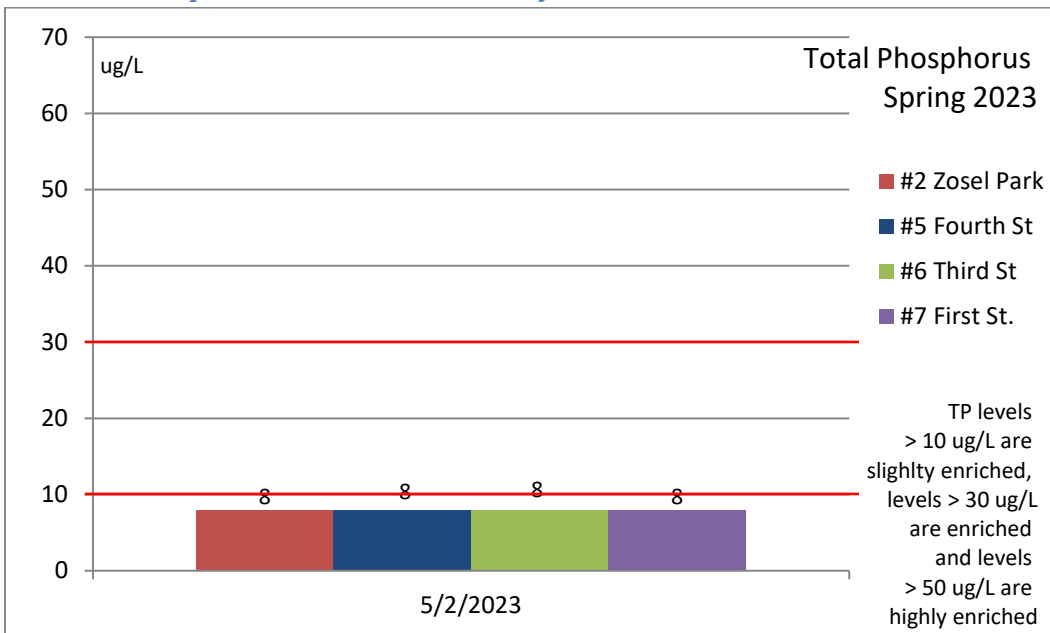
Graph 13 includes the Total Phosphorus from each Tributary tested in 2023, showing overall decrease from 2022!

**Graph 14: Total Phosphorus – Tributaries End of Summer 2023**



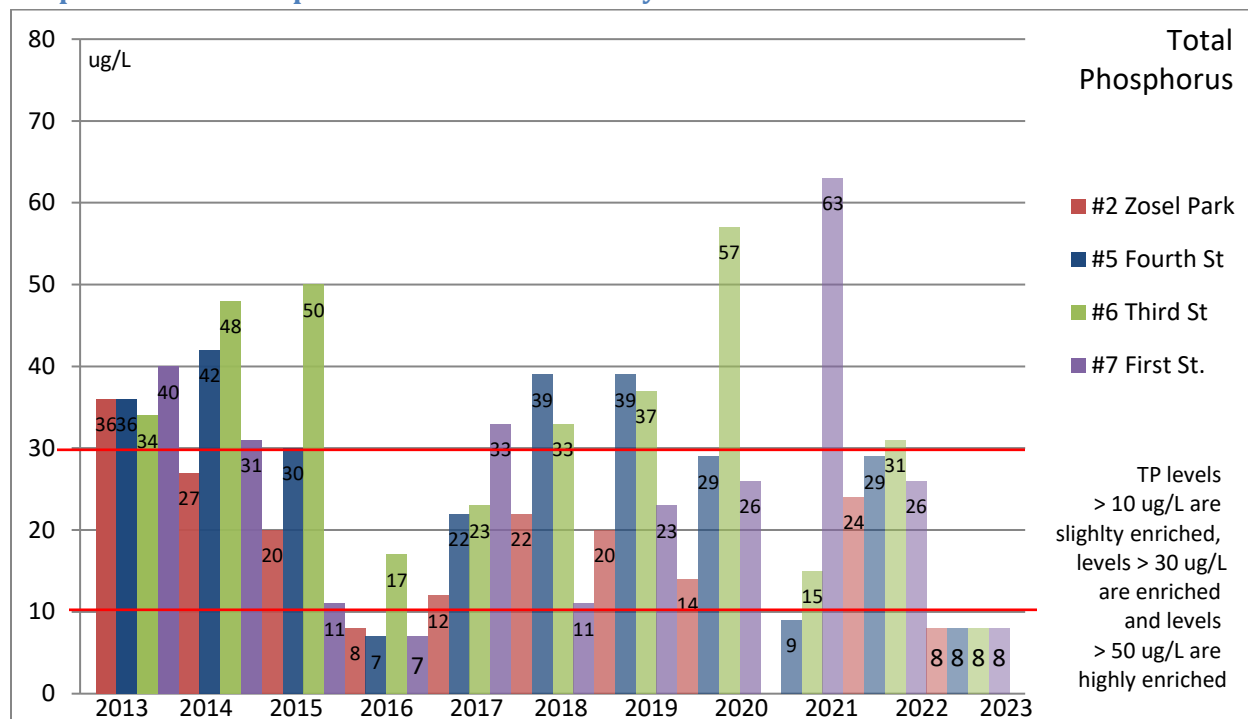
Graph 14 illustrates the TP in the fall sampling, which generally speaking is lower than the spring sampling. Rainfall and flow are traditionally higher in the spring, correlating with increased phosphorus inputs.

**Graph 15: Total Phosphorus – Storm Drains May 2023**



As the graph illustrates, there is little fluctuation between the TP in the different storm drains around Portage Lake and overall and unlike most years were samples are very enriched, 2023 samples were very low.

**Graph 16: Total Phosphorus – Storm Drains May 2013 - 2023**



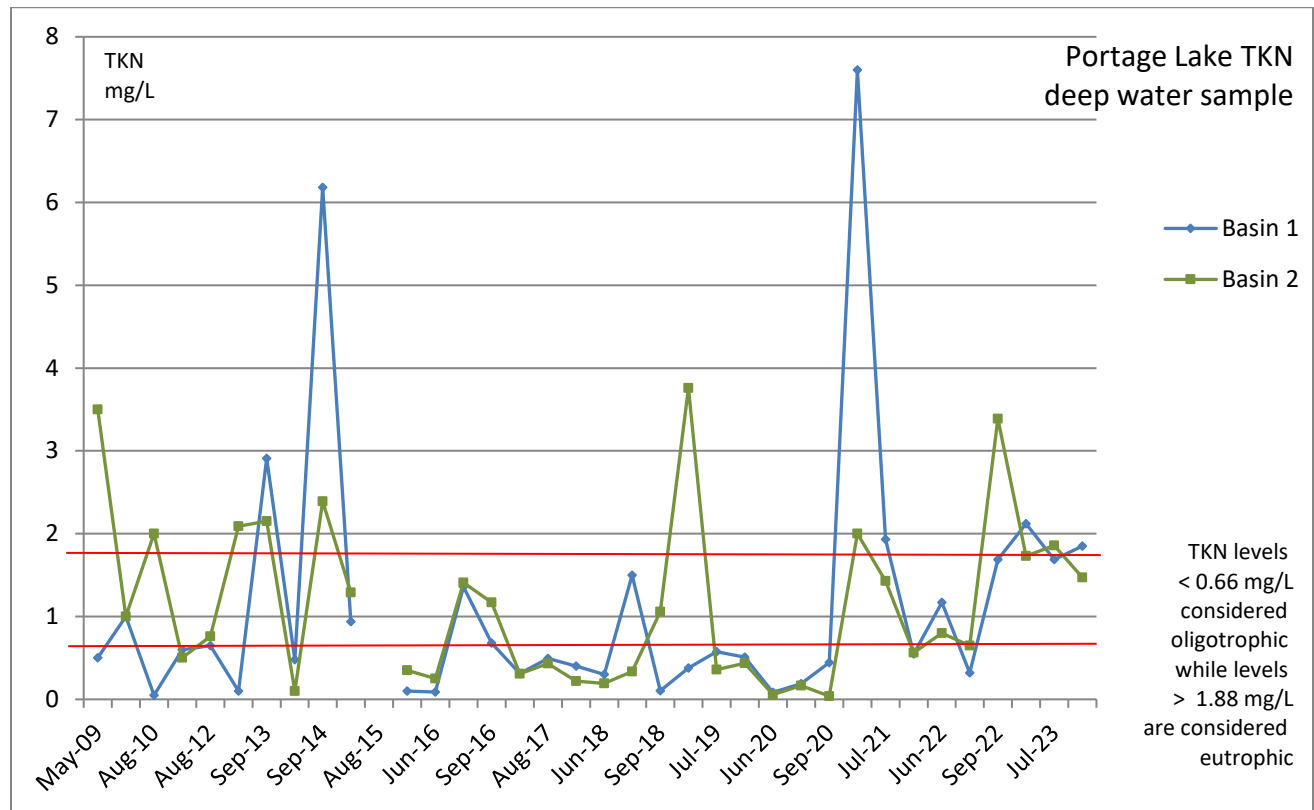
Graph 16 shows the storm drain TP over time and most of the TP concentrations are considered enriched. These sites are a key introduction point of Phosphorus into Portage Lake. Historical data shows a decline in TP in 2016 and 2023; but that was short lived in the past and additional testing will show if that is a trend

### Total Kjeldahl Nitrogen (TKN)

TKN measures the total organic amount of nitrogen (nitrate and nitrite) and ammonia in the water. Nitrogen is the plant nutrient (i.e. fertilizer) most likely to control the amount of rooted plant growth in lakes and ponds. Most Midwestern lakes have more nitrogen and more rooted plant growth than is desirable, so lower values are generally considered better. The major sources of nitrogen in lakes are from agriculture (animal waste, fertilizer) and atmospheric emissions (fossil fuel). Lakes with a TKN value of 0.66 mg/L or less are typically classified as oligotrophic lakes (having fewer nutrients, less productivity). Lakes with TKN values above 1.88 mg/L may be classified as eutrophic (highly productive and nutrient rich). Nitrates do not accumulate very much in the bottom waters during the summer because when nitrate is void of oxygen it turns into ammonia. Therefore, ammonia testing is an excellent way to determine internal loading of nitrogen. The TKN readings on Portage Lake at Basins 1 and 2 in June ranged from 1.97 mg/L to 3.62 mg/L, in late July from 1.67 mg/L to 2.46 mg/L and in September from 1.47 mg/L - 2.59 mg/L between both basins. The shoreline samples ranged from 1.85 mg/L- 3.26 throughout the summer. All of these readings are slightly higher than previous years and dissolved oxygen was present, for the most part in 2023. These levels classify the lake was eutrophic and would indicate a lake that could have substantial rooted plant growth.

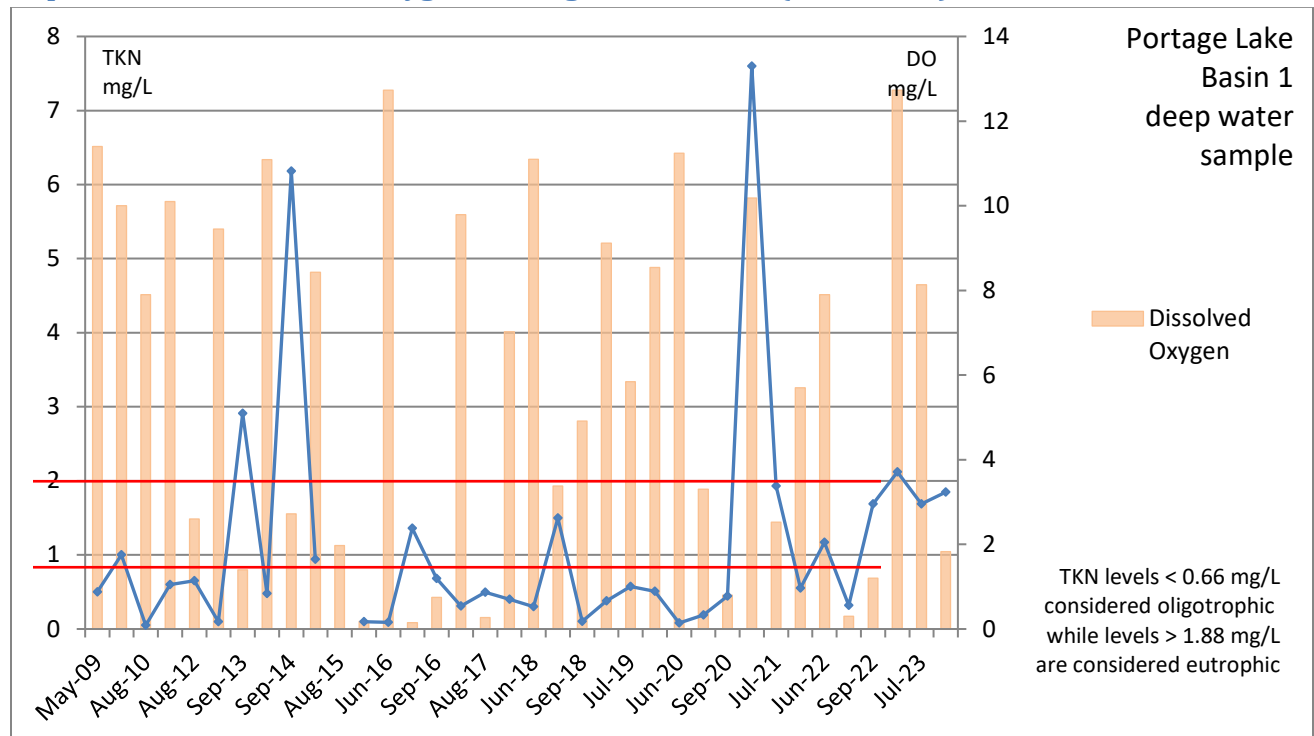


**Graph 17: TKN – Portage Lake Basins 1, 2 (2009-2023)**

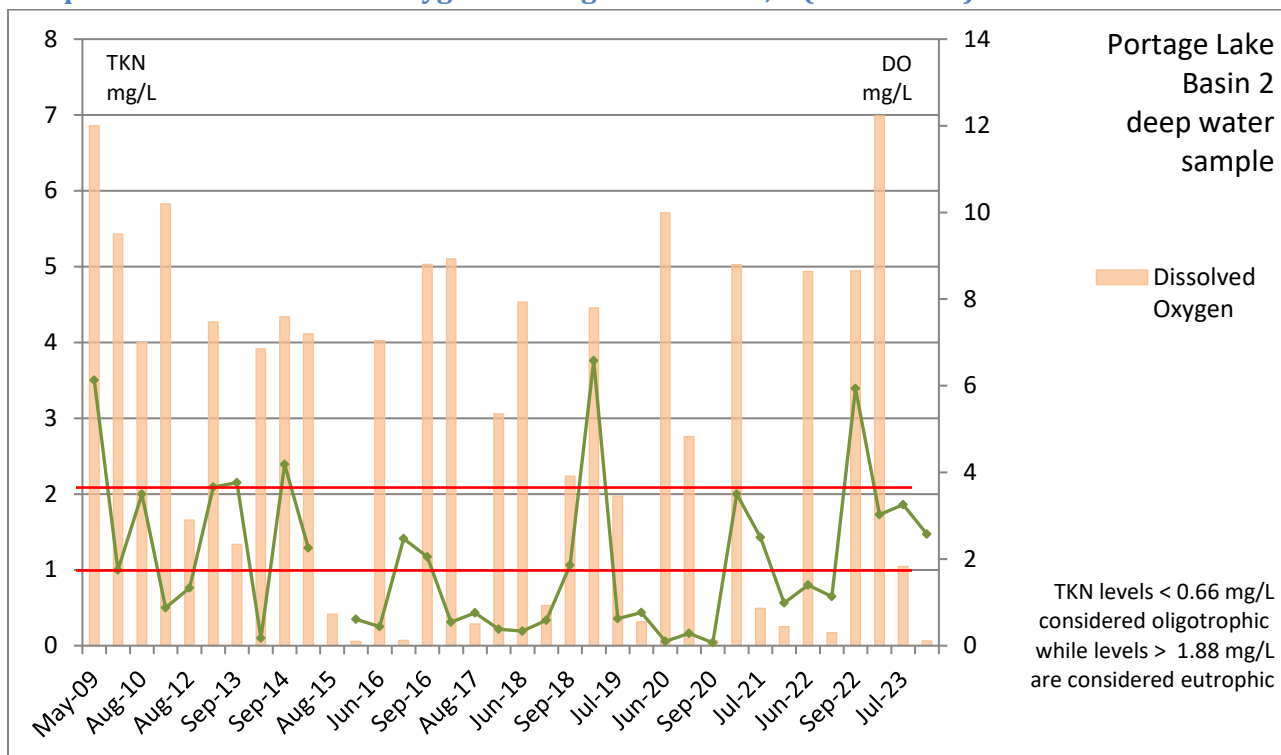


As the above graph illustrates, the TKN concentrations on Portage Lake have fluctuated some in recent years with some large spikes. A larger spike (or outlier) in August 2015 is not graphed. 2022 and 2023 sampling shows elevated levels and additional sampling in 2024 is highly recommended to determine if this is a trend that continues. The below graphs illustrates Basin 1 in more detail and that the spike in 2022 and 2023 are not correlated to DO levels.

**Graph 18: TKN & Dissolved Oxygen– Portage Lake Basin 1 (2009-2019)**



**Graph 19: TKN & Dissolved Oxygen– Portage Lake Basin, 2 (2009-2023)**



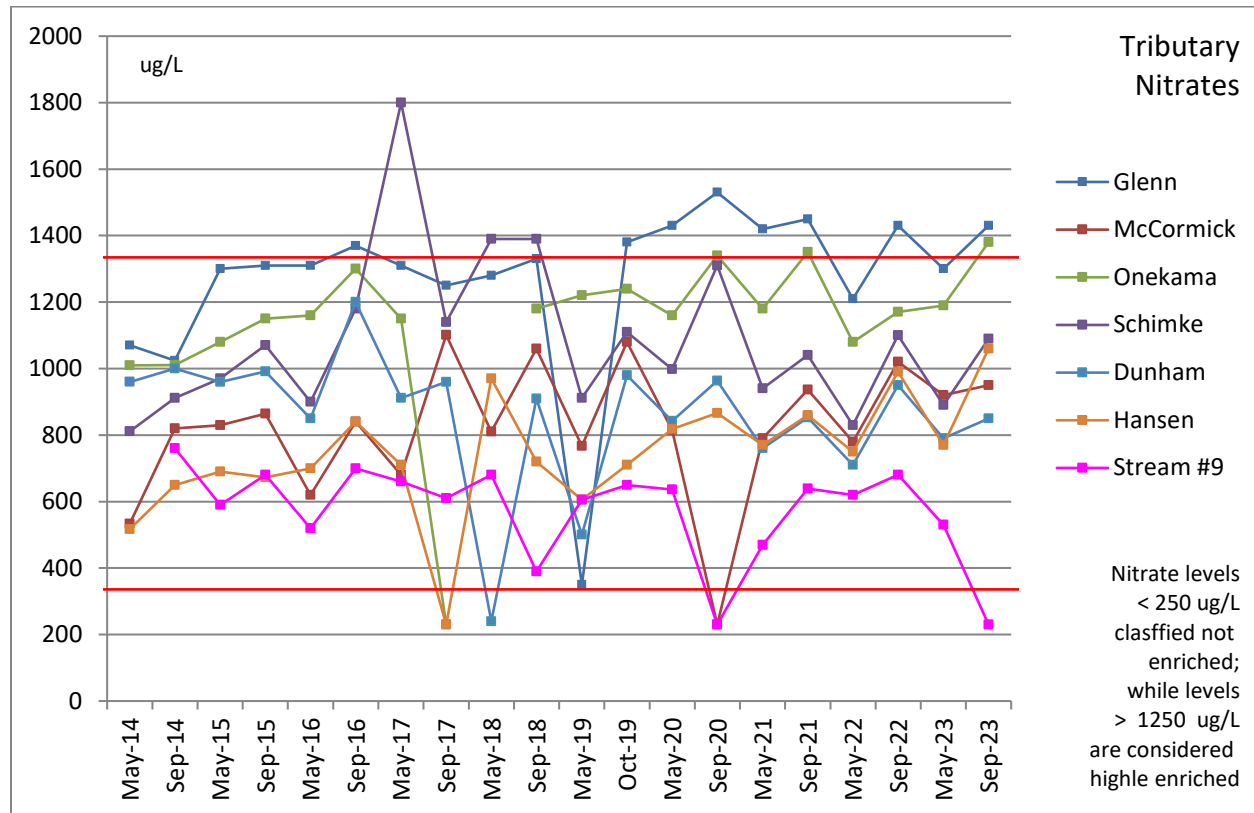
Basin 2 has followed a similar pattern to Basin 1, despite low DO levels.

## Nitrates

Nitrates measure the total amount of in-organic nitrogen in the water. Again, nitrogen is an important plant nutrient (i.e., fertilizer) and the nutrient most likely to limit the growth of rooted plants. Most Midwestern lakes have more nitrogen and more rooted plant growth than is desirable, so lower values are generally considered better. Nitrate levels under 250  $\mu\text{g N/L}$  are considered not enriched while readings between 250-750  $\mu\text{g N/L}$  are slightly enriched, readings from 750-1250  $\mu\text{g N/L}$  are enriched and readings over 1250  $\mu\text{g N/L}$  are highly enriched. The sampling in both Basins were consistent this year. The June concentrations of nitrates in Basin 1 and 2 were ranged from 230  $\mu\text{g N/L}$  to 500  $\mu\text{g N/L}$ . The late July readings ranged from 230  $\mu\text{g N/L}$  to 400  $\mu\text{g N/L}$  and September concentrations of nitrates were 230  $\mu\text{g N/L}$  to 280  $\mu\text{g N/L}$  throughout the water column. Nitrates in the tributaries ranged from 530  $\mu\text{g N/}$  to 1300  $\mu\text{g N/L}$  in the spring and from 230  $\mu\text{g N/}$  to 1430  $\mu\text{g N/L}$  in September, which were similar to last season. Nitrates are typically higher in the spring when the water is colder because the bacteria needed to digest the nitrates are not as productive in cooler temperatures. Nitrates will often decrease over the spring and be slightly less in the lake by the end of the summer. Based on the higher levels of nitrates observed in inlets (Tributaries and Storm Drains) in May and September, loading of the lake appears to be mainly from external sources. External sources for nitrate pollution are agricultural practices (manure, fertilizer), animal feedlots, urban runoff and municipal wastewater runoff. Based on the location of Portage Lake and the makeup of the surrounding watershed, nitrate enrichment is most likely coming from agricultural practices that have leached into the groundwater and animal feedlots. Nitrates did not accumulate very much in the bottom waters during the summer. The nitrates did not accumulate because when nitrate is void of oxygen it turns into ammonia. Therefore, ammonia testing is a better way to determine internal loading of nitrogen.

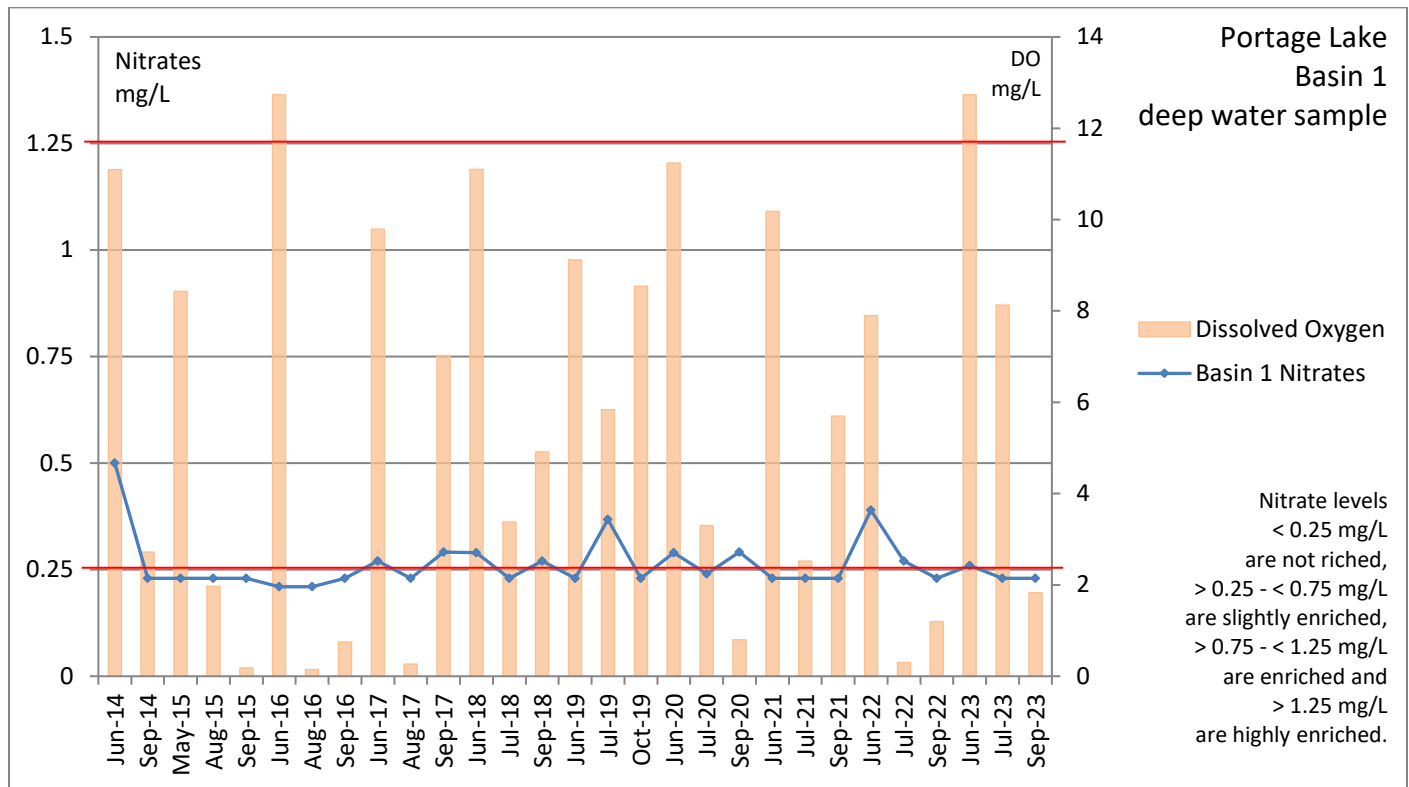
These samples show that the lake (at the time of sampling) may be Phosphorus limited. Phosphorus limited lakes tend to have a TN:TP >15. In 2023, the average TN was 263  $\mu\text{g/L}$  in the basins and the TP 8.0  $\mu\text{g/L}$ , giving a TN:TP of 32. This reading indicates Phosphorus may be the limiting nutrient. This is common in most lakes in this geographical area.

**Graph 20: Nitrates- Portage Lake Tributaries**

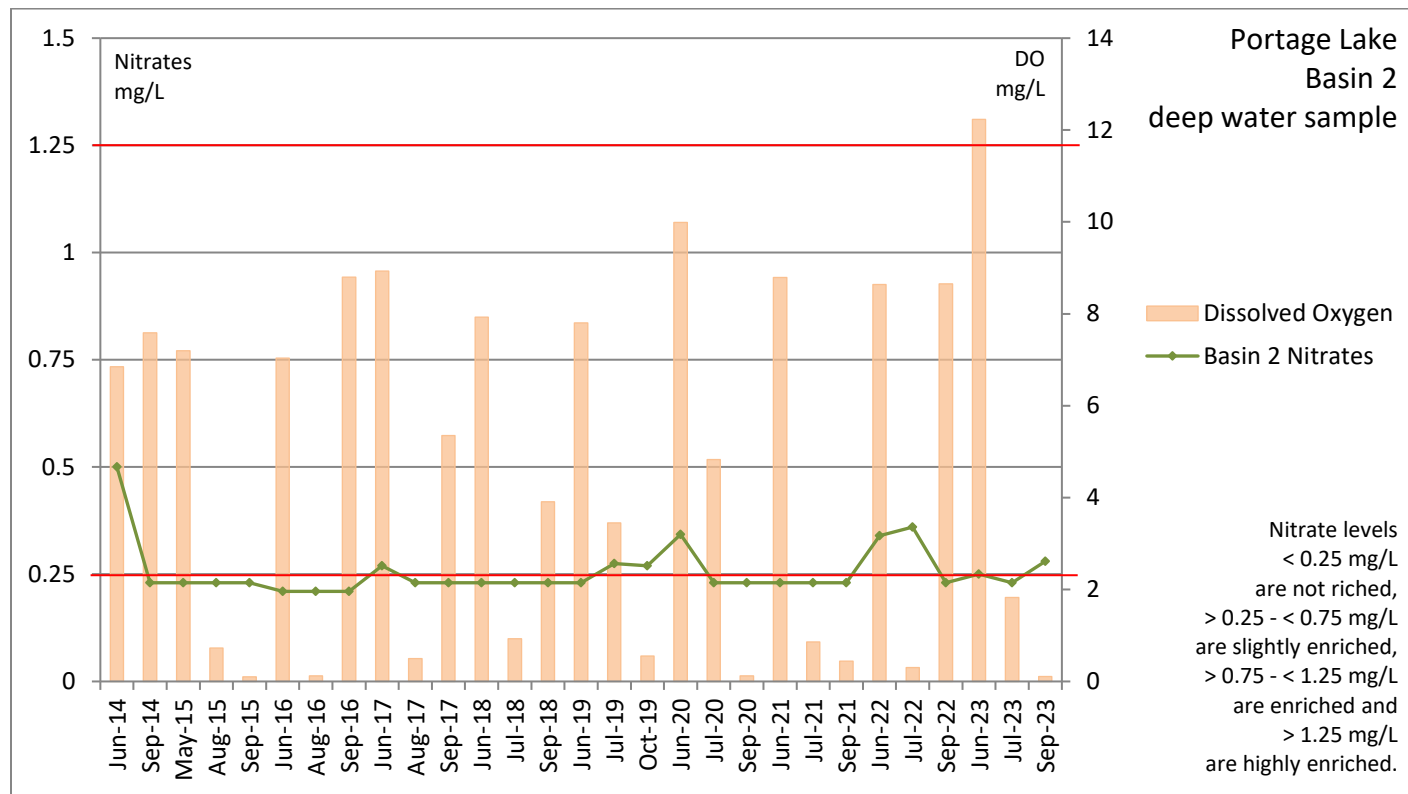


Graph 20 shows the nitrate concentrations in the Portage Lake Tributaries range from slightly enriched to highly enriched. It is recommended to continue testing.

**Graph 21: Portage Lake Nitrates Basin 1 (2014-2023)**



**Graph 22: Portage Lake Nitrates Basin 2 (2014-2023)**



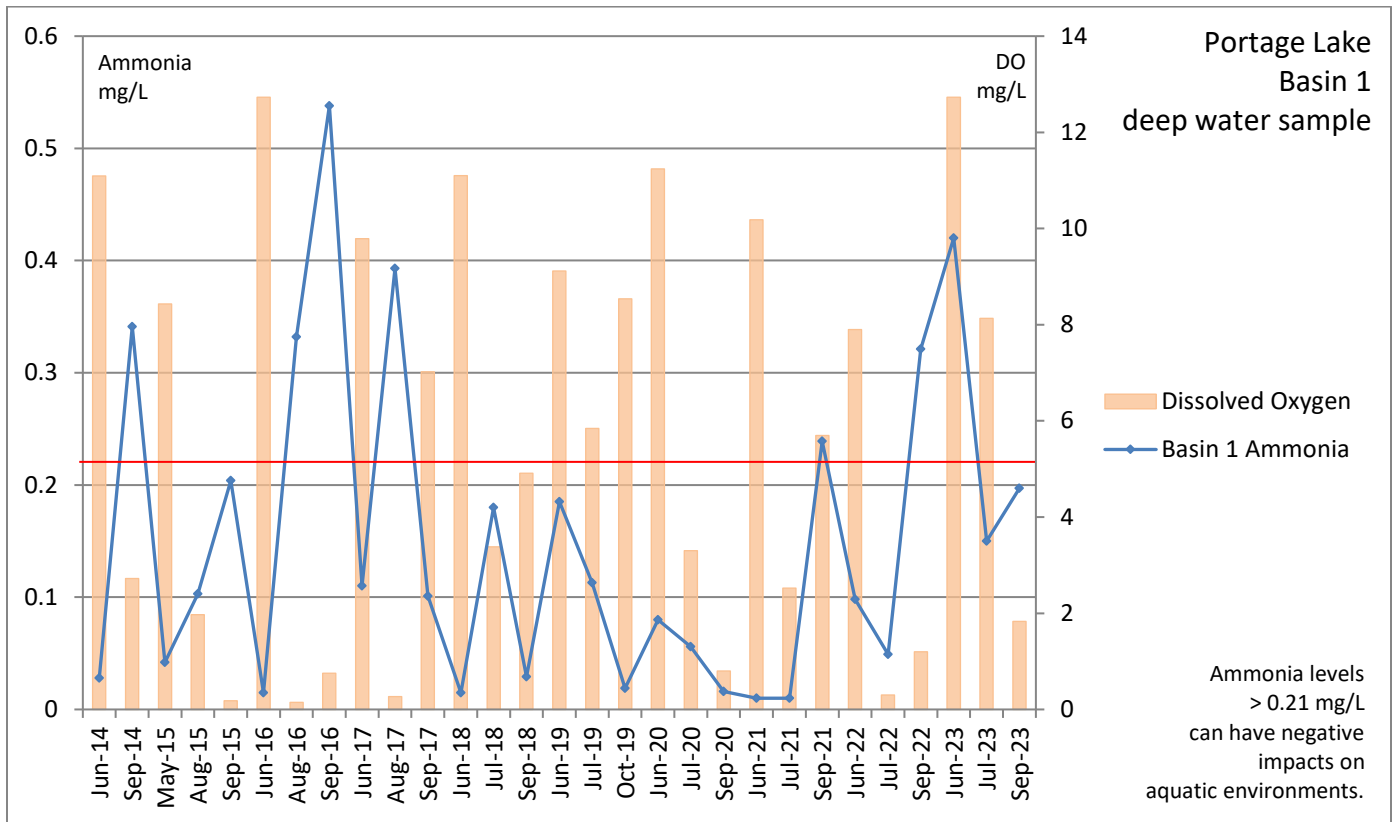
Graphs 21 and 22 show the DO levels with the nitrates in both Basins. Nitrate levels do not increase with decreased DO levels.

## Ammonia

Ammonia is a form of nitrogen found in organic materials, sewage, and many fertilizers. It is the first form of nitrogen released when organic matter decays. Also, when ammonia degrades it consumes oxygen, which worsens already existing anaerobic conditions. However, ammonia can be used by most aquatic plants and is therefore an important nutrient. When oxygen is present in a lake ecosystem, ammonia will convert to nitrates. Ammonia is toxic to fish at relatively low concentrations in pH-neutral or alkaline water. In fish, ammonia affects hatching and growth rates, and can cause changes in tissues of gills, the liver and the kidneys. Ammonia concentrations below 1 mg/L (or 1000 ug/L) are generally considered suitable for healthy fisheries; however, Ammonia concentrations can have impacts on aquatic organisms at lower levels. It is important to review all ammonia concentrations based on the specific lake type, temperature, pH and dissolved oxygen. Michigan EGLE includes standards in part 4 (Water Resources Protection, Water Quality Standards) that ammonia shouldn't exceeded the Aquatic Maximum Value (AMV) threshold of 0.21 mg/L (210 ug/L) in which they feel negative impacts can occur in aquatic communities. Further, the Final Acute Value (FAV) shouldn't exceed a concentration of 0.42 mg/L (or 420 ug/L) where short term exposure can lead to negative impacts on aquatic organisms. Ammonia concentrations usually do not become elevated until water is void of oxygen and the nitrates are converted. Therefore, concentrations of Ammonia do not become elevated until anaerobic conditions are present, typically mid-summer. The concentration of ammonia at the Basin 1 in June was 0.015 mg/L (or 15 ug/L) at the surface and 0.042 mg/L (42 ug/L) at the bottom while in Basin 2 it was 0.015 mg/L (or 15 ug/L) at the surface and 0.042 mg/L (or 42 ug/L) at the bottom. In late July, the concentrations were 0.015 mg/L at the surface and 0.15 mg/L at the bottom in Basin 1 and 0.015 mg/L at the surface and 0.044 mg/L at the bottom in Basin 2. The September concentrations were 0.015 mg/L at the surface and 0.19 mg/L at the bottom in Basin 1 and 0.015 mg/L at the surface and 0.503 mg/L at the bottom in Basin 2. All readings are well within range for a healthy fishery. The shoreline areas ranged from 0.015 mg/L - 0.1 mg/L in June, all considered very low. As oxygen is not an issue here, this is expected.

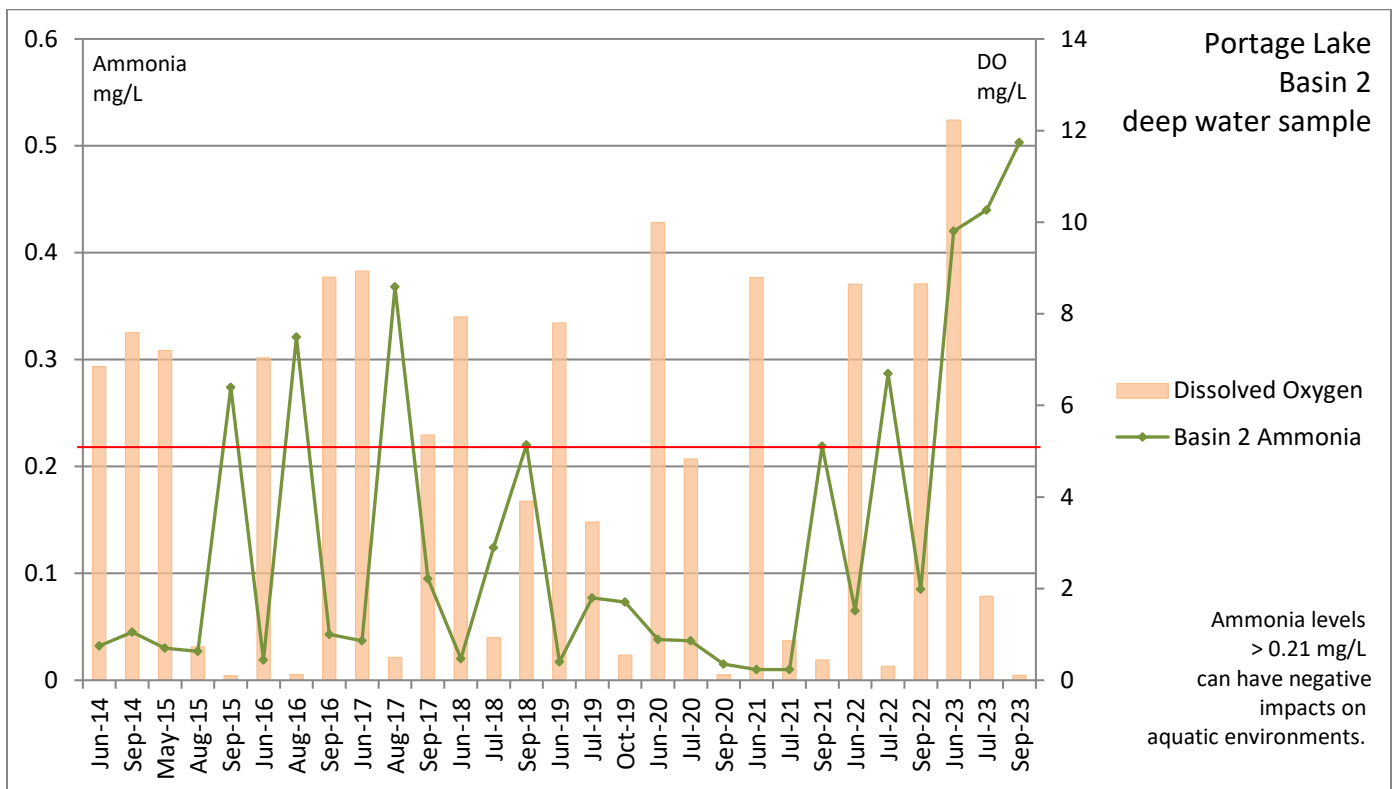


**Graph 23: Ammonia- Portage Lake Basin 1 (2014-2023)**



Graph 23 shows ammonia in Basin 1 is elevated when DO levels decline (i.e. in 2016); which is expected in anaerobic conditions. Although some thresholds have concentration spikes elevated on Portage Lake, the general review of the Ammonia trend is low. When spikes have been seen, internal loading of ammonia was likely.

**Graph 24: Ammonia- Portage Lake Basin 2 (2014-2023)**

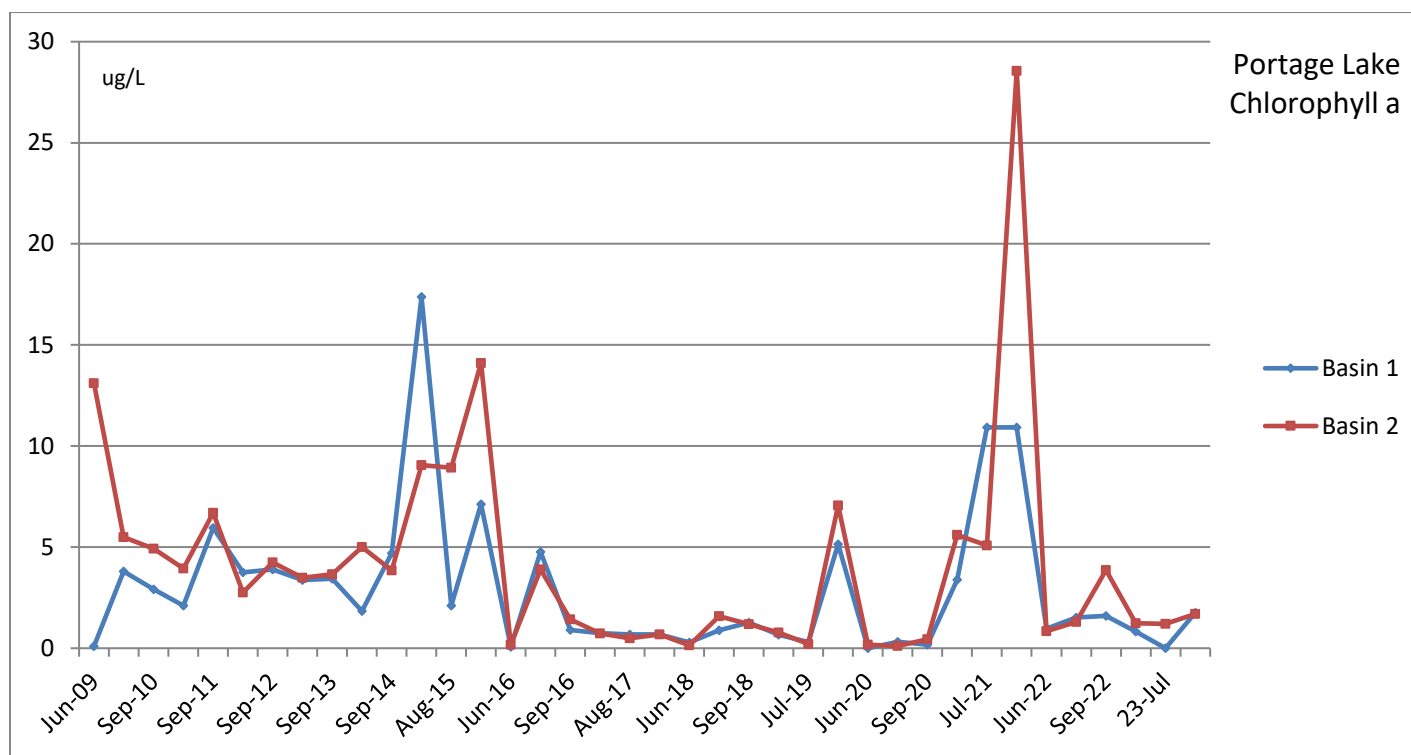


Basin 2 follows Basin 1 with spikes in Ammonia concentrations when DO levels drop.

## Chlorophyll

Chlorophyll measures the amount of plankton (green algae) in the water. Some plankton or algal growth is essential to support the growth of other organisms (e.g., fish) in the lake, but human activities and natural eutrophication often lead to excessive algal growth; thus, lower concentrations of chlorophyll are usually considered desirable. Chlorophyll concentrations in Portage Lake Deep Basins in June ranged from 0 ug/L to 1.57 µg/L indicating similar plankton populations than previous years. Shoreline samplings sites averaged 0.00 ug/L in June. Chlorophyll in the Deep Basins ranged from 0.0 ug/L - 1.216 ug/L in late July, while shoreline sites averaged 1.89 ug/L. In September, Chlorophyll ranged from 1.27 ug/L to 2.2 ug/L. The shoreline sites averaged 1.7 ug/L in September. A higher level, in shallow, warmer waters is common as the warmer water can be a breeding ground for plankton. Overall, chlorophyll levels have varied some in recent years, were much higher in 2021 and more consistent with historical data (and lower) in 2022 and 2023. Additional sampling is recommended and over time, sampling technology has improved as well.

**Graph 25: Chlorophyll a- Portage Lake Deep Basins**



Chlorophyll a sampling has declined over the last few years with some spikes, likely weather related and 2021 sampling showed large increases and returned to more consistent data in 2022 and 2023. Additional sampling is recommended.

## Algae and Zooplankton Composition

Algal composition testing was performed at both deep Basins as well as the shoreline testing sites in June, late July and September. The June testing showed the majority genera present included (presented as most abundant to least abundant); Cyanophyta (blue green algae): *Microcystis* sp., Bacillariophyta (diatoms): *Cyclotella* sp., *Asterionella* sp., *Fragilaria* sp., *Tabellaria* sp.; Chlorophyta (green algae): *Chlamydomonas* sp., *Scenedesmus* sp., *Spirogyra* sp., *Pediastrum* sp. The July sampling found Bacillariophyta (diatoms): *Fragilaria* sp., *Cyclotella* sp.; Chlorophyta (green algae): *Pediastrum* sp., *Chlorella* sp., *Gloeocystis* sp., *Ulothrix* sp.; Euglenophyta, specifically *Trachelomonas* sp.; Cyanophyta (blue green algae), specifically *Microcystis* sp., The September sampling found Cyanophyta (blue green algae), specifically *Microcystis* sp., *Gloeotrichia* sp., the most abundant species and genera of phytoplankton followed by Chlorophyta (green algae): *Pediastrum* sp., *Chlorella* sp.; Bacillariophyta

(diatoms): *Fragilaria sp.* Some blue green algae, including *Microcystis sp.*, can produce toxins. These toxins are normally released when the algae near the end of the life cycle and often occur for short phases during a growing season, often times towards the end of the season after the water temperatures and nutrient loading have reached a high. Further, blue green algae are not consumed by Zebra mussels, so if Zebra mussels are present in a lake ecosystem, it is likely to have lower green algae populations and higher blue green algae, as the Zebra Mussels will filter the green algae out of the water column and leave the blue green algae alone. The levels of blue green algae are not high enough to warrant a concern at this time. The blue green algae “scum” that forms on the lake surface when densities are extremely high should be avoided if that were to occur, but the densities in Portage Lake are not high enough to cause a bloom at this point.

The zooplankton communities were also identified while looking at the phytoplankton and numerous species of zooplankton were documented including; *Cladocera sp. (Daphnia)*., *Rotifer sp.*, *Brachiopoda sp.*, and *Copepods sp.* Diverse and present phytoplankton is required to have a healthy zooplankton community as the base of the food chain.

### **Fecal Indicator Bacteria (E. Coli)**

Fecal Indicator Bacteria (E. Coli) measurements count the number of live fecal indicator bacteria in the sample. These bacteria are considered reliable indicators of fecal contamination when they are found in a pond or lake; it is very likely that the water is being contaminated by animal feces. Contamination can potentially be derived from a number of sources, including failed septic systems, agriculture runoff, or waterfowl or wildlife droppings.

In the last decade, E.Coli monitoring has become a priority for the watershed in order to ensure healthy, clean water for the area’s residents and visitors. E.Coli data has been collected throughout the watershed by various entities including District 10 Heath Department, Onekama Village, Onekama Township and PLM Lake & Land Management. Between 2009 and 2023, over 400 composite samples have been collected around Portage Lake and its tributaries.

In 2023, the scope of the E.Coli monitoring included road end beaches and tributary streams by District Heath Department. A total of three samples at 10 sites were collected six times between June and August. Areas of concern were found in Schmeke Creek (next to fairgrounds) and in Stream #9 (M22 at Easy Street). These areas had elevated levels throughout much of the summer to justify a body contact advisory in those areas.

The majority of the sample sites in the Portage Lake watershed that have been monitored for E.Coli have had consistently low concentrations meaning that in the context of E.Coli, water quality is high and public health risk is low.

**Table 4: Portage Lake E.coli Testing, District 10 Health Department 2023**

**Portage Lake Surface Water Monitoring – 2023**

**E. coli Results: Colony\* forming units(cfu)/100ml (3 samples/site A,B,C)**

**District 10 Health Department**

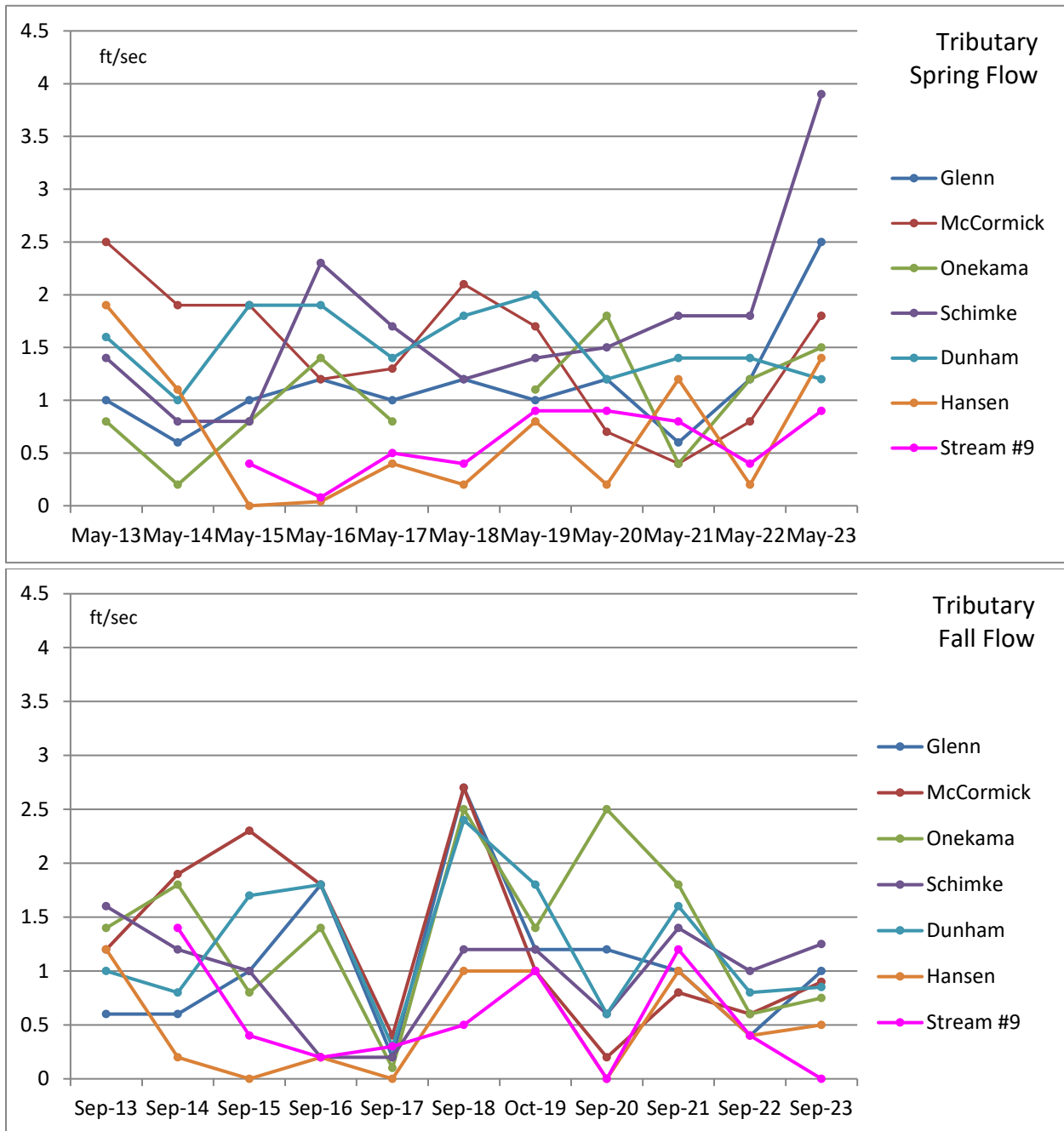
Location/Date	June 14	June 26	July 12	July 26	Aug 9	Aug 23
1. Portage Point Road (Hilltop)	A: <1.0 B: <1.0 C: 1.0	A: 24.1 B: 3.1 C: 13.2	A: <1 B: 3.0 C: 33.0	A: 39.3 B: 6.3 C: 11.0	A: 2.0 B: <1 C: <1	A: <1 B: 2.0 C: 1.0
2. Bayview (Batmore)	A: <1.0 B: 2.0 C: 1.0	A: <1.0 B: 5.2 C: <1.0	A: <1.0 B: <1.0 C: 1.0	A: 5.2 B: <1.0 C: 1.0	A: 1.0 B: <1 C: 1.0	A: 62.4 B: 38.3 C: 13.5
3. Ardmore Road (Public Access)	A: 11.0 B: 7.3 C: 56.5	A: 16.9 B: 4.1 C: 16	A: 2.0 B: <1.0 C: 3.1	A: 39.9 B: 25.3 C: 18.3	A: <1 B: <1 C: <1	A: 12.2 B: 10.8 C: 13.5
4. Portage Point Inn Beach	A: 2.0 B: 2.0 C: <1.0	A: 13.4 B: 12.1 C: 18.3	A: 3.1 B: 4.1 C: 2.0	A: 28.1 B: 35.5 C: 96.0	A: 4.1 B: 8.4 C: 2.0	A: 76.7 B: 68.3 C: 88.0
5. 3rd Street Public Access Portage Point	A: 2.0 B: 3.0 C: 1.0	A: 59.8 B: 118.7 C: 73.3	A: <1.0 B: <1.0 C: 1.0	A: 7.3 B: 9.8 C: 7.2	A: 3.1 B: 1.0 C: <1	A: 141.4 B: 178.5 C: 143.9
6. Shemkey Creek next to Fair Grounds	A: 178.2 B: 172.3 C: 178.2	A: 461.1 B: 410.6 C: 461.1	A: 325.5 B: 201.4 C: 224.7	A: 365.4 B: 298.7 C: 387.3	A: 204.6 B: 178.9 C: 172.3	A: 111.2 B: 86.2 C: 121.1
7. Stream 9 M-22 @ Easy Street	A: >2419.6 B: 67.0 C: 83.6	A: 135.4 B: 95.9 C: 84.2	A: 79.8 B: 90.9 C: 150.0	A: 461.1 B: 648.8 C: 488.4	A: >2419.6 B: >2419.6 C: 2419.6	A: 547.5 B: 727.0 C: 648.8
8. Portage Lake Covenant Bible Camp	A: 6.3 B: 6.3 C: 7.5	A: 7.5 B: 6.3 C: 8.5	A: 3.1 B: 2.0 C: 11.00	A: 14.6 B: 8.5 C: 8.6	A: 1.0 B: <1 C: 8.5	A: 6.3 B: 5.2 C: 4.1
9. Leonard Road Public Access	A: <1.0 B: 2.0 C: 2.0	A: 17.3 B: 10.9 C: 21.3	A: 2.0 B: 4.1 C: 3.1	A: 6.3 B: 3.1 C: 1.0	A: 1.0 B: <1 C: 8.5	A: 5.2 B: 11.0 C: 18.9
10. Morey Road Public Access	A: 42.0 B: 49.5 C: 55.6	A: 228.2 B: 178.5 C: 142.1	A: 6.3 B: 5.2 C: 5.2	A: 35.0 B: 20.3 C: 14.6	A: 24.3 B: 14.8 C: 19.9	A: 2.0 B: 5.2 C: 3.0

\*Live Colonies per 100ml sample. <300 colonies/100ml is considered the safe limit for swimming (calculated from geometric mean of 3 samples/site). As a reminder on interpreting the results, bacteria levels greater than 300 cfu / 100

### Tributary Flow and Phosphorus

Flow rate data was determined, using a digital flow meter, at the seven tributaries studied in May and in September. Flow ranged from 0.2 feet/second - 1.8 feet/second in the May sampling and from 0.4 feet/second - 1 feet/second in September. Schimke Creek was the fastest flowing in 2022. The rates of flow varied from each creek and the basic chemistry varied as well. Nutrients coming in from the creeks are a concern, as it is a transport from the watershed into Portage Lake. Total Phosphorus is graphed below along with flow to see how the flow and TP are connected.

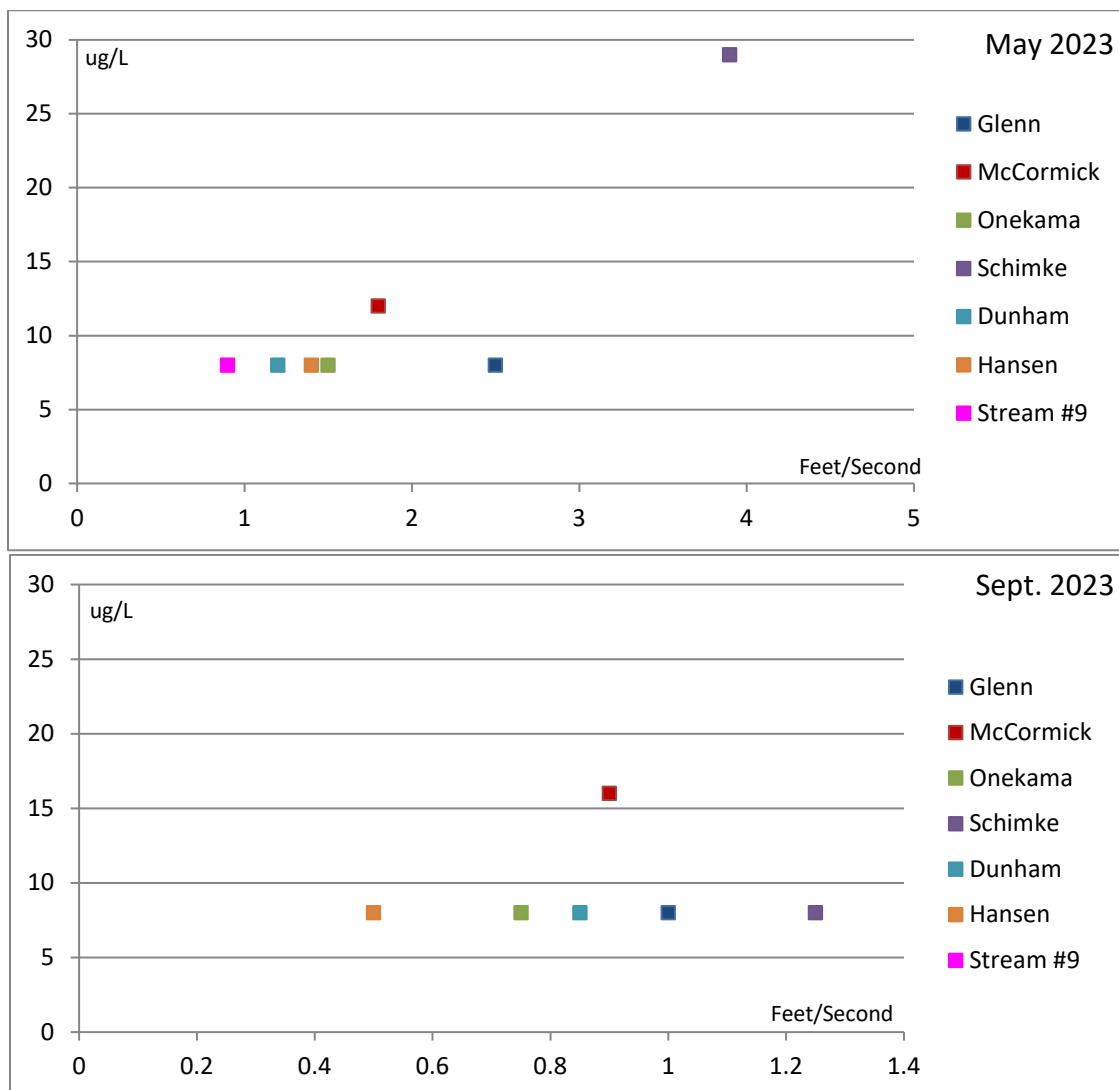
Graph 26 and 27: Tributary Flow Rates –May (top); September (bottom) 2013-2023



Historically, these graphs illustrate that there is a decline in flow rate at the end of the summer versus the beginning of the summer. Typically, higher flows in spring will increase nutrient inputs in the spring and they decrease in the fall. This is standardly due to snow melt and spring rain. Generally speaking, the flow in 2023 and 2022 had a higher range and overall higher average. This likely correlated with higher water levels in the watershed. Higher water levels in the watershed could be having impacts on other parameters including nutrient levels as well as plant growth.



**Graph 28 and 29: Tributary Flow Rates and Phosphorus (ug/L) comparisons – May 2023 (top) – September 2023 (bottom)**



In years past, these graphs have illustrated a correlation between flow and TP. The greater the flow, the higher the Total Phosphorus. (This correlation has historically been strong.) In 2021 and 2022, the TP concentrations were all very similar, down from recent years, regardless to flow. Spring 2023 results support previous correlations with higher the flow, the higher the input of TP into Portage Lake.

### Additional Tributary/Upstream testing

Tributary testing was expanded in 2016 to include testing four creeks upstream to determine if there were any point source locations determined or pinpointed. Determining any area of concern would allow future work to reduce nutrient loading into the lake be done. Using best management practices throughout the entire watershed, but especially on the creeks leading directly into the lake are essential. Determining if there is a location within the first few miles of the creek off of the lake that has elevated nutrient levels would allow future focus to be determined.

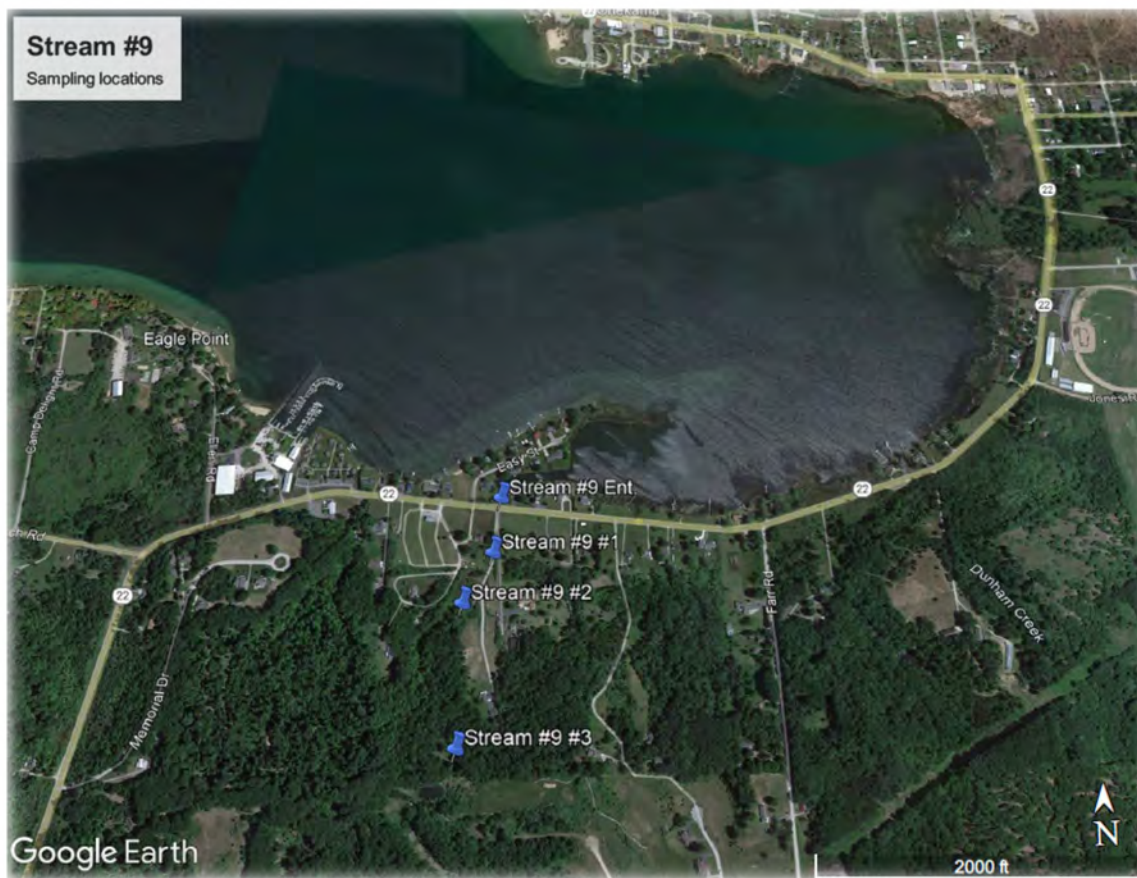
Based on historical data of nutrient levels from the tributaries, four creeks were selected to have additional testing done. Those creeks include: McCormick, Schimke, Hansen and Stream #9. During this test, each creek was also tested upstream at locations that were determined upon walking up the creek. Upon walking upstream, visual observations were made for any concerns including but not limited to drain tiles, erosions, buffers, invasive, flow issues, sources of nutrient inputs, etc. Based on observations

the following locations were selected as potential sources of nutrient inputs: culverts, wetlands, location of golf course, farming field, houses, roads, etc.

Of the data collected, most locations came up somewhat enriched, with the largest concern being Stream #9. Because Stream #9 was the largest concern in 2016, it was selected for upstream testing in 2017 and all the years since. The last few years have shown lower TP than prior testing, which is a positive sign.

The water depth and flow going into the lake in 2021- 2023 was too low for upstream sampling. Evaluating conditions in 2024 is recommended to determine if additional sampling is needed.

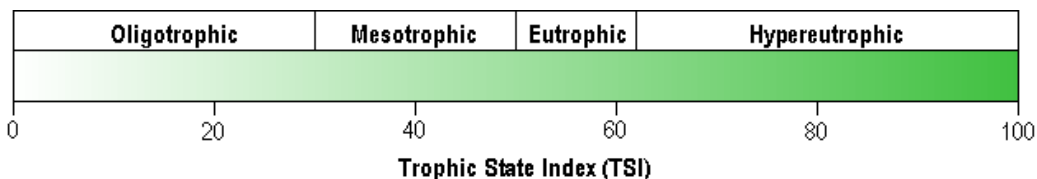
### Map 9: Portage Lake Stream #9 sampling locations



### Evaluation of Trophic Status

Carlson's Trophic State Index (TSI) is used to measure the trophic state of individual lakes.

Lakes are ranked from 1 to 100 based on Secchi disc depth, Total phosphorus concentrations and/or Chlorophyll a levels. Based on that ranking, the TSI is determined. This chart gives the approximate classification for each category.



Portage Lake's June data yielded values between 30 and 42, in 2023 (Table 52). In general, these values rate Portage Lake as mesotrophic. Characteristics associated with oligotrophic to meso- oligotrophic lakes are low nutrient levels, clear water and low productivity. High dissolved oxygen levels typically occur and survival of cold water fish is possible. Mesotrophic lakes tend to have moderate nutrient levels,

clear water and moderate productivity. Rooted plants are abundant and the lake can still support a cold water fishery. As the picture to the right shows, eutrophic lakes (not Portage Lake at this time, but given for comparison) have high nutrient levels, turbid water, algae blooms are likely and sometimes severe. Plants are abundant and dissolved oxygen is often depleted from bottom waters, restricting fish populations to warm water species.

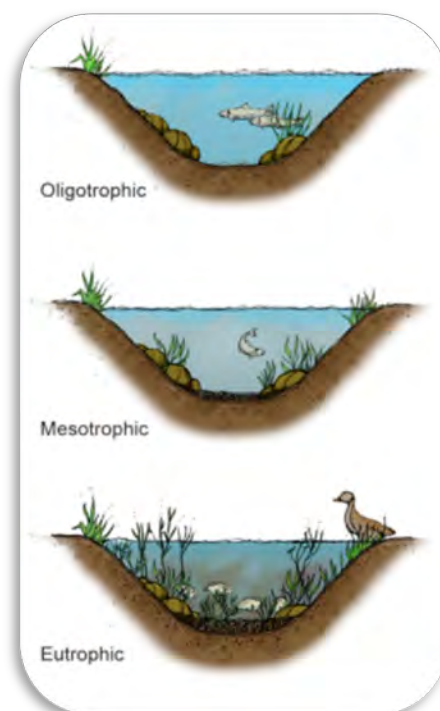


Photo curiosity Progressive AE

**Table 5: 2023 Trophic State Index (TSI) Values**

Site	Secchi Depth	Total Phosphorus	Chlorophyll a
Basin 1 - June	39	30	30
Basin 2 - June	42	30	30
Basin 1- July	38	30	30
Basin 2- July	38	30	30
Basin 1 - Sept.	40	30	30
Basin 2 - Sept.	38	30	30

## 2023 Water Quality Concerns/Recommendations

Current water quality problems in Portage Lake can result from nutrient loading from the watershed and nutrient rich bottom sediments in the lake. Please note that the overall nutrient levels in Portage Lake are still relatively low compared to most Michigan waterbodies. Reductions in external nutrient loads may eventually reduce internally generated water quality problems, though improvements will require that dramatic reductions in external loading be sustained for long periods of time. Even if sufficient loading reductions are achieved, many years will be required before improvement is evident. In order to manage external nutrient inputs, it would be necessary to develop and implement a watershed management plan for the Portage Lake watershed. Watershed activities and public awareness using good management practices in the watershed will have long term positive improvements in the lake. This could be one cause of the decrease in nutrient levels in the lake.

## Management Recommendations for 2024

Management options are dependent on many factors, including but not limited to, species abundance (density), species richness, species location and many lake characteristics. Whenever an exotic species is found within an aquatic environment, action needs to be taken to prevent long term ecological damage as well as recreational and aesthetic loss that will take place.

## Submersed Aquatic Plants

The 2024 aquatic plant management program should detect and manage/treat any areas where Eurasian watermilfoil or hybrid watermilfoil and Starry stonewort are present in addition to any other invasive, exotic species.

As part of the plan, alternative options will be presented, when appropriate and deemed necessary, to review various options available for each nonnative plant of concern. Regarding European frog bit, physical (hand) removal will be a primary control avenue if areas are small, contained and pending labor support available for this undertaking.

As part of this program, the Invasive Species Committee would prefer to avoid using Copper based products as part of their program whenever possible. Before Copper based products are used, specific review of the species, acreage and management goals needs to be reviewed.

## Emergent Vegetation Management

Purple loosestrife and Phragmites should continue to be addressed around the perimeter of the lake to prevent the further spread of these exotic species. Continuing biological control of Purple Loosestrife with beetles, if available, is recommended to continue. In addition, any other invasive terrestrial plants including but not limited to Japanese knotweed, honey suckle, garlic mustard and autumn olive should be targeted for control.

## Monitoring

Aquatic vegetation and water quality should continue to be monitored to document the condition of the lake and to provide warning of any changes in the condition of the lake that need to be addressed by additional lake management activities.

## Proposed Budget

The following budget is proposed based on previous requirement on Portage Lake and the budget is limited to the management and treatment of Portage Lake. If additional costs are required in the maintenance of the SAD or from outside factors, they may not be included in this budget. Note: Hybrid milfoil genetic research is evolving and as such, application rates, product choices and/or tools may adjust over time impacting the cost/acre. The budget may have to be adjusted long term to account for genetically changing plants.

**Table 6: Proposed 2024 Budget Portage Lake**

Proposed/ Estimated Budget*	2024
Nonnative Emergent Control	\$1,500
Nonnative Weed Control	\$49,500
Permit	\$1,600
Lake Management	\$25,000
Contingency Funds	\$6,000
Total	\$83,600
<i>*updated to include expanded professional services</i>	

## The Recommended Management Schedule for 2024:

- A spring and fall vegetation survey (to evaluate conditions in the lake).
- Exotic plant management/treatment, as required
- Pre and post implementation surveys as required, in addition to a mid-summer survey
- Extensive water quality monitoring throughout season
- Late summer/fall Phragmites Control
- Community Education/outreach activities
- Fish Study follow up, if deemed necessary
- Cold season sampling (optional)
- Early Detection Rapid Response (EDRR) to new infestations

## Addendum 1 Product Explanation guide

### Aquathol K

Active ingredient- Dipotassium Endothall 40.3%

Use- Contact herbicide

Half-life- 5-8days

Target Species- Curlyleaf pondweed

Mode of action- Respiration is inhibited, during which, oxygen consumption is also inhibited.

Effects are greater in the dark, due to the fact that the results are non-photosynthesis-based.

### Flumioxazin

Active ingredient- Flumioxazin 51%

Trade names- Clipper, Propeller

Use-systemic herbicide

Half-life- >1-4 days pending pH

Target Species- Eurasian watermilfoil

Mode of action- Inhibitor of the enzyme protoporphyrinogen oxidase. This enzyme is part of the chlorophyll biosynthesis pathway and its inhibition leads to a loss of chlorophyll and carotenoids and irreversible damage to the cell membrane function and structure.

### ProcellaCOR

Active ingredient- Florpyrauxifen-benzyl 2.7%

Use- Systemic herbicide

Half-life- 1-6days (pH and temp. dependent)

Target Species- Eurasian watermilfoil, Curlyleaf pondweed, some pondweeds

Mode of action- Indoleacetic acid (IAA) is the main auxin in plants, regulating growth and development which is triggered to disrupt growth by binding to it. Roots are most sensitive to fluctuations in IAA level. This product mimics the plant growth hormone auxin that causes excessive elongation of plant cells that ultimately kills the plant.

### Navigate (2,4-d)

Active ingredient- 2,4-dichlorophenoxy acetic acid 27.6%

Use- Systemic herbicide

Half-life- 15days

Target Species- Eurasian watermilfoil

Mode of action- Acts as a plant growth hormone (auxin) which stimulates rapid excessive growth which interferes with cell division, food utilization, and other vital processes of the plant. Systemic effects are more specific to dicots as opposed to monocots.

### Renovate 3

Active ingredient- Triclopyr 44.4%

Use- Systemic herbicide

Half-life- 1 day with light

Target Species- Eurasian watermilfoil

Mode of action- Acts as a plant growth hormone (auxin) which stimulates rapid excessive growth which interferes with cell division, food utilization, and other vital processes of the plant. Systemic effects are more specific to dicots as opposed to monocots.

### Renovate OTF

Active ingredient- Triclopyr 14.0%

Use- Systemic herbicide



Half-life- 1 day with light

Target Species- Eurasian watermilfoil

Mode of action- Acts as a plant growth hormone (auxin) which stimulates rapid excessive growth which interferes with cell division, food utilization, and other vital processes of the plant. Systemic effects are more specific to dicots as opposed to monocots.

## SeClear G

Active ingredient- Copper Sulfate Pentahydrate 58.9%

Use- Algaecide

Target Species- Starry stonewort

Mode of action- Copper is regulated by plants/algae because it is an essential mineral. Too much copper can be toxic to plants as it inhibits photosynthesis. Copper naturally occurs in the environment and is highly soluble in water and it can bind with sediments.

## Sculpin G

Active ingredient- 2,4-dichlorophenoxyacetic acid, dimethylamine salt 20%

Use- Systemic herbicide

Half-life- 14days

Target Species- Eurasian watermilfoil

Mode of action- Acts as a plant growth hormone (auxin) which stimulates rapid excessive growth which interferes with cell division, food utilization, and other vital processes of the plant. Systemic effects are more specific to dicots as opposed to monocots.

## Tribune

Active ingredient- Diquat dibromide 37.3%

Use- Contact herbicide

Half-life- 48hours

Target Species- Eurasian watermilfoil, Curlyleaf pondweed

Mode of action- Reduction of a free radical through the natural processes of respiration and photosynthesis. The salts formed can bond and release with electrons in the plant over and over again, virtually "short circuiting" the plants ability to use photosynthesis.

## Addendum 2 Product Terminology

**Active ingredient:** An active ingredient are the chemicals in the pesticide that kills, controls or repels pests. Often, the active ingredient makes up a small portion of the whole product.

**Inert ingredient:** An inert or other ingredient are combined with active ingredients to make a pesticide product. Inert ingredients are used to stabilize the product, help it stick, sink, dissolve, improve ease of application, drift among other factors.

**Half-life:** The half-life of an herbicide is the length of time it takes for 50% of the herbicide to break down to secondary compounds. "The half-life can help estimate whether or not a pesticide tends to build up in the environment. Pesticides with shorter half-lives tend to build up less because they are much less likely to persist in the environment." National Pesticide Information Center

**Systemic herbicide:** Systemic herbicides are absorbed and transported through the plant's vascular system, killing the entire plant.

**Contact herbicide:** Contact herbicides kill the part of the plant in contact with the chemical but the roots may survive.

**Selective herbicide:** A selective herbicide is formulated to control specific weeds. It is a material that is toxic to some plant species but not all.

## Addendum 3A Portage Lake Product Use Overview

**Table 7: Submersed Plant Control Program Product Use Overview**

Year	Date	Product	Rate lbs/Acre	Acres	Total Acres	Total Product	% active ingredient	Total active ingredient used
<b>2023</b>	15-Jun	Flumioxazin	200ppb	6.35	6.35	20lbs	51%	10.2lbs
<b>2022</b>	6-Jun	Flumioxazin	200ppb	6.5	53.9	20lbs	51%	10.2lbs
	27-Jul	Flumioxazin	200ppb	0.2		0.5lbs	51%	0.25lbs
	7-Sep	Flumioxazin	200ppb	0.2		0.5lbs	51%	0.25lbs
		SeClear G	50lbs	2		100lbs	58.90%	58.9lbs
		ProcellaCOR/Diquat	6pdu/1gal	45		270pdu/45g	2.7%/37.3%	23.10ou/16.78gal
<b>2021</b>	17-Jun	Aquathal K	1gal	6.5	50.65	6.5gal	40.30%	2.6195gal
	12-Aug	ProcellaCOR/Diquat	4pdu/1gal	1.5		6pdu/1.5g	2.7%/37.3%	0.51ou/0.55gal
		ProcellaCOR/Diquat	5pdu/1gal	16		80pdu/16g	2.7%/37.3%	6.84ou/5.96gal
		Sculpin G	300lbs	22.4		6720lbs	20%	1344lbs
		SeClear G	50lbs	4.25		212.5lbs	58.90%	125.16lbs
<b>2020</b>	17-Jun	Clipper	200ppb	6.3	82.1	19.8lbs	51%	10lbs
	2-Aug	ProcellaCOR/Ren3	4pdu/3.5g	13.5		47.25pdu/54g	22.7%/44.4%	4ou/23.9gal
		Sculpin G	240lbs	4.15		1000lbs	20%	200lbs
		ProcellaCOR/Diquat	4pdu/1gal	19.65		78.6pdu/19.65g	2.7%/37.3%	6.7ou/7.3gal
		ProcellaCOR	9pdu	30.5		247.5pdu	2.70%	21.18ou
		SeClear G	50lbs	8		400lbs	58.90%	235.6lbs
<b>2019</b>	17-Jun	Clipper	200ppb	6.3	60.25	19.8lbs	51%	8.5lbs
	15-Aug	Renovate 3	4g	4.5		18gal	44.40%	7.99gal
		Renovate OTF	240lbs	25.25		6312.5lbs	14%	883.75lbs
		Sculpin G	240lbs	20		4800lbs	20%	960lbs
		ProcellaCOR	11pdu	4.2		45.6pdu	2.70%	3.9ou
<b>2018</b>	17-Jun	Clipper	200ppb	1.58	51.08	5lbs	51%	2.55lbs
	15-Aug	Renovate 3	4gal	4.5		18gal	44.40%	7.99gal
		Renovate OTF	200ppb	8		1600lbs	14%	224lbs
		ProcellaCOR	11.43pdu	3.5		40.4pdu	2.70%	3.45ou
		Sculpin G	240lbs	33.5		8040lbs	20%	1608lbs
<b>2017</b>	14-Jun	Clipper	200ppb	1.58	67.68	5.53lbs	51%	2.82lbs
	15-Aug	Renovate OTF	240lbs	13		3120lbs	14%	436.8lbs
		Renovate OTF	200lbs	14		2800lbs	14%	392lbs
		Renovate 3	4gal	5.6		22.4gal	44.40%	9.94gal
		Sculpin G	240lbs	29.5		7080lbs	20%	1416lbs
		Sculpin G	200lbs	4		800lbs	20%	160lbs
<b>2016</b>	27-Jun	Clipper	200ppb	1.25	21.35	3.9lbs	51%	1.98lbs
	2-Aug	Renovate OTF	200lbs	6.6		1320lbs	14%	184.8lbs
		Renovate OTF	240lbs	3.5		840lbs	14%	117.6lbs
	3-Aug	Renovate OTF	200lbs	3		600lbs	14%	8.4lbs
		Renovate 3	4gals	2		8gal	44.40%	3.55gal
		Sculpin G	240lbs	5		1200lbs	20%	240lbs

<b>2015</b>	19-Jun	Clipper	200ppb	1.25	79.35	4lbs	51%	2.04lbs
	28-Jul	Renovate OTF	200lbs	4		800lbs	14%	112lbs
	28-Jul	Renovate OTF	240lbs	3.8		920lbs	14%	128.8lbs
	28-Jul	Sculpin G	200lbs	4		800lbs	20%	160lbs
	28-Jul	Sculpin G	240lbs	66.3		15920lbs	20%	3184lbs
<b>2014</b>	26-Jun	Renovate OTF	200lbs	1.5	176.05	300lbs	14%	42lbs
	29-Jul	Renovate OTF	200lbs	0.8		160lbs	14%	22.4lbs
		Renovate LZR Max	120lbs	95		11360lbs	18%	2044.8lbs
		Sculpin G	200lbs	10		2000lbs	20%	400lbs
		Clipper	200ppb	1.25		4lbs	51%	2lbs
	8-Sep	Sculpin G	160lbs	23		3680lbs	20%	736lbs
		Sculpin G	200lbs	12.5		2500lbs	20%	500lbs
		Sculpin G	240lbs	6		1440lbs	20%	288lbs
		Renovate LZR Max	160lbs	26		4160lbs	18%	748.8lbs
<b>Year</b>	<b>Date</b>	<b>Product</b>	<b>Rate lbs/Acre</b>	<b>Acres</b>	<b>Total Acres</b>	<b>Total Product</b>	<b>% active ingredient</b>	<b>Total active ingredient used</b>
<b>2013</b>	24,27 - Jun	Renovate OTF	160lbs	5	129.75	800lbs	14%	112lbs
		Renovate Max G	160lbs	39		6240lbs	18%	1123.2lbs
		Sculpin G	160lbs	74.5		11920lbs	20%	2384lbs
	8-Aug	Sculpin G	160lbs	10		1600lbs	20%	320lbs
		Clipper	200ppb	1.25		4lbs	51%	2.04lbs
<b>2012</b>	9-Jul	Renovate OTF	120lbs	10	145	1200lbs	14%	168lbs
		Renovate Max G	160lbs	55		8800lbs	18%	1584lbs
	24-Jul	Renovate OTF	120lbs	5		600lbs	14%	84lbs
		Renovate Max G	120lbs	40		4800lbs	18%	864lbs
		Sculpin G (2,4-D)	160lbs	35		5600lbs	20%	1120lbs
<b>2011</b>	27-Jul	Renovate OTF	120lbs	22	22	2640lbs	14%	369.6lbs
<b>2010</b>	29-Jun	Renovate OTF	120lbs	5	86	600lbs	14%	84lbs
		Navigate 2,4-D	100lbs	17		1700lbs	27.60%	469.2lbs
	27-Sep	Renovate OTF	120lbs	14		1680lbs	14%	235.2lbs
		Navigate 2,4-D	120lbs	50		6000lbs	27.60%	1656lbs
<b>2009</b>	15-Sep	Renovate OTF	120lbs	~41.5	161.5	5000lbs	14%	700lbs
		Navigate 2,4-D	100lbs	120		12000lbs	27.60%	3312lbs
<b>Total</b>					<b>1193.01</b>			

## Addendum 3B Portage Lake Treatment Cost Overview

**Table 8: Portage Lake Treatment Cost Overview**

Year	Date	Product	Price	Total Price
<b>2023</b>	15-Jun	Flumioxazin	\$3900.00	\$3,900.00
<b>2022</b>	6-Jun	Flumioxazin	\$3,298.75	
	27-Jul	Flumioxazin	\$0.00	
	7-Sep	Flumioxazin	\$650.00	
		SeClear G	\$600.00	
		ProcellaCOR/Diquat	\$34,650.00	\$39,198.75
<b>2021</b>	17-Jun	Aquathal K	\$1,072.50	
	12-Aug	ProcellaCOR/Diquat	\$862.50	
		ProcellaCOR/Diquat	\$10,800.00	

		Sculpin G	\$18,480.00	
		SeClear G	\$1,275.00	\$32,490.00
<b>2020</b>	17-Jun	Clipper	\$4,000.35	
	2-Aug	ProcellaCOR/Ren3	\$9,450.00	
		Sculpin G	\$2,739.00	
		ProcellaCOR/Diquat	\$11,102.25	
		ProcellaCOR	\$27,450.00	
		SeClear G	\$2,400.00	\$57,141.60
<b>2019</b>	17-Jun	Clipper	\$4,000.50	
	15-Aug	Renovate 3	\$1,620.00	
		Renovate OTF	\$22,472.50	
		Sculpin G	\$13,200.00	
		ProcellaCOR	\$5,700.00	\$46,993.00
<b>2018</b>	17-Jun	Clipper	\$1,003.50	
	15-Aug	Renovate 3	\$1,620.00	
		Renovate OTF	\$5,932.80	
		ProcellaCOR	\$6,000.00	
		Sculpin G	\$22,110.00	\$36,666.30
<b>2017</b>	14-Jun	Clipper	\$1,003.30	
	15-Aug	Renovate OTF	\$11,570.00	
		Renovate OTF	\$10,383.24	
		Renovate 3	\$2,016.00	
		Sculpin G	\$19,470.00	
		Sculpin G	\$2,200.00	\$46,642.54
<b>2016</b>	27-Jun	Clipper	\$793.75	
	2-Aug	Renovate OTF	\$4,894.96	
		Renovate OTF	\$3,115.00	
	3-Aug	Renovate OTF	\$2,224.98	
		Renovate 3	\$720.00	
		Sculpin G	\$3,200.00	\$14,948.69
<b>2015</b>	19-Jun	Clipper	\$768.75	
	28-Jul	Renovate OTF	\$2,933.32	
	28-Jul	Renovate OTF	\$3,344.00	
	28-Jul	Sculpin G	\$2,100.00	
	28-Jul	Sculpin G	\$41,769.00	\$50,915.07
<b>2014</b>	26-Jun	Renovate OTF	\$1,031.25	
	29-Jul	Renovate OTF	\$550.00	
		Renovate LZR Max	\$47,500.00	
		Sculpin G	\$5,187.50	
		Clipper	\$750.00	
	8-Sep	Sculpin G	\$0.00	
		Sculpin G	\$6,484.38	
		Sculpin G	\$3,735.00	
		Renovate LZR Max	\$0.00	\$65,238.13
<b>2013</b>	24,27 -Jun	Renovate OTF	\$2,800.00	
		Renovate Max G	\$19,500.00	
		Sculpin G	\$32,258.50	
	8-Aug	Sculpin G	\$4,330.00	
		Clipper	\$812.50	\$59,701.00
<b>2012</b>	9-Jul	Renovate OTF	\$4,400.00	



		Renovate Max G	\$27,500.00	
	24-Jul	Renovate OTF	\$2,200.00	
		Renovate Max G	\$15,000.00	
		Sculpin G (2,4-D)	\$15,155.00	\$64,255.00
<b>2011</b>	27-Jul	Renovate OTF	\$9,680.00	\$9,680.00
<b>2010</b>	29-Jun	Renovate OTF	\$2,200.00	
		Navigate 2,4-D	\$5,780.00	
	27-Sep	Renovate OTF	\$6,160.00	
		Navigate 2,4-D	\$19,750.00	\$33,890.00
<b>2009</b>	15-Sep	Renovate OTF	\$18,260.00	
		Navigate 2,4-D	\$40,800.00	\$59,060.00
<b>Total Price</b>				<b>\$620,720.08</b>

## Addendum 4 Portage Lake Water Quality Data

**Table 9: Tributary Water Quality Portage Lake -2023**

5/2/2023 Part Sun	Temp (F)	D.O. (mg/L)	Cond. (uS/cm)	TDS (ug/L)	pH (S.U.)	TP (ug/L)	ALK (mg/L)	Nitrate (ug/L)	Flow (Ft/sec)
Glenn	45.5	11.12	379.9	247	7.5	8	196	1300	2.5
McCormick	44.6	10.89	351	233	7.45	12	187	920	1.8
Onekama*	44.78	11.39	354.6	230	7.45	8	182	1190	1.5
Schimke	42.44	11.56	289.1	188	7.51	29	130	890	3.9
Dunham	44.06	11.78	338.6	220	7.47	8	169	790	1.2
Hansen	43.34	11.07	374.5	243	7.48	8	191	770	1.4
Stream #9	44.6	11.48	263.3	171	7.46	8	135	530	0.9
9/20/2023	Temp (F)	D.O. (mg/L)	Cond. (uS/cm)	TDS (ug/L)	pH (S.U.)	TP (ug/L)	ALK (mg/L)	Nitrate (ug/L)	Flow (Ft/sec)
Glenn	51.674	11.16	293	261	8.15	8	185	1430	1
McCormick	52.466	10.06	290	255	8.16	16	202	950	0.9
Onekama	52.268	11.11	283	249	8.3	8	193	1380	0.75
Schimke	53.69	10.97	287	249	8.34	8	197	1090	1.25
Dunham	52.25	11.3	371	241	8.16	8	192	850	0.85
Hansen	54.878	10.2	307	261	8.05	8	208	1060	0.5
Stream #9	56.408	11.11	193	125	8.06	202	196	230	0

**Table 9: Storm Drain Sampling Portage Lake -2023**

May 2, 2023	Temp (F)	D.O. (mg/L)	Cond. (uS/cm)	TDS (mg/L)	pH (S.U)	TP (ug/L)	Nitrate (ug/L)	Flow (Ft/sec)	Weather Rain, 35 degrees
#2 Zosel Park	45.68	10.18	437.6	284	7.43	8	640	0.4	
#5 Fourth St	48.56	7.85	486.8	317	7.37	8	400	1.1	
#6 Third St	44.06	10.85	293.2	191	7.47	8	880	1.3	
#7 First St.	44.6	11.24	321	209	7.46	8	141	1.4	

**Table 10: Shoreline Sampling Portage Lake -2023**

Jun6 Secchi	Temp (F)	D.O. (mg/L)	Cond. (uS/cm)	TDS (ug/L)	pH (S.U.)	TP (ug/L)	ORP (mV)	Turb. (NTU)	TKN (mg/L)	Nitrate (ug/L)	ALK (mg/L)	Chl. A (ug/L)
Cove- 2'	68.9	8.09	309.4	201	8.29	8	88	1.48	2.16	230	132	1.07
Inn- 13'	67.28	10.09	296.3	193	8.68	8	83.8	0.82	2.09	230	126	1.5
#3B- 4'	69.62	11.09	294.1	191	8.7	8	122.7	0.92	2	230	136	2.08
Jul 27 Secchi	Temp (F)	D.O. (mg/L)	Cond. (uS/cm)	TDS (ug/L)	pH (S.U.)	TP (ug/L)	ORP (mV)	Turb. (NTU)	TKN (mg/L)	Nitrate (ug/L)	ALK (mg/L)	Chl. A (ug/L)
Cove-6'	75.02	7.45	281	183	8.69	8	70.5	1.11	2.75	230	75.02	0
Inn-7'	74.48	9.02	283	184	8.66	8	74.9	0.38	2.25	230	74.48	0
#3B- 5'	75.2	9.41	261	170	8.76	8	69.5	0.5	3.61	230	75.2	0
Sep20 Secchi	Temp (F)	D.O. (mg/L)	Conduct- ivity (uS/cm)	TDS (ug/L)	pH (S.U.)	TP (ug/L)	ORP (mV)	Turb. (NTU)	TKN (mg/L)	Nitrate (ug/L)	ALK (mg/L)	Chlor. A (ug/L)
Cove-4'	64.76	9.65	282	183	8.63	8	73.9	0.74	3.26	230	109	1.72
Inn- 8'	64.76	9.81	277	181	8.74	8	73.9	0.78	3.24	230	108	1.6
#3B- 4'	63.68	10.35	304	198	8.66	8	77.7	0.79	1.85	230	135	1.7

In 2019, samplings were moved to new shoreline sites. 3B remained the same standard site 3B, but 3A was moved to the small cove and 3D was moved to Portage Point Inn.

**Table 11: Deep Hole Basin 1 Portage Lake –2023**

(Secchi Disc: June 14.5', July 15', Sept.13')

Basin 1 6/7/23	Temp (F)	D.O. (mg/L)	Cond. (uS/cm)	TDS (ug/L)	pH (S.U.)	TP (ug/L)	ORP (mV)	Turb. (NTU)	TKN (mg/L)	Nitrate (ug/L)	Amm. (mg/L)	ALK (mg/L)	Chl. A (ug/L)
s.	67.64	10.01	296.8	193	8.68	8	82.4	0.71	1.97	230	15	124	1.39
10'	66.74	10.1	296.4	193	8.68	-	91.2	0.66	-	-	-	-	-
20'	66.56	10.15	296.1	192	8.68	-	95.1	0.74	-	-	-	-	-
30'	56.12	12.3	287.3	187	8.58	8	110.4	1.00	3.62	500	25	118	1.11
40'	52.16	12.76	283.2	184	8.52	-	117.2	0.52	-	-	-	-	-
50'	51.08	12.65	283.8	184	8.45	-	125	0.51	-	-	-	-	-
60'	50.54	12.73	285.3	185	8.5	8	126.2	0.69	2.12	260	42	126	0
Basin1 7/27/23	Temp (F)	D.O. (mg/L)	Cond. (uS/cm)	TDS (ug/L)	pH (S.U.)	TP (ug/L)	ORP (mV)	Turb. (NTU)	TKN (mg/L)	Nitrate (ug/L)	Amm. (mg/L)	ALK (mg/L)	Chl. A (ug/L)
s.	75.02	9.1	284.3	185	8.66	8	73	0.45	1.67	230	15	115	0
10'	74.3	9.25	284	185	8.65	-	73.5	0.5	-	-	-	-	-
20'	73.94	9.1	285.3	1585	8.56	-	76.9	0.5	-	-	-	-	-
30'	56.84	13.15	287.6	184	8.57	8	84.1	0.57	1.68	400	15	112	0
40'	51.8	12.88	285.3	186	8.52	-	91.3	0.75	-	-	-	-	-
50'	50.9	10.22	294.1	191	8.13	-	100.9	1.05	-	-	-	-	-
60'	50.72	8.13	298.4	194	7.92	8	79.4	1.01	1.69	230	15	114	0
Basin1 9/20/23	Temp (F)	D.O. (mg/L)	Cond. (uS/cm)	TDS (ug/L)	pH (S.U.)	TP (ug/L)	ORP (mV)	Turb. (NTU)	TKN (mg/L)	Nitrate (ug/L)	Amm. (mg/L)	ALK (mg/L)	Chl. A (ug/L)
s.	64.76	10	277.8	181	8.74	8	73.9	0.82	1.75	230	15	129	2.2
10'	64.58	10.04	277.9	181	8.72	-	76.6	0.72	-	-	-	-	-
20'	55.4	10.62	284.5	185	8.44	-	87.6	0.54	-	-	-	-	-
30'	51.8	8.14	291.6	189	8.01	8	100.9	1.29	1.81	290	77	124	1.58
40'	50.36	7.91	290.2	189	7.75	-	115.9	1.39	-	-	-	-	-
50'	50.18	5.81	294.7	192	7.55	-	121.2	2.74	-	-	-	-	-
60'	50.18	1.83	292.4	190	7.75	8	38	2.07	1.85	280	197	110	1.52

**Table 12: Deep Hole Basin 2 Portage Lake –2023**

(Secchi Disc: June 11.5', July 15', Sept. 15')

Basin 2 6/7/23	Temp (F)	D.O. (mg/L)	Cond. (uS/cm)	TDS (ug/L)	pH (S.U.)	TP (ug/L)	ORP (mV)	Turb. (NTU)	TKN (mg/L)	Nitrate (ug/L)	Amm. (mg/L)	ALK (mg/L)	Chl. A (ug/L)
s.	68.18	9.98	297	193	8.66	8	61.9	0.75	2.08	230	15	121	1.09
10'	68.18	10.02	297	193	8.66	-	62.8	0.75	-	-	-	-	-
20'	61.7	11.82	291.1	189	8.63	-	67	0.76	-	-	-	-	-
30'	59.72	12.19	290.4	189	8.61	8	69.9	0.7	1.76	240	62	125	1.57
40'	57.2	12.42	289.5	188	8.6	-	73	0.68	-	-	-	-	-
50'	55.76	12.35	290.5	189	8.57	-	75.7	0.67	-	-	-	-	-
60'	55.22	12.23	292	190	8.56	8	77.6	0.58	1.73	250	42	124	1.04
Basin2 7/27/23	Temp (F)	D.O. (mg/L)	Cond. (uS/cm)	TDS (ug/L)	pH (S.U.)	TP (ug/L)	ORP (mV)	Turb. (NTU)	TKN (mg/L)	Nitrate (ug/L)	Amm. (mg/L)	ALK (mg/L)	Chl. A (ug/L)
s.	75.02	9.38	282.6	184	8.6	8	75.3	0.62	2.46	230	15	119	0
10'	75.02	9.39	282.7	184	8.61	-	77.8	0.57	-	-	-	-	-
20'	71.42	10.25	285.6	186	8.51	-	83.1	0.56	-	-	-	-	-
30'	59.72	12.2	290.9	189	8.57	8	88.1	0.65	1.9	230	15	111	0.929
40'	55.04	6.14	306.9	199	7.71	-	113.3	1.17	-	-	-	-	-
50'	54.32	2.2	315.1	205	7.41	-	121	1.77	-	-	-	-	-
60'	54.14	1.83	315.8	205	7.41	8	69.9	1.5	1.86	230	44	118	1.21
Basin2 9/20/23	Temp (F)	D.O. (mg/L)	Cond. (uS/cm)	TDS (ug/L)	pH (S.U.)	TP (ug/L)	ORP (mV)	Turb. (NTU)	TKN (mg/L)	Nitrate (ug/L)	Amm. (mg/L)	ALK (mg/L)	Chl. A (ug/L)
s.	64.58	9.81	279.1	181	8.66	8	90.2	0.86	2.59	230	15	105	1.27
10'	64.58	9.82	279.1	181	8.66	-	93.6	0.93	-	-	-	-	-
20'	64.58	9.76	279.2	182	8.65	-	98.1	0.87	-	-	-	-	-
30'	58.64	6.37	295.4	192	7.8	8	123.2	0.87	2.06	230	17	101	1.72
40'	56.12	0.41	318	207	7.32	-	73	0.097	-	-	-	-	-
50'	55.58	0.15	321.5	209	7.32	-	74.1	2.05	-	-	-	-	-
60'	55.04	0.11	320.7	209	7.32	8	73.5	7.5	1.47	230	503	129	2.11